

Eastern Valley Way and Edinburgh Road

Option comparison

Option	LOS	
	AM Peak	PM Peak
Existing	D	C
Option A (each side of Edinburgh Road operates as separate phases)	F	F
Option B (leading right turn green arrow from Edinburgh Road East)	F	F
Option C (right turn bay)	D	C

Level of Service	Average delay per Vehicle (secs/veh)	Description
A	<14	Good operation
B	15-28	Good with acceptable delays and spare capacity
C	29-42	Satisfactory
D	43-56	Operating near capacity
E	57-70	At capacity; incidents will cause excessive delays
F	>70	Breakdown in flow, failure conditions

Option A

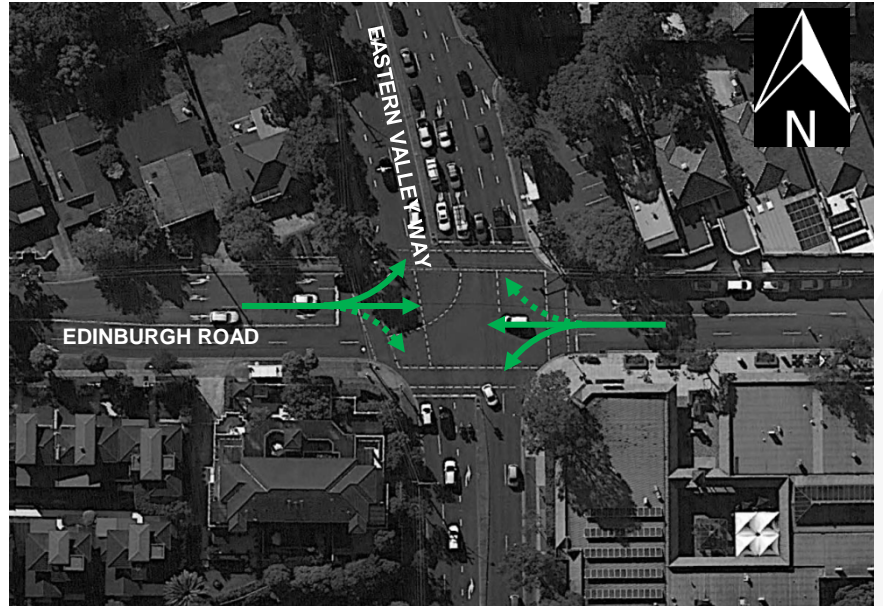
Each side of Edinburgh Road run as separate phases



Phase 1 → then → Phase 2

Option B

Leading right turn green arrow from Edinburgh Road (east)



Phase 1 → then → Phase 2

Option C

Right turn bay



Phase 1 → then → Phase 2

Option C

Right turn bay

