

## NEWSLETTER OF THE CASTLECRAG PROGRESS ASSOCIATION

No.28

MAY·JUNE 1983

### PRESIDENT'S REPORT

Con Saltis

The Executive Committee elected for 1983 proposes to work on the following projects:

- . Proposed re-building of Boatshed and Marina at Northbridge, which is being opposed by the Association.
- . Traffic speed problems in Edinburgh Road.
- . Construction of bus shelter in Edinburgh Road, at the bus terminus.
- . Extension of sewerage services in our area.
- . Examination of local environment issues and proposed building covenants.
- . Encouragement of Association participation by younger members of the community and by new residents.
- . Election of local alderman in the next Council elections.

Residents are invited to attend the next general meeting of the association.

### COUNCIL ELECTIONS

Con Saltis, President

The next council elections in the Municipality of Willoughby will be held on 24th September, 1983. The Town Clerk has advised that endorsed candidates shall be registered by not later than 19th August, 1983.

In past years, the Progress Associations of Castle Cove, Middle Cove and Castlecrag endorsed one candidate each and contested the election on a combined ticket.

Our present representative in Council, Alderman Eric Kaye, has indicated that he would like to represent Castlecrag again for the next three year term. Confirmation of his selection or selection of any other candidate wishing to contest this position, through the Castlecrag Progress Association, will take place at the Association's next general meeting to be held on 28th June, 1983.

---

NEXT MEETING OF CASTLECRAG PROGRESS ASSOCIATION WILL BE HELD ON  
TUESDAY 28th JUNE, 1983 AT 8 P.M. IN THE CASTLECRAG COMMUNITY CENTRE  
OFF THE POSTERN, CASTLECRAG. ALL RESIDENTS AND FRIENDS VERY WELCOME.

---

UPDATING THE TREE PRESERVATION ORDER.

Council is concerned at the increasing incidence of the destruction of trees in the Municipality; with the intention of reducing this and maintaining the maximum number of trees in healthy shape it has resolved to update the existing Tree Preservation Policy. A draft of this new policy which will cover ringbarking, cutting down, lopping removing, injuring or altering the soil level around the base of trees, will soon be circulated as widely as possible for comment before enactment.

Any person contravening the provisions of the new order will be liable to a penalty under section 126 and 127 of the Environmental Planning and Assessment Act, 1979. The maximum penalty under the act is much more severe than previously. As before, however, the difficulty is defining "what is a tree?"

OUR LOCAL RADIO STATION 2 NSB-FM.

Seven years of hard work and effort by many dedicated residents, aldermen, friends and particularly by the Chairman Robin Wood, have succeeded in providing us with a first class F. M. Community Radio Station. It was opened by Mr. Tony Staley, the former Minister for Communications at a colourful ceremony at the Dougherty Centre on 21st May last. The Mayor, Noel Reidy who has given a great deal of support to the project, the member for Bennelong, John Howard and Robin Wood all addressed the gathering.

The station broadcasts daily on 91.5 MHZ (91.5 on your dial) and provides a wide variety of high quality middle of the road music, up to date local news and events, multicultural/ethnic programmes, historical sessions and popular entertainment. It is broadcast from the centre of Chatswood and although low powered it provides good signal strength over the whole of the Municipality.

BUS SHELTER AT END OF EDINBURGH ROAD.

After years of frustration this bus shelter is to be built at last. Council has praised the Association for its imagination in this matter and has offered \$2000 towards the cost of the project. Details of the competition were given in the last edition of CRAG. Anyone wishing to enter should phone me on 956146 for particulars of size and arrangement. Entries close 1st July, 1983. Please submit to me at 325 Edinburgh Road.

**le'Crag.**

**FRENCH RESTAURANT**

*first class French and Continental cuisine*

**958-1357**

**122 Edinburgh Road, Castlecrag  
(off The Postern)**

**THE BALLET STUDIO  
School of Classical Dance**

Classes held at the Castlecrag  
Uniting Church Hall, Charles Street.

Expert classical ballet tuition for children  
through to advanced students.

Director: Patrina Coates  
Former solo dancer with Borovansky  
and Australian Ballet Companies.

Phone 95 5043

CASTLECRAG

**Chem-mart**

**The Quadrangle :: Telephone: 95 2196**

***NEW RANGE OF SUPER-VITAMINS...***

***.... NOW AVAILABLE!***

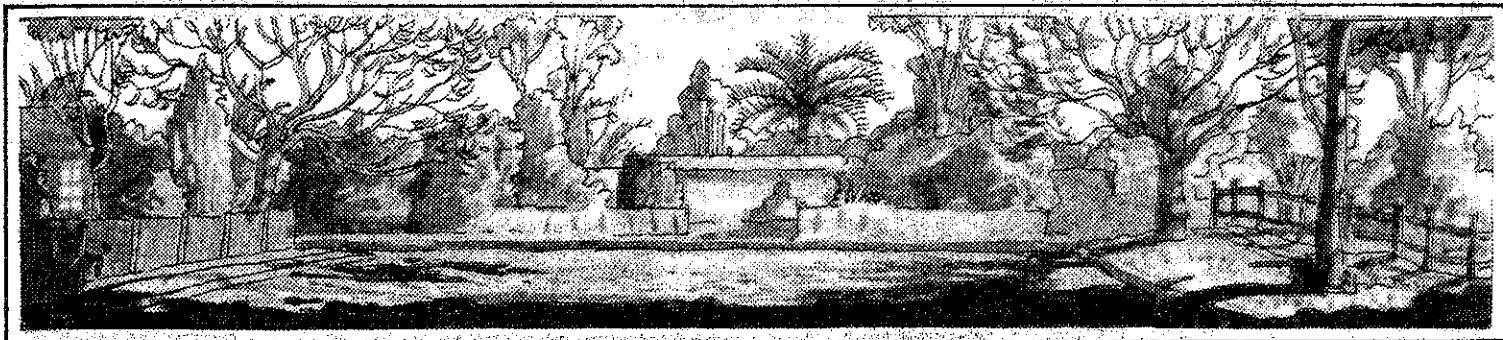
WALTER BURLEY GRIFFIN MEMORIAL FOUNTAIN. ..... Mrs. Addie Saltis.

Situated on the island at the junction of Sortie Port and Edinburgh Road, the Walter Burley Griffin Memorial Fountain was Castlecrag's main contribution to the Willoughby Municipality Centenary Celebrations in 1965.

It was commissioned by the now defunct Castlecrag Community Centre Committee to honour the memory of Walter Burley Griffin, the architect and developer of the original Castlecrag Estate. The fountain was designed and constructed by Bim Hilder, who had worked with Griffin, the design is based on the diamond or crystalline shape favoured by Griffin, in free form nodules of copper.

The fountain was unveiled on Centenary Day, 23rd October, 1965 by Alderman McGinty, Mayor of Willoughby. On the same day native trees and shrubs were planted at the shopping centre, several owners of Griffin houses opened their homes for inspection and a demonstration of the design and construction of knitlock tiles, used in several of the Griffin houses, was organised in the infants' School grounds.

The committee's appeal to residents for funds to construct the fountain was oversubscribed by £400 (pounds). Much of this was later donated to the Castlecrag Infants' School for a preliminary landscaping plan for the school grounds.



## NIGEL'S QUALITY MEATS

Griffin Centre  
120 Edinburgh Rd, Castlecrag  
Phone 95 0065

For  
top quality & friendly service

## PAULINE'S CRAFT

Shop 12, 100 Edinburgh Road  
Castlecrag 2068

Pauline Rutten

Phone 95 4499  
A.H. 93 2553

### FREE LUNCH TIME FILMS

Each Wednesday, during June to August, films will be shown at the BAILEY HALL, CIVIC CENTRE, CHATSWOOD. There will be two sessions, 12.05 to 1 p.m. and 1.05 to 2 p.m. If you happen to be in Chatswood, take this opportunity to sit awhile, enjoy a film, and if you choose, take your lunch along with you.

#### PROGRAMME.

##### June.

- 1st. Living Treasures of Japan.
- 8th. Desert Voyage through Syria.
- 15th. The Pampas (South America)  
Streets are for sharing.
- 22nd. Schools in Soviet Style.  
Exercises for anyone, anytime.

##### July

- 1st. Wholistic Medicine, Mind/Body/  
Spirit (note: Friday this week)
- 6th. Arnhem Land's Famous Artist,  
Narritzin at Djarrakpi.

##### July

- 13th. Isreal: Building a dream.  
Gardens of Scotland.
- 20th. Incas.
- 27th. Gilbert & Sullivan "Gondoliers".

##### August

- 3rd. Moslems in Spain  
Spain: Social Life and Customs.
- 10th. Somerset Maugham - biography.
- 17th. Beethoven - Life & Music  
Mystery of the Mounds.
- 24th. Hong Kong: Social Life & Customs.

Interested in Films? Why not join the film selection committee?  
Ring the Community Arts Officer on 412 3333 extension 110 for details.

# CASTLECrag CELLARS

122 EDINBURGH ROAD, CASTLECrag PHONE 95 2682 or 958 1507

## DISCOUNT WINES BEERS & SPIRITS



# Harvey World Travel

"The Quadrangle" 100 Edinburgh Road, Castlecrag.

Telephone 95 6203 A.H. 48-6392

***Find the Sun! ... 7 nights accommodation, Return air fares, Full board on a twin share at ... DUNK ISLAND! \$947. per person ... available till 19th August 1983.***

## EXPRESSWAY HISTORICAL RECORDS.

Rita Kaye.

Eric and I are now sorting through all material on the fight against the expressway, so that it can be safely stored away. Some of our records go back to 1948. Should anyone have a copy of a submission they made to Mr. Kirby, whether for or against the expressway, or any other relevant item, and is prepared to have it included, we would appreciate if you get it to us. It is important that we have all points of view, so that the historical records are correct.

We are keen to have everything together, to be prepared should the fight have to be taken up again.

We are also considering presenting a copy to the Willoughby Library at their request, to be put into their archives.



**PATON & ASSOCIATES PTY. LTD.**  
REAL ESTATE AGENTS, VALUERS & MARKETING CONSULTANTS

• 81 EDINBURGH ROAD, CASTLECRAG, 2068 — TEL. 958 1200

YOUR LARGEST LOCAL REAL ESTATE AGENCY

PHONE TERRY LAMBERT OR PETER MILLER FOR

- \* The efficient and effective sale of your property
- \* Obligation-free opinion of market value
- \* Property management

MUNICIPALITY OF WILLOUGHBY ...ARTS ADVISORY COUNCIL.

Nominations are invited from interested volunteers within the Municipality of Willoughby to form an Arts Advisory Council. Members of this committee will be involved in the planning of art and craft exhibitions, to be held in the new Civic Centre Exhibition Space (opening August, 1983) and the instigation of an Art Prize and competition for Willoughby Municipality.

It is hoped that a broad representation of all forms of arts and crafts will be achieved and that persons with accounting, legal or administration skills will also nominate. For further information, please ring 412 3333. ext 110. Nominations to be forwarded to Town Clerk by 1st July, 1983.

## CASTLECRAG MEATS

CNR RAEBURN AVENUE & EDINBURGH ROAD

TEL. 95-4274

\* EXCELLENT SERVICE \*

\* TOP QUALITY MEATS \*

\*\* Bulk meat packed to  
\* your requirements! \*

+ Phone Orders 95-4274 +

FREE HOME DELIVERIES  
TUESDAYS & SATURDAYS



LE CRAG

Printed by...

KU-RING-GAI BUSINESSPRINT

449-1174

95-5792

### SHOP KEEPERS...

**BOOST SALES! IMPROVE BUSINESS!**

**ADVERTISE IN 'THE CRAG' .... Only \$150 for  $\frac{1}{4}$  page  
in 6 issues or \$75 for  $\frac{1}{8}$  page. Contact Prue Leith  
on 955463 for FREE ARTWORK.**