

TRAMP

NEWSLETTER OF THE CASTLECRAG PROGRESS ASSOCIATION 1925 - 1985. * SIXTY YEARS OF COMMUNITY INVOLVEMENT*

NO. 44.

ISSN 0814-2054

JANUARY / FEBRUARY, 1986.

PRESIDENT'S REPORT

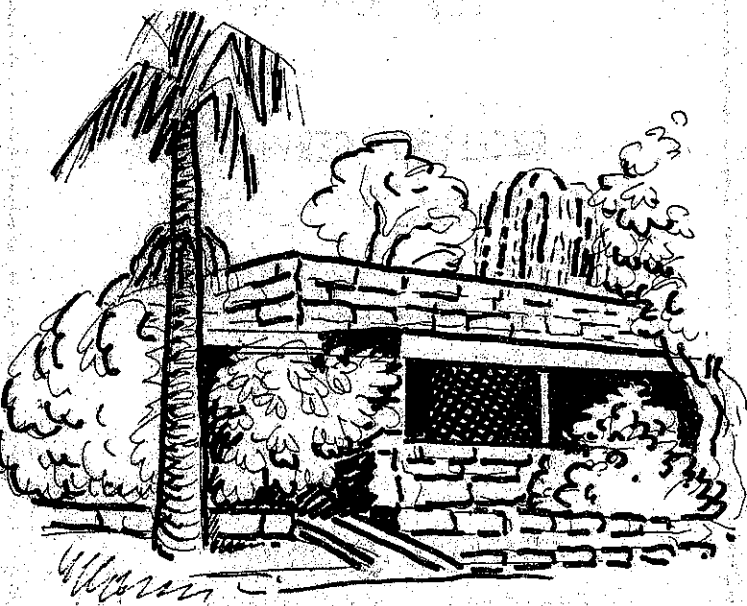
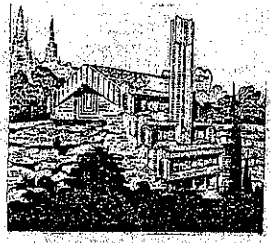
DIANNE STREET.

A happy New Year to everyone! A warm welcome to new residents and to former residents who have returned to live in Castlecrag.

Complaints about noise have increased dramatically during the past six months. Much to the annoyance of many residents, building or construction work is being carried out beyond the prescribed time. We remind people to consider their neighbours when using chain saws or noisy machinery, particularly during the weekend and on Sunday mornings.

Residents wanting to hold garage sales are requested to seek permission from the local council. We ask you to refrain from nailing signs on the trees in the shopping centre or to any trees in the streets or reserves around our suburb. Most Estate Agents have co-operated with the Conservation Society's request not to nail their signs on trees, we still have to educate some building and swimming pool contractors as well.

Without the interest and support of our residents, Castlecrag is close to becoming rather neglected. If you have ideas or time to help your community please join us at our next meeting.



THE ANNUAL GENERAL MEETING OF THE CASTLECRAG PROGRESS ASSOCIATION WILL BE HELD AT THE COMMUNITY CENTRE, THE POSTERN, ON TUESDAY 25th FEBRUARY, AT 8 P.M. ALL RESIDENTS AND FRIENDS ARE VERY WELCOME.

PLEASE NOTE THAT THE DATE OF THE NEXT MEETING OF THE CASTLECRAG CONSERVATION SOCIETY HAS BEEN BROUGHT FORWARD TO FRIDAY 21st FEBRUARY AT 5 THE TOR WALK AT 8 P.M. RESIDENTS CONCERNED WITH THE PRESERVATION OF C BUSHLAND ARE WELCOME TO COME ALONG.

On 25th February at our annual general meeting the positions of editor and all other executive positions of our Progress Association will become vacant. It is appropriate at this time to report on the history and policies of the CRAG. Ann Korner and I have been joint editors for the past three years and have continued the format started by Bob Ronai in 1978. Prior to this time Rhody Thomas edited a newsletter during 1977 and earlier still, in 1974 Tom McConnell produced our first regular news sheet.

Through these years, the policy has remained substantially the same. It is firstly to advise all residents of the activities and decisions of our Progress Association in respect of issues as they arise, and also to advise them of resolutions of council, particularly those affecting this Precinct.

We also report the activities of our various sub groups, such as our Conservation Society and when active, our anti-Expressway Committee. We attempt to present items of general interest to our residents and pride ourselves on our non sectarian non political, and we hope, fair reporting.

Some 12 months ago the State Library accepted the CRAG for registration and now files a copy of each issue as information for future generations. One important aspect which we attempt faithfully to record is our history whilst it is still fresh in the minds of our older residents.

High on our list of priorities is the preservation of our urban bushland. Our suburb is privileged to be surrounded by some of the finest bushland in the metropolitan area; much is at risk because of the intrusion of urban development. Our policy is to correct the mistakes of the past and to restore and preserve what remains for the enjoyment of all. In furthering this policy, we publish articles by our conservationists from time to time on steps which can be taken to protect this heritage.

The cost of the 1100 copies which we distribute amounts to just over \$1200 per year. Approximately half of this is paid for by our advertisers, the remainder from fund raising activities. We thank those who support these functions, and ask our residents to support our advertisers. We welcome written contributions to our paper and are always open to suggestions on ways in which it may be improved. Our thanks too, go to those who supply the originals of the art work used to embellish the paper and also to those who distribute the paper every second month.

CASTLECRAG LIBRARY - NEW BOOK LIST

MANDEL, Sally	PORTRAIT OF A MARRIED WOMAN.
FOWLES, John	A MAGGOT
MASTERS, Olga	A LONG TIME DYING
MURDOCK, Iris	THE GOOD APPRENTICE
JAGGER, Brenda	A SONG TWICE OVER
BROOKER, Anita	FAMILY & FRIENDS
JOLLEY, E.	WOMAN IN A LAMP SHADE
"	PALIMINO
STEWART, Meg	AUTOBIOGRAPHY OF MY MOTHER.
DEIGHTON, Len	LONDON (111 in Trilogy)
MACLEAN, Alister	THE LONELY SEA
HYMAN, B.D.	MY MOTHER'S KEEPER. (Bette Davis)
SMITH, Dick	THE EARTH BENEATH ME
FRAME, Janet	ENVOY FROM MIRROR CITY (Vol. 3)
GUINNESS, Alec	BLESSINGS IN DISGUISE
MICHENER, James	TEXAS

LIBRARY WILL NOW BE OPEN AS FOLLOWS:-

TUESDAYS - 3.30 - 4.30 p.m.
 THURSDAYS - 12.30 - 4 p.m.
 SATURDAYS - 10 a.m. - noon

CASTLECRAG MEATS

CNR RAEBURN AVENUE & EDINBURGH ROAD

TEL. 95-4274

* EXCELLENT SERVICE *

* TOP QUALITY MEATS *

* Bulk meat packed to
* your requirements! *

+ Phone Orders 95-4274 +

FREE HOME DELIVERIES

TUESDAYS & SATURDAYS

TWO RECENT COMMUNITY FUNCTIONS

Castlecrag has held two very successful community functions since the last issue of The Crag. The first was in December, when approximately 150 residents and friends attended Carols by Candlelight at the Haven Theatre. The weather was good, many people walked to the theatre and the bus transport arranged from the shopping centre worked well. It was good to see so many family groups come along.

We would like to thank the members of the Conservations Society for their work in getting the theatre into good shape, and also Mark Howarth, Minister of the Willoughby Presbyterian Church who organised the function. It was very tastefully and imaginatively presented. The singing was led by St. James Church Choir and was supported by an electric organ played by Mrs. Bottomley. Mark plans for an even better evening next Christmas.

On Sunday morning, 19th January, a planting of native shrubs took place at the corner of the Citadel and Edinburgh Rd., in memory of Roma Hilder and other residents who during their lifetime had played an important part in the cultural and environmental life of Castlecrag. Many residents of very long standing attended, and many others who had moved away came back for the occasion. It was pleasing to see so many young people who have made their home in Castlecrag, join in with this community function. These included a number who had grown up here, and had come back to live.

We estimate that about 200 people came along, and many took the opportunity to plant a shrub. Later, we went across the road to Bim's home for a bite to eat and to view an exhibition of Roma's paintings, and to see a film about Bim's father, Jesse Jewhurst Hilder. Paintings by Jesse hang in all state galleries and most provincial galleries, and the film gave us the opportunity to see most of his work.

We would like to thank members of our conservation society for organising the planting, and for all the work they did to prepare the area, in particular, Beverly Blacklock, Harold Spies and Mark Crew. The garden will become a place of pleasure and pride for our residents and a satisfaction for all who took part in the planting.

Northbridge Women's Bowling Club

Warners Park, The Outpost (off Kamaruka Rd,) Northbridge.

SPECIAL ANNOUNCEMENT!!

OPEN DAY SATURDAY MARCH 8th at 1p.m.



COME AND JOIN US! COME ALONE OR COME WITH A FRIEND AND SEE HOW THE GAME IS PLAYED * SHOES AND BOWLS WILL BE SUPPLIED. LATER ON, STAY AND ENJOY AFTERNOON TEA WITH OUR SOCIAL AND BOWLING MEMBERS OF THIS VERY FRIENDLY, HAPPY CLUB. BESIDES BOWLING CLASSES, WE HOLD YOGA AND ART CLASSES. BRIDGE AND MAH-JONGG LESSONS ALSO AVAILABLE. FOR FURTHER INQUIRIES, PHONE 95 6322 or 958 3480 after hrs.

CASTLECRAG

Chem-mart

The Quadrangle :: Telephone: 95 2196

FOR FRIENDLY RELIABLE SERVICE
AT COMPETITIVE PRICES
SUPPORT YOUR LOCAL CHEMIST.

Remembering the basic rule - work from good to bad - there will only be a scattering of young weeds to deal with when you start caring for your patch of bush. These will usually include -

Seedlings: Privet, Tantan, camphor laurel, cassia, wild olive etc. Learn to identify them. If you are not sure its a weed, leave it in. Next time around it may be recognisable or you will be more knowledgeable. Seek advice from the Conservation Society (Secretary, Addie Saltis: 95-6409) or borrow a book on weeds from Willoughby Municipal Library. Robin Buchanan: "Common weeds of Sydney Bushland" is an easy one.

The smaller seedlings can be hand pulled. Just grasp firmly at the base and pull gently, shaking the soil from the roots as they come out. If you meet with resistance, loosen the soil a little around the base with the trowel or knife, get your hand down lower and try again. Tap off any soil that comes up with the roots back into the hole. Hang the plant upside down in the nearest native and replace any mulch you have disturbed. Easy! But as the plant gets bigger, so do its laterals or surface roots and they have an unpleasant habit of dividing or diving under rocks or the roots of a native. A hefty yank (or a mattock) may remove the plant but will result in the massive soil disturbance which we are trying to avoid, or worse still, damage the roots of the entangled native and kill it. So leave in larger seedlings (say higher than 30 cm.) until you are more proficient.

Free seeders: Mainly grasses and herbs. Try to remove them before they seed to avoid tiresome 'follow-up'. Also they can then be left on the ground as mulch. Otherwise the seed heads must be cut off and bagged.

- * Crofton Weed, Cobbler's Peg etc. These are usually hand pullable as above.
- * Flat weeds, e.g. Plantains. These will regrow if the tap root is not completely removed. Rather than digging, try this:- Drive the knife, side on, into the soil close beside the plant and push the handle towards the plant. Do the same on two other sides of the plant. It should then pull out easily. Replace mulch.
- * Paspalum and other clumped grasses. Gather the leaves tightly in the left hand. Insert the knife close to the roots and at an angle, so that the tip is well under the plant. Cut in an arc around the roots. Replace mulch.
- * Small asparagus 'fern' seedlings can be flicked out and bagged. (Large, even huge ones, respond to a crowning technique similar to that used for paspalum, which it is easier to 'show' than to 'tell'.)

If you are really interested come to the next Kindergarten Bicentennial Project working bee, where a trained regenerator can demonstrate.



Neighbourhood watch PROGRAMME.

ANNUAL GENERAL MEETING

PLEASE NOTE THAT THE ANNUAL GENERAL MEETING HAS BEEN CHANGED FROM 18th FEBRUARY TO MONDAY 3rd MARCH, AND WILL BE HELD AT ST. JAMES CHURCH HALL, EDINBURGH RD, AT 8p.m.

PLEASE MAKE EVERY EFFORT TO COME ALONG, AS THE SUCCESS OF THIS PROGRAMME DEPENDS ON YOUR SUPPORT.
FURTHER QUERIES PHONE PETER EVERETT (958 1051)

NIGEL'S QUALITY MEATS

Griffin Centre
120 Edinburgh Rd. Castlecrag
Phone 95 0065

For
top quality & friendly service



PATON & ASSOCIATES PTY
REAL ESTATE AGENTS & MARKETING CONSULTANTS
MEMBER OF THE HOMESEEKERS GROUP

TERRY LAMBERT
A.H. 411 2284

81 EDINBURGH ROAD, CASTLECRAG

958 1200



P.O. Box 20 Mosman N.S.W. 2088 Australia
Telephone (02) 969 2777 Telegraph Zoology Mosman

Zoological Parks Board of New South Wales

- Taronga Zoo, Sydney
- Western Plains Zoo, Dubbo

CARING FOR LORIKEETS

Birds are fascinating and delightful creatures. People have been attracting birds to their gardens for years. The most common practice is to put out food for the birds.

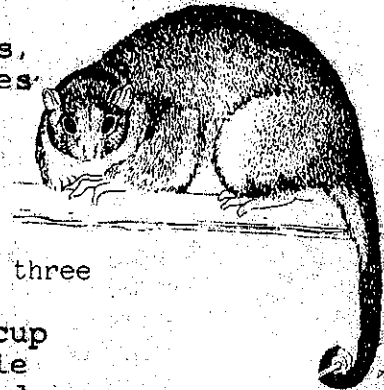
Colourful rainbow lorikeets are frequently offered honey or sugar water on bread. In the wild, the lorikeet's "sweet tooth" attracts it to wholesome foods such as nectar, blossoms, pollen, various fruits, berries and seeds. The birds also eat other vegetable matter and some insects.

People who feed them only honey (or sugar water) and bread unintentionally contribute to dietary imbalance in lorikeets. This causes problems for young lorikeets, ranging from poor feather growth to limb deformities.

The best thing to do for suburban birds (and mammals) is to plant native vegetation that supplies them with the blossoms, fruit, seeds and insects they need. There are several books available on this subject.

Feeding native birds a balanced diet is more work than just putting out a bowl of honey and bread. A balanced ration for lorikeets would consist of:

- * A wide variety of ripe fruits, such as grapes, rockmelons, pawpaws, oranges, pears and apples.
- * A seed mixture such as is sold for budgies.
- * Mixed greens
- * A nectar mix made up of one part brown sugar to three parts Heinz High Protein baby cereal to ten parts water, plus one teaspoon Pet Vite per cup of nectar mix. (The baby cereal is available from any food store; Pet Vite is manufactured by I.G.Y. Manufacturing Pty. Ltd., 29 O'Brien's Road, Hurstville, 2220.)

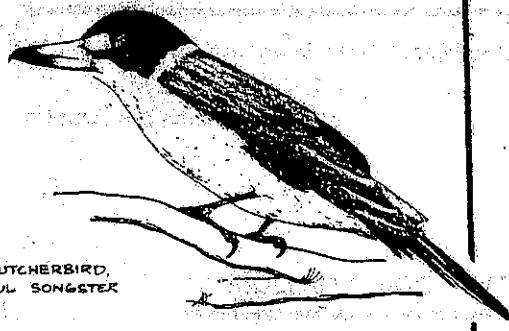


Lorikeets will prefer the artificially sweet nectar mix to the other foods and so cause a dietary imbalance themselves. For this reason, it is important to feed the nectar mix sparingly, at a rate of one teaspoon per bird. The other foods may be given freely.

Caution: The nectar mix should not be left out for longer than six hours (especially in summer) as it will sour and may cause illness.

*NSW Dept. of Agriculture advises not to use honey as this can spread diseases harmful to bees. (Mix to consistency of honey.)

GREY BUTCHERBIRD,
BEAUTIFUL SONGSTER



Jim Young Real Estate

THE QUADRANGLE

100 EDINBURGH ROAD • CASTLECRAG • 2068

If you wish to buy or sell a home, contact Jim Young for courteous and genuine service, backed by over 30 years' personal experience in these lovely areas.

GENUINE BUYERS NOW WAITING

TELEPHONE: 95-0124

After Hours contact:

Jim Young, 9 Minnamurra Rd., Northbridge. Phone: 95-1894

LOCAL NATIVE GARDEN

OPEN DAILY FOR

INSPECTION.

ONE BEVERLEY BLACKLOCK 95 6994

CONSULTANT SPECIALIZING IN

LOCAL BIRD-ATTRACTING PLANTS

AN INVITATION FROM ST. JAMES' ANGLICAN CHURCH

ELAINE FOWLER.

St. James' Anglican Church is situated in Edinburgh Rd., Castlecrag. Services are conducted there every Sunday morning at 10.30 a.m. and in the evenings at 7.15 p.m. on the second and fourth Sundays of the month. You would be warmly welcomed to these services.

Children from the age of three are invited to join the Sunday School which meets every Sunday morning of the school term between 9.30 a.m. and 11.30 a.m. Older children of high school age may attend "Craggs" at 7.30 p.m. on Friday evenings during school term to participate in interesting and varied activities.

Please ring the Rector, Rev. David Tyndall on 95 2245 if you would like information about other activities which take place in the parish. These are outlined in a brochure which will be posted or delivered to you on request.

WILLOUGHBY FESTIVAL.

Willoughby Municipal Council will be holding a festival again this year. Should you need further particulars, please phone Jenny Barrett on 412 9106.

Saturday	8th March	Bush Dance in Willoughby Park
Sunday	9th "	Jazz Concert in Civic Centre
Friday	14th-16th	Model Railway Exhibition in Town Hall
Saturday	15th "	Dancing Spectacular in Civic Centre foyer
Saturday	15th "	Street Festival - Parade & Street Stalls
Saturday	15th "	Rock Concert - for venue, phone 412 9106
Sunday	23rd "	Rock Gospel Concert " " "

CASTLECRAG CELLARS

122 EDINBURGH ROAD, CASTLECRAG PHONE 95 2682 or 958 1507

DISCOUNT WINES BEERS & SPIRITS