

TRAMP

NEWSLETTER OF THE CASTLECRAG PROGRESS ASSOCIATION

No.30

SEPTEMBER - OCTOBER 1983

COMMITTEE REPORT

CASTLECRAG PROGRESS ASSOCIATION.

" A NOTICE BOARD FOR CASTLECRAG COMPETITION"

The Castlecrag Progress Association would like to erect a notice board in the Quadrangle (near the stairs). Size Approximately 1.5M x 1M. Phone Eric Kaye or Con Saltis for more information.

The winner of the Bus Shelter Competition will be announced at our next meeting (25th October, 1983. at the Community Centre.)

PROPOSED EXTENSIONS TO NORTHBRIDGE MARINA.

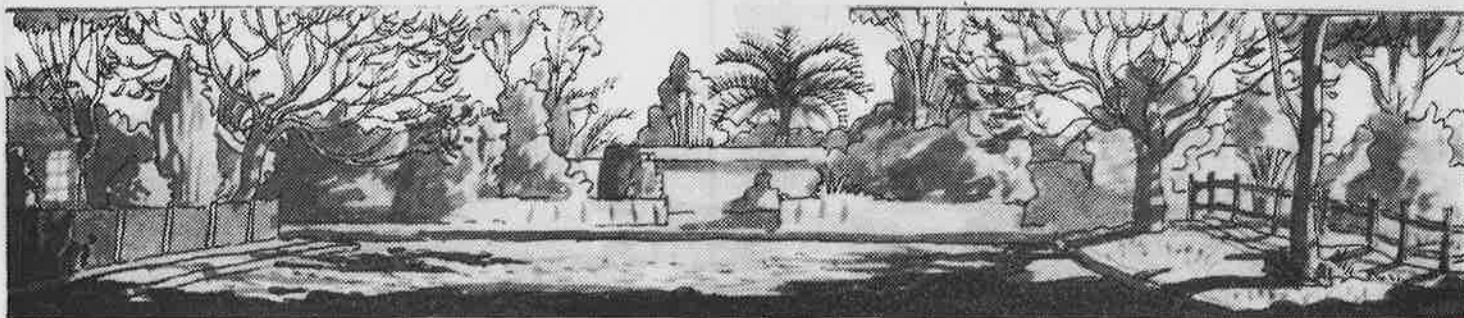
The hearing was adjourned in September and is expected to resume again on 17th October, 1983. Those interested contact Tim Trumbull for further information - 95 5669.

BUSH DANCE

Yes it is on again.! NOVEMBER 19th 1983 6p.m. to 11 p.m.

GOOD BAND GOOD FOOD Prices Adults \$10, Families \$25 Children \$6.00
Students.

HELPERS NEEDED Phone Tim Trumbull 95 5669



* NEXT MEETING OF CASTLECRAG PROGRESS ASSOCIATION WILL BE HELD ON
TUESDAY 25th OCTOBER, 1983 at 8pm . IN THE CASTLECRAG COMMUNITY CENTRE
OFF THE POSTERN, CASTLECRAG. ALL RESIDENTS AND FRIENDS VERY WELCOME. *

ALDERMAN'S REPORT

Eric Kaye.

The recommendations made by Mr. D.S. Kirby on the Warringah Freeway Corridor are now public, most will have read the brief reviews in the newspapers and those 67 residents who made submissions will have been advised by mail. Our association has been provided with a draft copy of the document, this is a book of some 400 pages, written in magnificent style. It is a technical document about a freeway and the impact on people and their environment. It is very readable and logical. I urge all to borrow the Association's copy and study it. (Please contact a member of the committee to get on the reserving list). It gives support to the campaign our residents and our Progress Association have fought over for 30 years.

Consider now the six recommendations made and the attitude of our Progress Association to them:-

1. "The inquiry recommends against reinstatement of the corridor"
(This refers to the original corridor which was abandoned in 1977).

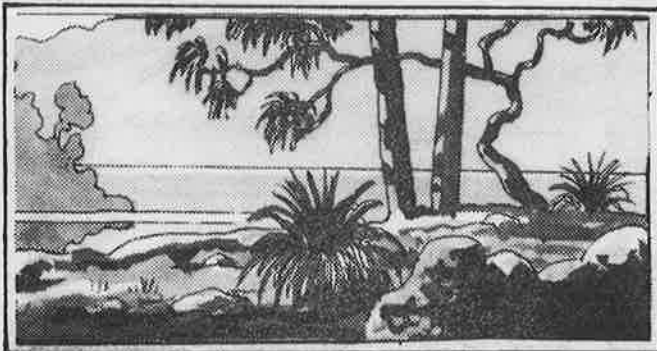
We fully agree.

- 2, "The inquiry recommends that a narrow corridor should be retained for a future arterial road from Eastern Valley Way (opposite Mowbray Rd,) to Willoughby Rd.

We do not disagree with this as a principle, but before such a road is built a full investigation should be carried out on the traffic implications of the proposal on Eastern Valley Way and Roseville Bridge. (The D.M.R. estimate to construct a four lane freeway for this link is \$44.5million. Mr. Kirby's comment to this is "has there been some mistake?" Is the explanation the significant interchange contemplated at Narremburn.?)

3. "The Northern escarpment at Castlecrag is an area of immense charm. It has been neglected. The Inquiry recommends the preservation of the escarpment as open space."

We fully agree.



THE BALLET STUDIO School of Classical Dance

Classes held at the Castlecrag
Uniting Church Hall, Charles Street.

Expert classical ballet tuition for children
through to advanced students.

Director: Patrina Coates
Former solo dancer with Borovansky
and Australian Ballet Companies.

Phone 95 5043

CASTLECrag MEATS

CNR RAEBURN AVENUE & EDINBURGH ROAD

TEL. 95-4274

* EXCELLENT SERVICE *

* TOP QUALITY MEATS *

** Bulk meat packed to **
* your requirements! *

+ Phone Orders 95-4274 +

FREE HOME DELIVERIES
TUESDAYS & SATURDAYS

CASTLECRAG

Chem-mart

The Quadrangle :: Telephone: 95 2196

***CLEARANCE SALE... Below cost make-up.
Hundreds of items...all \$1.50 each!!
Revlon · Arden · Lancome · etc.***

4. Mr. Kirby's fourth recommendation relates to the Burnt Bridge Creek at Manly - We agree.

5. This recommendation relates to property which will become available when the plan is adopted.

"The property owned by the Government should be referred to the Property Advisory Management Committee for disposal or acquisition by other Government agencies. "

We agree with this; it offers the possibility of Council acquiring land for a number of worthwhile community projects.

6. A Warringah Railway.

"If contrary to our primary recommendations, the Government feels that a corridor should be reinstated, we recommend as follows:-

1. the corridor should be no more than 12 metres wide, being the width necessary to accommodate a double track railway.

2. the corridor should not make provision for stations. It is impossible to say at this stage with any degree of assurance where stations can best be located.

3. a corridor greater than 12 metres would be necessary on the escarpment, if the cut and fill method of construction were employed. that method would be environmentally so damaging as to be unacceptable. Accordingly a 12 metre corridor (and the viaduct method of construction) is appropriate even in this area."

Elsewhere in the document (p218) Mr Kirby discusses this in greater detail and considers both an underground railway (as recommended by our association) and alternatively a northly route Gordon to Narrabeen.

Mr. Kirby states "We have made it plain that the decision, in any event is not one for today. It will be made, if at all in the next century. No doubt there will be technological advances in tunnelling. Tunnelling is likely to become more attractive the longer the decision is postponed."

With this we could not disagree.

Finally, I feel our community should be very pleased with the outcome of the inquiry and warmly commend Mr. Kirby and his staff for the decisions they have made.

NIGEL'S QUALITY MEATS

Griffin Centre
120 Edinburgh Rd, Castlecrag
Phone 95 0065

For
top quality & friendly service

KNITTING WOOLS
HAND KNITS TO ORDER
HABERDASHERY & CRAFT
ALTERATIONS
PICTURE FRAMING

Phone: 95 4499

Pauline's Craft

SHOP 12, THE QUADRANGLE
CASTLECrag 2088

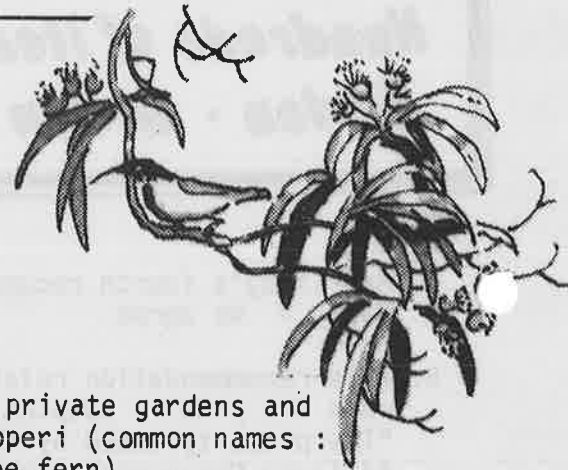
THE ODD TREE FERN.

The Conservation Society.

There are many tree ferns growing in Castlecrag, both in private gardens and public reserves. Most belong to the species *Cyathea Cooperi* (common names: Coin Spot tree fern, Cooper's tree fern or Australian tree fern).

This is a handsome fast-growing fern with the apex of the trunk and the unfurling croziers covered with long silky blond scales. On a mature specimen the fallen fronds leave large oval scars on the trunk, hence one of the common names. As it is a prolific colonizer it is difficult to say whether it was introduced. Perhaps some of the old timers may recall having seen tree ferns in the moist gullies when they settled here. Whatever the answer it is well established now.

This fern normally grows with a single upright trunk, usually fairly straight, topped with a single crown but there is the odd exception. In Mrs. Cook's garden, at 17 The Bastian, there is an unusual specimen, branched like a tree, with six or seven crowns. It is growing right on the verge of the road at the side of Mrs. Cook's driveway and is readily visible from the roadway.



CASTLECrag CELLARS

122 EDINBURGH ROAD, CASTLECrag PHONE 95 2682 or 958 1507

DISCOUNT WINES
BEERS & SPIRITS



Harvey World Travel

"The Quadrangle", 100 Edinburgh Road, Castlecrag.

Telephone 95 6203 A.H. 48-6392

***1st class fare to LONDON and return
\$4999.... with Qantas and British Airways..
...too good to miss!!***

A LITTLE HISTORY OF THE CASTLECrag PROGRESS ASSOCIATION

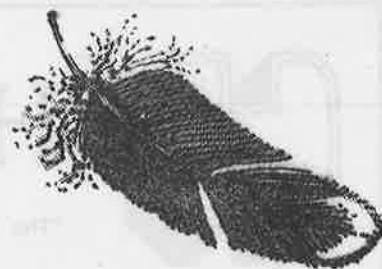
Rita Kaye.

Groups of people have come together over the ages to work for, fight for or just discuss, things in which they were vitally interested. One such common interest is the suburb where one lives, and the desire to incorporate in it the things the residents want. Such a group of residents got together in Castlecrag in 1925, when on 10th November, the Castlecrag Progress Association held their inaugural meeting in the basement of the Castlecrag shops (now the Castlecrag Cellars) and elected Walter Burley Griffin to the Executive Committee. Things the Association fought for in those days included a Post Office, transport, garbage collection, electricity and sewerage. Tree planting was high on the list, despite potholes and straying cattle, a hinderance to any street beautification. In 1929 the wife of one of the members, Mrs. Dot Trinick, opened a school which was certified by the Minister of Education for the instruction of children up to 10 years of age; this served a great need. Later came the building of the Community Hall, and the functions to raise the money to help cover this cost.

In 1949 the expressway first raised its fearsome head; the Progress Association fought hard on this one, presenting a petition to the Minister (with over 1000 signatures) and holding public meetings, one of which attracted over 300 residents. For the time being the threat went away, but a transport corridor remained to remind residents that someday it could return.

The Quadrangle at the entrance of our suburb is another example of a suburb fighting for its rights, with the co-operation of the majority of residents. The fight cost us all dearly, over \$6000, but at least we achieved a result more in keeping with our area. We now have an affiliated group, The Conservation Society, whose aim is "the preservation and conservation of all aspects of the natural and social environment" and who have aroused in most of us a desire to include indigenous plants in our own gardens, and have done much work in planting and regenerating our open space. Other community achievements include planting of islands, building of the fountain, restoration of the amphitheatre, running our library, and one of the latest, successfully campaigning for traffic turning lights at the Edinburgh Road Eastern Valley Way corner.

The Expressway did return, and we have had two recent battles, first in the early 70's and again in the last few years. Once again the Progress Association, backed by the residents, took up the challenge. Commissioner David Kirby's report has been published and his recommendations are in close agreement with our own views. We now await Government's decision on the report. And now, at long last, it looks as though all the remaining homes in Castlecrag will be sewerred.



(cont'd)

During these years the members of the Association have changed, but the enthusiasm to work in the community is the same. We are now publishing what we feel is a "good little paper". We are hoping that the residents will regard "The Crag" as their paper, and contribute items of interest to the community. The cost is \$200 per issue, which is met partly by the advertisements inserted by local shops, the remainder raised by functions, such as our stall at the Fun Fair held on 17th September, where we sold goods provided by the community.

Why not join the Progress Association, and play an active part in improving our community: your help is needed to continue this good work. The cost is a modest \$4.00 per family per year.

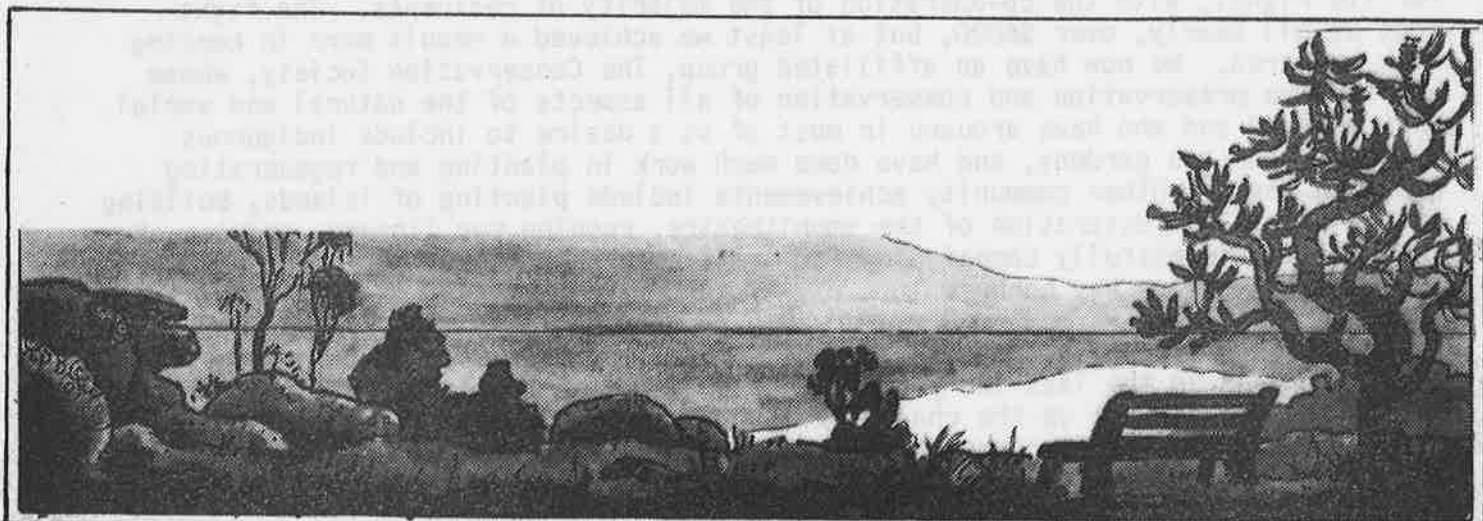
CENTRE ART SPACE

EXHIBITION OPENING.

Prue Leith.

Over two hundred people attended the opening exhibition of the "Centre Art Space" on Thursday September, 15th.

Dr. Lloyd Rees, a great artist himself, and strong supporter of community arts, opened the exhibition space that has been made available in the foyer of the Civic Centre, Chatswood, with full support from Willoughby Council. The opening exhibition was a multi-media display representing local artists and craftsmen, which was very well received and appropriate as the C.A.S. has been designed for the people in the Willoughby district to exhibit their work. If you are interested in such activities either exhibiting or viewing - ring Ms Sue Alvarez on 412 3333.



THE CRAG IS PRINTED BY KU-RING-GAI BUSINESSPRINT - TELEPHONE 4491174