



CASTLECRAG  
PROGRESS  
ASSOCIATION

# THE CRAG

*A voice for the community since 1925*

ISSN: 0814 2054

No. 217

MARCH 2024

## Keep Reserve boundary change

The name has now been officially assigned. *Story p5*

## What the CPA has achieved

An outline of many of our many achievements. *Story p8*

## A Very Friendly AFFAIR

Perhaps you were one of the many hundreds of people who attended the Castlecrag Community Fair last October and experienced for yourself the fun and friendly atmosphere.

Mayor Tania Taylor launched the Fair on a very warm Spring Day, then she and local Councillors Hugh Erikson, John Moratelli and Roy McCullagh met and chatted with residents for the rest of the morning.

Community groups were out in force and there were some fabulous local, small businesses on show. Castlecrag florist, Josephine Kelly, was one such stallholder whose bunches of flowers were beautifully fresh and fragrant. On market days, Josephine leaves home at 4.30am to get to the flower markets at Flemington for opening time. She works out of her garage and mostly for weddings and events, but Josephine is keen to find a way to work closer to home. Last weekend she provided the floral arrangements for a wedding in Kiama.

"I would be happy to arrange flowers in people's homes for special occasions and dinner parties. Also, if there is enough interest, I could perhaps sell bunches of seasonal flowers from my garage. People would need to order the day before, so we don't have wastage," she explained.

Gardeners were very well catered for, whether it was the super-healthy herb and veggie seedlings from the Market Garden Park Community stall, native plants from WEPA, orchids from Josh Burgess or succulents from Siaw Pui. There was something for every green thumb.

Scott Graham curated another wonderful display of classic cars in The Parapet which, once again, captivated people's interest. The free Reptile Display was a strong drawcard for the kids.

The sounds of live music wafted through the air as local musicians and choirs entertained the crowd with a wide variety of musical styles. Willoughby Public School Band had 45 players making music together. They were tight, tuneful, dynamic and very impressive. A great credit to their Band Master! Bird photographer Matt Keighery, who now presents a regular bird news piece in The Crag, was responsible for bringing the entertainment together on the day. He acted as MC and stage manager. Matt kept the acts coming along and even played his guitar and sang a melodious set with his friend, Brian. Richard Newton also did a great job, providing and mixing the sound for the day.

Allegra, from the Rampart, was the youngest and bravest performer of all when she very competently sang a few songs solo, assisted by a backing track. Later she wrote to Matt

"Thank you so much for organising such a wonderful fair. I loved it so much especially the reptile park - I got to hold the crocodile and the



*Lachlan meets his first blue-tongue at the Fair*

snake I love...but my favourite part was going on stage and hearing all those songs..."

Thanks go to the Progress Association (CPA) for facilitating this much-loved biennial event for the community and to our sponsors - Willoughby Council, McGraths and Lexicon. Local member Tim James made a small donation, which covered the cost of the face paint. Bucketloads of thanks and appreciation goes to the organising committee and to Fair Co-ordinator Trish Lunn, who did a sterling job. Thanks also to those who donated their time or pre-loved goods to the CPA's book, jewellery, face-painting and bric-a-brac stalls, and to Mark Crew for picking it all up!

Florist Josephine can be contacted at 0418 863 577 or [Josephinekelly0@gmail.com](mailto:Josephinekelly0@gmail.com)

### INSIDE THIS ISSUE:

- |          |                         |           |                       |
|----------|-------------------------|-----------|-----------------------|
| <b>2</b> | From the Editor         | <b>6</b>  | Rotary                |
| <b>3</b> | From the Vice President | <b>7</b>  | Heritage Festival     |
| <b>4</b> | From the Mayor          | <b>8</b>  | Great Day at the Fair |
| <b>5</b> | Keep Reserve boundary   | <b>10</b> | Obituaries            |
|          |                         | <b>12</b> | Birds                 |
|          |                         | <b>15</b> | Community Gardens     |

**THINK LOCALLY!**

**SHOP LOCALLY!**

**EMPLOY LOCALLY!**



# THE CRAIG

is the community magazine of the Castlecrag Progress Association Inc.

PO Box 4259  
Castlecrag NSW 2068

emails to the CPA:  
[info@castlecrag.org.au](mailto:info@castlecrag.org.au)

## COMMITTEE 2022-2023

- Vice Presidents** Kate Westboy  
Paul Stokes
- Secretary** Paul Stokes
- Treasurer** Diana Jones
- Cultural Officer/ Editor** Lindy Batterham
- Conservation Officer** Mark Crew
- Committee** Gay Spies OAM  
Ruth Kendon  
Leon Smith  
Scott Graham

## Write to us

We welcome letters and contributions from residents about local issues.

Send to: [editors@castlecrag.org.au](mailto:editors@castlecrag.org.au)

Letters should be concise (preferably less than 250 words).

Editorial guidelines are on the web page.

*Disclaimer:* The CPA and *The Crag* is not responsible for information or advice in contributed articles or letters. Readers should seek their own personal, professional advice.

## Design and print production

Meredith Shimmin ☎ 0416 078 832  
[meredith@shimmin.com.au](mailto:meredith@shimmin.com.au)

**Printing:** Clarke Murphy ☎ 9417 6444

# From the Editor

The calendar tells us it's Autumn. Already! There's lots of local stories to catch up on. Last issue was half the usual size, and mostly devoted to the Fair.

The Mayor informs us as to what happens in the DA process for 100 Edinburgh road, now submissions have closed. Many are hoping it will go through the Planning Panel quickly, so that the village centre can be built without further delay. The Mayor also clears up the confusion expressed recently on The Crag Community Facebook site regarding the Postern carpark. Not ALL spaces will be lost.

The legacy of Marion and Walter is being kept alight in different ways. Read how the Keep Reserve boundaries have been extended back to how it was in the Griffin plan. At the Heritage Festival on 4 May, there will be an opportunity to visit two of the Griffin homes, and free screenings of the short film *The Paradise Plan*.

We have belated Obituaries for two wonderful people who died last year. Coincidentally, both men were awarded an AM (Member of the Order of Australia), although 10 years apart. They were givers to this community, and also the larger society. Condolences to their families. We need more people like them!

This issue offers a number of opportunities to give through gardening! Apart from all the existing bushcare groups, there is a new one starting up at the lofty Turret Reserve. Or there's the community gardens to join and share in the produce. Then there's a new Growing for Wildlife

group just beginning in Flat Rock Gully. Such choice!

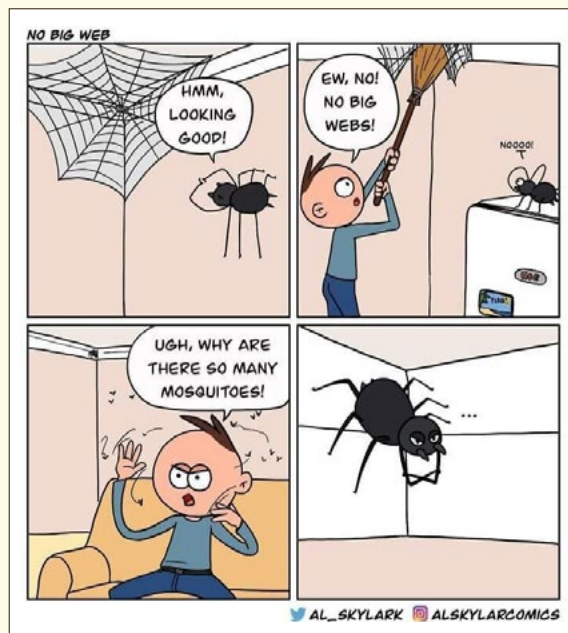
Vice-President (and Secretary) Paul Stokes gives an account of the activities of the CPA over the last ten years, which hopefully will make members feel proud to belong, and encourage non-members to join the Association and get involved to empower it to achieve even more in the community!

On that note, I'm still looking for assistance in producing this publication. I'd love to hear from you.

## Lindy Batterham



Outdoor arrangement by Josephine



AL\_SKYLARK ALSKYLARCOMICS



# From the Vice President

Since my last report in 2022, much has changed. At the last AGM there was no nominee for the position of President. Kate Westoby and I were elected Vice Presidents and the President position remains vacant.

There have been a few interesting developments recently. The DA for 100 Edinburgh Road (the old Quadrangle site) has now been submitted. Despite some confusing messages about storeys, the DA preserves the envelope of the approved Planning Proposal and Richard Francis Jones remains the architect. It still looks like what we were expecting. (see image).

The main changes, compared with the Planning Proposal, are an increase in commercial space from 1760 sqm to 2127 sqm, fewer apartments (53 to 38) and an extra basement floor for parking. CPA is

making a submission to Council in support of the DA. There has recently been some disquiet about the DA's absence of detail regarding the retail areas on the ground floor plans. We are advised by Council that this is normal practice. The developer, Ilya Melnikoff of Luxcon, has agreed to come and speak at CPA's General Meeting (see box below).

We also recently made a submission to Council regarding a proposal to create a 40 kph zone along Edinburgh Rd from Eastern Valley Way to Rutland Ave. The Committee considered the four options being suggested but felt that none could sensibly be implemented until the development at 100 Edinburgh Road was completed. Instead, we recommended that Council should use the time to survey Castlecrag's streets against the new NSW Speed Zoning Standard, published in July 2023, setting out design speed limits for 7 categories of local street. This could lead to a wholistic speed limit strategy instead of piecemeal proposals.

The latest issue occupying our time is the new planning rules being proposed by State Government. There appears to be a seismic shift in the intent of the proposal that now threatens significant consequences for Castlecrag. It all hinges on the term "town centre". Among other things, dual occupancy would be approved for all properties of greater than 400 sqm within 800 m of a "town centre". If Castlecrag is a "town centre" this would encompass just about all of the R2 zone to the North of Edinburgh Road between Eastern Valley Way and Sunnyside Crescent to the East. Even though submissions closed on 23 February, this is an issue with a long way to go. Fortunately, it seems that C4 zones, which the conservation area sits in, will not be affected.

Looking forward to seeing you at the upcoming meeting at the Bowlo.

**Paul Stokes**

**CPA GENERAL MEETING**

**Wednesday, 20 March 2024**  
**7:30 - 9:00pm**  
**Willoughby Bowling Club**  
**Screening of *The Paradise Plan***  
**Guest Speaker: Ilya Melnikoff, MD Luxcon**

**ALL WELCOME**



Castlecrag

Castlecrag

Knowledge | Experience | Results

Are you looking for a hard-working, award-winning agent with strong negotiation skills & the widest buyer reach? Call Harriet for professional advice, experience and the best results.

**Harriet Halmarick**

0415 739 009 | harriethalmarick@mcgrath.com.au

**McGrath**

Northbridge

## From the Mayor



Thank you for the opportunity to provide the community with an update in this Autumn edition of *The Crag*.

The consultation and exhibition period for the proposed 40km/h High Pedestrian Activity Area (HPAA) in the Castlecrag Local Centre is now closed.

A HPAA will improve pedestrian safety with the implementation of traffic calming measures and a 40km/h speed limit on the local road network. The HPPA is proposed to be implemented along Edinburgh Road between Eastern Valley Way and east of The Postern, as well as intersecting roads including Raeburn Avenue, Rutland Avenue and The Postern.

Thank you to community members who made submissions, or came along to our

pop-up session on 23 January 2024. All comments and suggestions made will be taken into consideration. Residents can monitor the progress of the proposal by reviewing the agenda of the Traffic Committee meetings published on the Willoughby City Council website.

A DA for the redevelopment of the Castlecrag Shopping Village (100 Edinburgh Road) was on public exhibition and open for comment up until 1 March 2024. The application proposes a building with 3, 4, and 5 storey components with a mix of residential units and retail uses. It envisages 38 residential apartments, a supermarket and other retail uses and three levels of basement parking with 159 parking spaces. Once the submission period closes, it will be determined by the Sydney North Planning panel. A separate application for the demolition of the current buildings was also on public exhibition until 20 February 2024. The DA for demolition can be determined under delegation, however if it receives more than 10 submissions then it will be forwarded to Local Planning Panel to determine. More information and supporting documents can be found on Council's planning portal via our website.

On the 29 November 2022, Council considered a Notice Of Motion regarding the installation of the proposed sculpture to celebrate Marion Mahony Griffin, at the Griffin Centre. The project was then

exhibited as part of Council's 2023/24 Draft Operational plan, which was subsequently adopted on 26 June 2023. This plan allows for the 6 car park spaces to remain on the north side of the car park, including the existing disabled car park space. Council's Traffic Engineers reviewed the scheme, and confirmed they have no concerns regarding impacts on the existing provision of disabled parking. On The Postern, 2 hour parking restriction has been introduced for two car parking spaces to ensure a greater turnover during the day. Before the works begin, site signage, including the design will be installed.

After nine years of leadership, our Chief Executive Officer, Debra Just has announced her retirement to return to family in Adelaide. Debra has left a long lasting legacy at the Council and across our community and we look forward to celebrating her achievements. Council will now take the necessary steps to undertake recruitment to fill this position. We wish Debra all the best in her retirement.

As we continue to progress with our projects and initiatives, I encourage residents to stay connected through our website, email and socials. I am confident that with your invaluable support and my steadfast commitment, we will build a stronger and more vibrant Castlecrag.

**Tanya Taylor**



### Unrivalled Local Knowledge

Providing excellence in Real Estate Service Over 30 Years Service in *The Crag*

Are you interested to know what your property is worth? If so, contact our office today for advice from agents who really know your area and get results!

Mark O'Brien 0413 879 778  
Sales Manager - Licensed Real Estate Agent

**Richardson & Wrench Northbridge/  
Castlecrag 9958 1200 | [rwnc.com.au](http://rwnc.com.au)**



**183-191 High Street  
North Willoughby  
Level 1 - upstairs from  
Dose Espresso**

## Studio High Street Pilates & Personal Training

**WINNER BEST MEN'S & WOMEN'S  
PILATES STUDIO, NORTH SHORE\***

Small Group Training & PT using The Pilates Reformer,  
Weights & Props

[www.studiohighstreet.com.au](http://www.studiohighstreet.com.au) @studiohighstreetpilates

**For Women & Men Whole Body Workout**  
**All Ages & Levels of Fitness**

**Core Strength Low Impact on Joints**  
**Perfect your Posture Body Symmetry**  
**Balance & Coordination Family Passes**  
**Exercise for menopause Pelvic Floor**

*Pilates Reformer is globally recognised in the Sports and Exercise Science Industry as THE GOLD STANDARD in Athletic conditioning, injury rehab and prevention - for elite athletes, sportspeople & the everyday person looking to realise their optimum movement potential.*

**\*Winner APAC Insider 2024**  
**Contact us for your free trial session Phn: 0404 831 552**



# Walter's and Marion's 'KEEP RESERVE'.

A significant area of land, that had been named Warners Park by Willoughby City Council, had previously encompassed Keep Reserve and even part of the Castlecrag Community Centre. However, plans designed by Walter Burley Griffin and drawn by Marion Mahony Griffin showed this land as being called Keep Reserve. Part of the 1920s marketing for the Castlecrag subdivision showed photos of features that then became recognised by Council as part of Warners Park.

This land however, lies in the Griffin Heritage Conservation Area as defined in the Willoughby City Council's Development Control Plan and as recognised by the National Trust of Australia. So, an application to the Geographical Names Board (GNB) was made last year to have this area renamed as the Keep Reserve. The application was successful. In response, Willoughby City Council was notified that as per Section 10 of the Geographical Names Act 1966, the name Keep Reserve has been officially assigned in the NSW Government Gazette on 29 September 2023.

A big thank you, and well-earned recognition, is given to Rampart resident and Convenor of the Keep Reserve Bushcare group Matthew Keighery. His research drew into original plans held in the local studies section of Willoughby City Council Library,

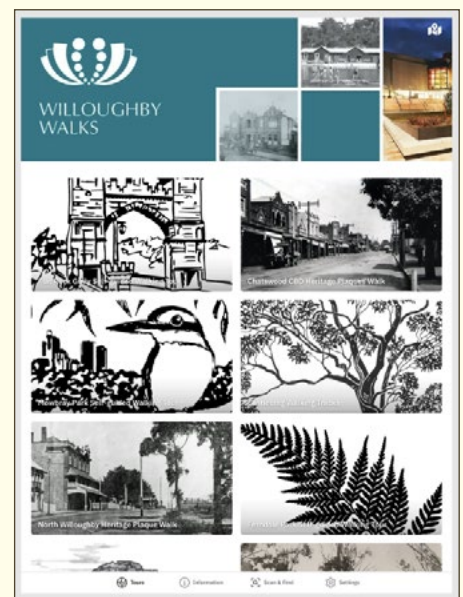
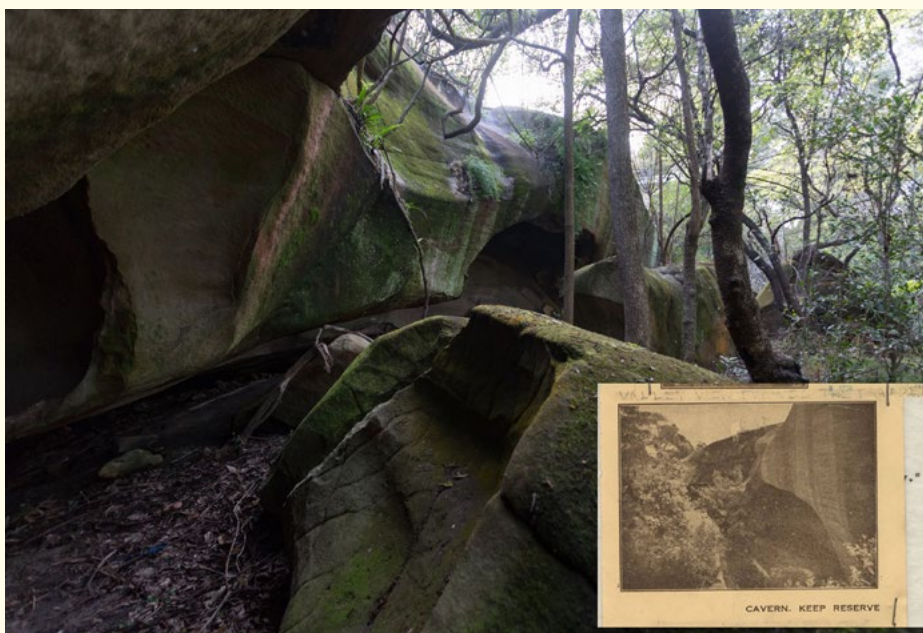
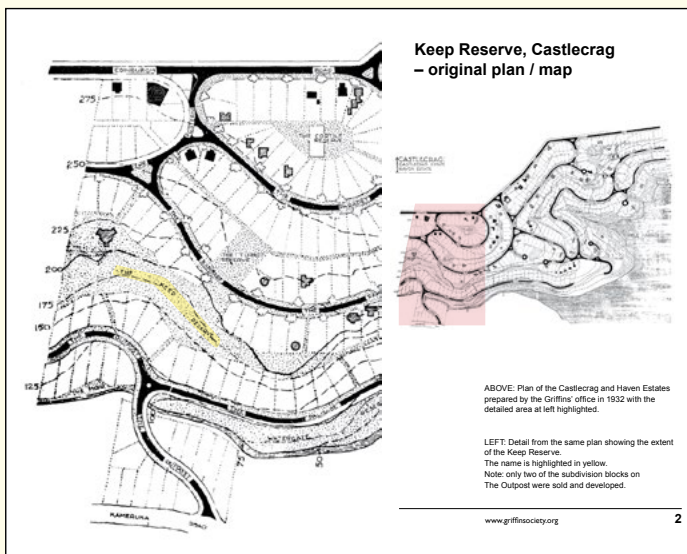
showed that the Griffin's original intent was for Keep Reserve to be a much larger bushland reserve located behind the houses on The Rampart.

This reserve area extended southward across to what was then the Warners Dairy, as well as eastward between what was proposed houses on the north side of The Outpost. Those houses were never built. Having the Griffin's plan of the Keep Reserve officially recognised by the GNB means that the Reserve now more closely reflects Griffin's original vision and makes it easier for people to understand the historical subdivisions drawn on his plan for the area.

Thanks also to Adrienne Kabos, Committee member of the Walter Burley Griffin Society who assisted Matthew with gathering together information required by the GNB for the application.

If you are interested to discover the many reserves and linking walkways of the Griffin Heritage Conservation Area download the Willoughby Walks App to your smart phone and click on the Castlecrag Walking Tracks.

**Jan Felton and Matthew Keighery**



Keep Reserve



# Our local Rotary Club turns 40

Why isn't there a Rotary Club in Castlecrag? There is! The Rotary Club of Northbridge, founded in 1984, proudly serves Northbridge, Castlecrag and surrounding areas, and in early February celebrated 40 years of service to our broader community.

Long standing Castlecrag residents and club members and their partners Geoff and Jan Duggin, Bob and Margaret Edwards, and David Robertson were in attendance, as were more recent club members, Richard McDonald and Hugh Kelly. MC for the evening was former Crag resident Jon Gidney, with special guests including Mayor Tanya Taylor.

Around 90 members, guests and friends celebrated a history of regular celebrations, and a 10th anniversary, at the Bunga Ray Satay House at the Quadrangle, Open Garden Days around the Crag in 2006/7 and attempts to establish a local Chamber of Commerce in 2007/8 - with Ganache, Momo Interiors and Roger Page Real Estate. The importance of a safe, attractive entry to the Crag was high on the agenda! The Club also proudly featured their participation in last year's Castlecrag Fair, highlighting Rotary's current campaign to "Say No to Domestic Violence", and involvement in previous years with Willoughby Friends of Ossu, Timor Leste.

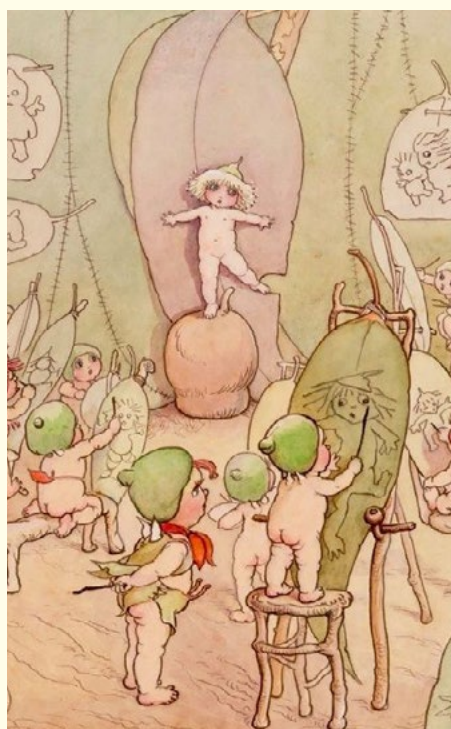
Club President Luke Keighery, highlighted the importance of the Club supporting and recognising non-Rotarians in our community who contribute in their own



way, providing invaluable service through their businesses or through volunteer work. By way of example, way back in 2000 Castlecrag butcher Graham Bulger was recognised for his service through the Club's Pride of Workmanship awards, as were Castlecrag Post Office owners John and Jennifer Bevege in 2014, and Chiropractor Chris Charlton in 2019. Bob McKillop was recognised with a Community Service award in 2014 for his contribution as a Railway Historian and the CPA and Bruce Wilson was recognised in 2015 for his work with the CPA and with Friends of Northbridge Baths.

The club welcomes new members and guests from Castlecrag. It meets on Tuesday evenings at Northbridge Golf Club from 6.30pm. Avenues of service for those who want to get involved include the local community, international projects, youth support – and the Club notes that they are looking for a suitable environmental project given this global Rotary area of focus.

More details are available at <https://www.northbridgerotary.org/> or <https://www.facebook.com/NorthbridgeRotaryClub/>



## Castlecrag Library

This is your Council-funded library and it has recently been reinvigorated with a bright new paint job and rearrangement of the shelves and furniture. There are many new picture books, adult fiction and a good range of chapter books for 7 - 13 year olds. There is a broad local history section on Willoughby and in particular Castlecrag. Also, a number of cooking and parenting books.

Why not pop in and see what we have on offer? We all know reading is vital to our educational development. Encouraging children to read from an early age is essential. What better place to go than a library! I've just finished Trent Dalton's latest, 'Lola in the Mirror'. I was absorbed - could not put it down.

**Kate Westoby, Volunteer Librarian.**

### Castlecrag Library Opening Hours

Tuesday,	3pm - 4.30pm
Thursday:	3pm - 4.30pm
Saturday:	10am - 12 noon

Location: Community Centre, bottom of The Postern next to KU





# Castlecrag's Event for the Australian Heritage Festival

**Saturday 4 May 2024**

The CPA is joining with the Griffin Society to present a combined Castlecrag event at this year's National Trust's Heritage Festival. CPA's film *The Paradise Plan* will be screened to coincide with the Griffin Society's opening of 2 Griffin houses and guided walks on the day.

*The Paradise Plan* is a short film that explores connections between Canberra and Castlecrag. It intertwines the aspirations of the Griffins in both places with the history of the Gigante puppets created in their name, as part of the campaign to save Castlecrag Infants School. Part doco, part fantasy, the film begins in Canberra, in the National Museum of Australia (NMA) where the puppets have been on exhibit for twelve years. They self-check-out and head for Walter's Lake. Through the puppets, the film explores Marion and Walter's time in the bush capital, before being transported back to the Sydney suburb they both planned to be their Paradise on Earth.

*"Inventive and delightfully whimsical, this short film is a mini-treasure - well worth watching."*

Andrew Pike, Managing Director, Ronin Films

There will be free screenings of *The Paradise Plan* at 12.30pm, 1.30pm and 4.45pm.

**Venue:** Marion Mahony Hall  
121 Edinburgh Rd Castlecrag

**All welcome**



*Interior of Felstead House*

Before or after viewing *The Paradise Plan*, visit the interiors of the Felstead house in Edinburgh Road, and the Duncan House in the Barbette, two beautifully restored Griffin homes with unique architectural features. It is a rare treat for the owners to generously open their homes.

All proceeds from the event will go towards the sculpture to honour Marion Mahony Griffin, to be installed locally later this year. Designed by artist Sandra Pitkin, the sculpture has been commissioned by the Walter Burley Griffin Society.

For bookings to view the houses and further information go to <https://www.griffinsociety.org/events/>



*Left: Duncan House above: Felstead House native front garden images: www.architecture.org.au*

## Notes ...

### Post Office

**A note from Jason:**

We finally moved to the Griffin Centre last weekend, thanks to a huge wave of support from the community. The next order of business is the relocation of the red mail box and the mail zone to the front of the Griffin Centre. The DA for the mail box relocation has already been approved, and Australia Post is working on making it happen. Looking forward to seeing you all soon!

### Ganache

Didier and his team have been enthusiastically welcomed back to the fold with his fare being as popular as ever.

### Carols 23

Despite the good efforts of Anna Neilsen in organising Carols at the Haven Amphitheatre last Christmas Eve, it didn't go ahead due to rain on the day. The Progress Association lost the \$350 put up to pay the public liability insurance required for the event to proceed, which also put a dampener on the day. Here's hoping next Christmas Eve will be sunny and bright!



## CASTLECRAG SPORTS CLUB

**Between the Parapet and Edinburgh Road lies the Castlecrag Sports Club**

- Book a tennis court at the Castlecrag Cellars for **\$20 per hour**
- Call coach Henry on **0431 149 533** for lessons
- Email [castlecragtennis@bigpond.com](mailto:castlecragtennis@bigpond.com) for membership

## CASTLECRAG

AUSTRALIA POST & GIFTS

Visit us for your  
**Passport  
lodgement  
and photos**  
No appointment  
required!

**Trading Hours**

**Monday to Friday: 9.00am–5.00pm**

**Saturday: Closed Temporarily**

**Now at shop 4, 120 Edinburgh Rd  
Castlecrag. P.O. Box access remains 24/7**

**Phone: 9958 8650**

***Business as usual***



# A Great Day at the Fair

Our biennial Fair, last October, was the best fund-raiser for CPA in the last 10 years. The very generous donations of books, jewellery and bric-a-brac from Castlecrag locals and others allowed us to raise over \$4,000. Seeing the activity at our stalls, a member of the attending public approached one of us and asked about how the money we raised was spent. This seems to be a very good question. This report seeks to answer that question.

From 2014 to 2020, CPA raised a total of \$10,640 from fund-raising stalls at the Fair. The rest of our nearly \$50,000 of expenditure came overwhelmingly from our members. Around half of our total expenditure funded a range of projects and donations to other groups that reflect CPA's commitment to community and, particularly, to community culture. The other half covered shortfalls on the cost of producing this journal and on-going administration cost.



Mary Anne on Bric a Brac at the Fair

## The most significant CPA projects were:

### Production of *The Paradise Plan*



The Paradise Plan crew

*The Paradise Plan* is a short film about the Griffin Puppets leaving the National Museum of Australia (NMA) in 2023. The Puppets had "resided" in the museum for 12 years as part of the Castlecrag Exhibit in the Landmarks exhibition on a 2-year loan from CPA. They were so popular that the museum extended the loan every 2 years until just recently.

Lindy Batterham, CPA's Cultural Officer, wrote and directed this short, whimsical film to record the history of the Puppets in both Canberra and Castlecrag. She and a number of CPA & WBGS members travelled to Canberra in March 2023 as the Puppets were leaving the museum and before they were packed into crates and driven back to Willoughby. They are currently "resting" at Council's depot.

The cost of producing the film was supported by a grant of \$7,000 from Willoughby Council with the remaining costs covered by CPA funds.

### Reprinting the Castlecrag Book

The Castlecrag book was first published in the 1970s as a fund raiser for Castlecrag Infants School. In the 1990s, efforts were made to have the book republished. Unfortunately, the plates had been destroyed and there was no satisfactory alternative until recently (2022), with the advent of high-quality scanning and printing. The images were scanned and the text typeset again. Lindy Batterham and Rex Dupain wrote a preface and an introduction to the new edition. Rex, the son of Max Dupain (a Castlecrag resident back in the day who took the photos for the book) gave permission to use his father's work. We had 500 copies printed and they are available from Castlecrag PO for \$30.





## Marion's birthday picnic in the Haven

This event was held in the Haven Amphitheatre on 20 March 2022. It was supposed to be a year earlier on Marion Mahony's 150th birthday but COVID got in the way. The picnic featured original music and songs written and performed by Oli Chang, commissioned by CPA. Oli is the son of long-standing Castlecrag resident Fabia Claridge. The music filled the gully with ethereal melodies accompanied by the Baysingers choir. Oli's music was later used in The Paradise Plan. The performance was made possible by the recent landscaping of the gully by Willoughby Council and was attended by Mayor Tanya. The occasion was marked by handing around 150 (+1) lemon tartlets made by Ganache.



... a couple from a group called "Come You Spirits" were present at the picnic and were so impressed with the Haven as a performance space that they came to CPA seeking our support for their performing Shakespeare in the Haven. We thought this was a truly inspired use of the site and so agreed to provide them with assistance organising their first production along with a donation to help them get started. Since then, they have done over 30 performances in the Haven, on the Solstices and Equinoxes (sometimes at dawn) between June 2022 and September 2023.



"Come you Spirits" performing A Midsummer's Night Dream at the Haven

## The Walter Burley Griffin Society sculpture

The Walter Burley Griffin Society contacted CPA in 2020 asking for a donation towards funding a sculpture they had commissioned in honour of Marion Mahony's contribution to Castlecrag. We considered this to be a good thing to support and agreed to a significant donation to help pay for the sculpture. The Society's plan is to mount the sculpture near the corner of Edinburgh Road and The Postern.



## How the CPA can do what it does

Administrative costs allow the Committee to do what it does. We have monthly Committee meetings, attend two-monthly meetings of the Federation of Willoughby Progress Associations and are actively involved in issues relevant to the community.

In particular, we have taken leading roles in:

- The Quadrangle Redevelopment by establishing the QLC (Quadrangle Liaison Committee) to interact with the developer. It consisted of three Committee members and two other CPA members; we organised public meetings so the community could hear directly from and ask questions of Council officers and the developer; we provided regular updates to the community through this journal;
- Getting a right-turn indicator installed at the intersection of Eastern Valley Way & Edinburgh Road by working with Council and Transport for NSW to ensure minimal loss of parking on Edinburgh Road.
- Placing of a bench near the Griffin Fountain to honour its creator, artist Bim Hilder;



- Advocacy to Willoughby Council over issues such as the Local Centres Strategy, Council Advisory Committees and speed limits.

CPA is dedicated to working for the Castlecrag community. We can only do this because of the support of our members' fees and donations. If you are not a member please consider joining the Association. If you have been a member, but let it lapse please renew. If you are a member, please consider standing for the Committee at our Annual General Meeting in June.

### JOIN the CPA

#### Membership:

\$20 per person \$10 student

#### Payment to:

Castlecrag Progress Association Inc.

BSB: 032 199 Acct no:355621

Direct debit or post cheque to:

The Treasurer PO Box 4259 Castlecrag 2068

Please include your name, address and email details.

[www.castlecrag.org.au/join](http://www.castlecrag.org.au/join)



## OBITUARY – Jeremy Guy Ashcroft Davis AM FRSN – 1942-2023



*Jeremy when AGSM Dean*

Emeritus Professor Jeremy Davis, a proud custodian of the Grant House at 8 The Parapet, died unexpectedly

last June. In the 1920s, this was the home of Walter Burley Griffin and Marion Mahony Griffin and served as offices for their Greater Sydney Development Company. Jeremy and his wife Jessica Milner Davis first lived there from 1980-89, rescuing the house that had been sold to a developer and saving it from rot and leaky roofing while happily bringing up their daughter Rachel Davis. At that time, Jeremy was Dean and Director of the Australian Graduate School of Management at UNSW (1980-1989) and Jessica was UNSW's Deputy Chancellor (1981-89). They had returned to Sydney from Paris where Jeremy had been a Managing Partner with the Boston Consulting Group (in San Francisco and Paris) and taught at Stanford Graduate School of Business. In Australia, he helped pioneer management education and, as an AGSM Professor until his retirement in 2006, received numerous awards for his exceptional teaching in strategy and negotiation. He was President of the Strategic Management Society (2002-4) and twice President of the UNSW Academic Board as well as a member of University Council.

Jeremy also had a distinguished career over 40 years as director of both major and minor boards and government bodies. He had a lifelong dedication to ethical business practice and helped found the St James Ethics Centre, as well as being a Fellow of the Institute of Company Directors. He was made a Member of the Order of Australia in 2008

for his services to education, business and commerce, particularly to tertiary education in strategic management and to academic governance. In 2014, he received The University of Sydney's Alumni Award for Professional Achievement. A former Director of the Australian Stock Exchange, in retirement, he enjoyed acting as private benefactor to many artistic and environmental causes as well as to Indigenous education and literacy. He was a Life Patron and board member of Sydney's Pinchgut Opera and an active supporter of Bangarra Dance Company, TaikOz, and the Australian Wildlife Conservancy among others.

Over the years, Jeremy, Jessica and Rachel were happiest doing things together as a trio, although Rachel's career as a human rights lawyer took her off to Harvard, New York and Europe. The trio became a quartet in 2012 when Rachel's husband, James Cockayne, joined the family. Jeremy was particularly pleased when Rachel and James moved back to Australia in 2020 after nearly twenty years abroad: it made eating wonderful meals together, at places like Martha's, much easier and gave him an excellent excuse to patronise Castlecrag Cellars.

The Davises had moved away from Castlecrag in 1989 to be closer to Jessica's aging parents in Northbridge and sold the Grant House to Drs Geoffrey and Vicky Nash. But 27 years later, they seized the chance to buy the house back from the Nash's with all the improvements they had since made. It was a pleasure for Jeremy and Jessica to be back among well-remembered neighbours and community and they threw themselves into some of the more fundamental solutions that the Griffin house still needed, especially renewing sewers and drains. Sadly, the project remained incomplete when Jeremy suffered a sudden aortic dissection last year. At the age of 80, he was still consulting professionally, informally



*Professor Davis on the deck of Sydney Opera House*

advising family, friends and colleagues, devouring sudoku puzzles and crosswords, reading, watching art-house movies, drinking exceptional wines, swimming, traveling and generally enjoying life. The house project he was so keen to finalise is now in its last stages as seen from the street (landscaping still incomplete at time of publication). The family believe he would be proud of it and the return to many aspects of the original Griffin design for the house.

While Jeremy will be deeply missed by all who knew and loved him, custodianship of the Griffin house continues with Jessica and the rest of the family. Several of Jeremy's in-laws are also proud residents of The Crag, Dr Jocelyn Chey AM in Edinburgh Road, and Stephen and Naomi Chey and family in The Bastion.

**Jessica Milner Davis PhD FRSN**

**Castlecragdental**  
99584557  
Dr Alex Dong & Dr Winnie Li  
105 Edinburgh Road  
[www.castlecragdental.com.au](http://www.castlecragdental.com.au)

**bai yok**  
modern thai cuisine

**Dine in, Take away & Home delivery**  
Licensed and BYO  
(Wine only)  
Tel: **9967 3433** Fax: **9967 3411**  
Shop 2A, 122 Edinburgh Road, Castlecrag

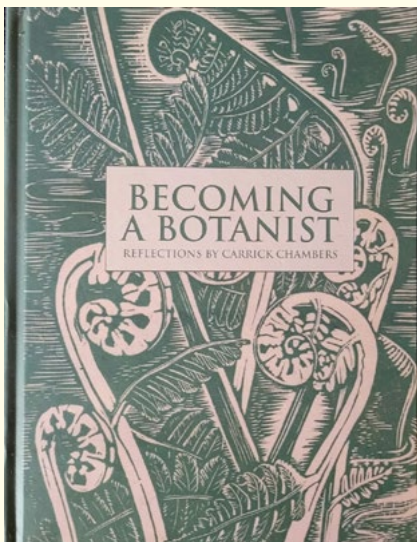


## OBITUARY – Carrick Chambers AM – 1930-2023

Carrick and Margaret Chambers moved to Sydney in 1986 after Carrick had been appointed Director of the Royal Botanic Gardens (RBG), Sydney, a position he held for 10 years.

Carrick was born in Auckland and, since early childhood, his over-riding interest had been plants, leading to an academic career in botany. He studied at Auckland University College where he graduated MSc, and at the University of Sydney where he graduated PhD (and met Margaret). In 1961, after a year in Cambridge working in the Botany School and the Cavendish Laboratory, he and Margaret moved to Melbourne where he was first a lecturer at the University of Melbourne, and later Professor of Botany.

In Melbourne, in addition to his university work, Carrick was involved in the conservation, management and rehabilitation of significant Melbourne gardens such as at Rippon Lea, Cook's Cottage and Government House. Foreshadowing his later career move, he chaired two committees of the (Victorian) Botanic Gardens Trust for 16 years. He also helped establish the 'Potter Farmland Plan' to restore over-cleared farmland, a movement which later developed into 'Landcare', and he was involved in several state government environmental initiatives such as the Reference Areas Advisory Committee which he chaired.



One Sunday in 1986, while they were debating where to live in Sydney, they happened to be driving along Eastern Valley Way past Castlecrag and decided to explore. Carrick had happy memories of several enjoyable parties he had attended in Castlecrag as a post-graduate student in the 1950s. A few days later they met local estate agent Jim Young and within days



*Dr. Carrick Chambers, Director, Royal Botanic Gardens / Robert Pearce / Fairfax Media*

bought their house in The Bulwark where they lived for the next 25 years.

During his time in Castlecrag, Carrick was involved with several local environmental and heritage organisations, particularly the Castlecrag Progress Association, Willoughby Environmental Protection Society (WEPA), the Castlecrag Conservation Society and the Walter Burley Griffin Society (of which he was Patron for several years). In addition, he was a member of the Griffin Reserves Advisory Committee within Willoughby City Council and in that role advised Council's Natural Heritage and Bushland Advisory Committee (NHBAC). He and Margaret were actively involved in bushcare in the Oriel Reserve behind their house. They were full and interesting years, and they both relished living in such a remarkable suburb, participating in local events and meeting, and making friends with, many delightful people.

While Director at the RBG, Carrick was responsible for the opening of the bicentennial gardens at Mount Tomah and Mount Annan, the building of the Tropical Centre and Fernery, the Rose Garden and Herb Garden, and sundials at the three gardens. A major event during his directorship was the discovery of the Wollemi Pine, *Wollemia nobilis*, by David Noble. Other significant activities were improving the career pathway for horticulturalists and expanding school education.

Carrick's botanical interests were broad and included electron microscopy, plant taxonomy, physiology, genetics, palaeontology, horticulture, heritage architecture and gardens (he was an

active member of the National Trust and the Australian Garden History Society). He was also interested in botanical art and a competent amateur landscape painter and was a Trustee of the Felton Bequest at the Art Gallery of Victoria. He enjoyed travelling to many amazing, and sometimes remote, places associated with his botanical and horticultural interests and Margaret's interest in ancient history and archaeology.

In the 1998 Australia Day Honours List, Carrick was awarded an AM (Member of the Order of Australia) in recognition of 'Services to botany and its application to horticulture... and as a teacher and researcher on conservation issues and botanical concepts.' In retirement he continued his research on the fern genus *Blechnum* as an Honorary Research Associate at the RBG.

Although they reluctantly moved to Mosman in 2017, they continued their association with Castlecrag and their many friends there.

During his retirement Carrick and his daughter Claudia wrote a book about his life, titled *Becoming a Botanist*, which was launched by the then RBGS Director, Denise Ora, in March 2023 and reviewed by Peter Bernhardt on the ABC Science Report in June 2023. Despite suffering from Alzheimers, Carrick was able to attend the book launch which was a very happy occasion attended by friends, family and colleagues.

He passed away peacefully four months later.

**Margaret Chambers  
January 2024**



## The Birds of Keep Reserve

On the second Sunday of each month, between 9 and 11 am, our Bushcare Group meets and works somewhere in Keep Reserve which connects Castlecrag with Northbridge and Warners Park.

Before each session I publish Bushcare News as a reminder and to share interesting information about sightings of wildlife. These have included an echidna, in the last edition, and a Sacred Kingfisher seen by Adrian in The Barquette, that had flown into his next-door neighbour's window.



*Sacred Kingfishers*



*Sacred Kingfisher*

The Sacred Kingfisher has featured in the newsletter since I saw one in October, for the first time in 20 years. A couple made their nest in a termite mound, produced one baby and moved on in late January, migrating north to spend the rest of the year somewhere along the coast. For Karen and I, these birds create the perfect backdrop for a sundowner. Over past months, the newsletter has provided words and photos of many birds. A few are reproduced in this journal.

Recently, I finally got to see a Brown Thornbill. They are small and difficult to see and have a dark red eye.



*Brown Thornbill*



*Rufous Fantail*



*Fairy Wren*

For a couple of weeks, we were visited frequently by a Rufous Fantail and we recorded a Fairy Wren seeming to admire its own reflection.



We were surprised to see a White-cheeked Honeyeater enjoying the nectar from the inflorescence of an Old Man Banksia. I love it when birds are attracted to trees and shrubs that I have planted.

Of late, we have also seen a number of medium sized birds such as the Olive-backed Oriole, the Australian Figbird, Wattlebirds and the Satin Bowerbird. It has taken a while to identify some of them. There are two species of Wattlebirds, which is confusing, and the Oriole and Figbird look incredibly similar except the Oriole has a red eye.

Recently, while talking to my niece, two Sulphur Crested Cockatoos landed on the verandah and commenced preening. It is very nice affection they show for each other but as I described what they were doing the preening to petting became heavy. I'd never seen sex between birds like it, both enjoying themselves a lot. My niece got the abridged version!



White cheeked Honeyeater



Sulphur Crested Cockatoos



Australian Figbird

Jeremy, who also lives in The Rampart, loves to talk to people about local birds. He met Mike, an avid bird watcher, who was looking at a Scarlet Honeyeater. Jeremy forwarded him my newsletter with photos of Powerful Owl infant twins, the second year this has happened in the only tree with a hollow large enough to support them. Mike, a long-term bird watcher got in touch with me and has joined the Bushcare group. He was born in Britain and raised in Hong Kong but recently moved here. On his first visit, he gave us a brief talk about his birding in Hong Kong. There are many keen birdwatchers in Hong Kong judging by the photo he sent me. Mike went looking for and found the nest of some juvenile Brown Goshawks we had seen. He also found the Powerful Owl twin roosting with Mum and Dad.

Did anyone see a flock of what looked like large swallows recently? We had 30 swooping and diving over our house. They were White-throated Needletails that migrate from Siberia to enjoy a Sydney summer.



So, why don't you come and join our Bushcare group or any of the groups in Castlecrag or across Willoughby? It is a great thing to do, we enjoy ourselves and are getting on top of some of the weed problems. Did I mention the morning tea?

Words and photos **Matthew Keighery**

# LILLYPILLY

indigenous landscapes

**native flowering gardens**

low maintenance  
water wise & friendly  
sandstone walls, paving & features  
large or small projects

**design**

landscaping  
maintenance

**Richard Blacklock**  
**0417 217 937**

**CASTLECRAG**

**CHIROPRACTIC**

**Ph: 9967 4477**

159 Eastern Valley Way, Castlecrag

[www.castlecragchiropractic.com.au](http://www.castlecragchiropractic.com.au)

Delivering quality Chiropractic care to the Lower North Shore community since 2003

We welcome babies, children and adults of all ages



# Pop along to the Transition Vamp @ Turret Reserve



Corporate day grass removal

There are some small pockets of very special bushland at Turret Reserve that are currently getting a revamp to transition them back to their former glory and we need your help!

Turret Reserve contains remnants of Sandstone Ridgetop plant community with a few plant species that are quite rare in Willoughby. Most notably the Eucalyptus Capitellata a brown stringy bark tree with globular seed capsules that sits within one of the remaining pockets of bush.

Surrounded by lawn, these pockets have been inundated with grasses like Kikuyu, Couch and Buffalo along with other garden escapees and common weeds. With the soil layer relatively intact

under the lawn, the plan for Turret Reserve is to regenerate the remnant bush whilst still providing open space and pathway down to Keep Reserve and The Postern. This will be all achieved without using one drop of herbicide.

The site's revamp project got a kick start when we had a group of corporate volunteers visit in mid-2023 removing the bulk of the weedy grasses. Since then, we have utilized tools like the flame weeder, mower and black plastic to help with weed control and the regeneration process. The site is coming along and we are discovering little "treasures" (also known as native seedlings) that have self-germinated along

the way. Our most recent discovery was a baby blue tongue lizard which we were quite over the moon about having not sighted one in Willoughby for many years.

If this has piqued your interest or you're slightly confused about how a piece of black plastic or mower will help to revamp bushland back to its former glory, then why not become a bushcare volunteer and join the group. Trinh and Phil will be your trainers on site and teach you the ins and outs of their weird, wonderful and herbicide free techniques and you may even have fun whilst doing it!

**The group meets on the 2nd Wednesday of each month 9:30am – 11:30am**, to sign up please send an email to [moniquevan.vugt@willoughby.nsw.gov.au](mailto:moniquevan.vugt@willoughby.nsw.gov.au) expressing your interest or visit the Willoughby council bushcare page and click the become a bushcare volunteer button.

**Monique Van Vugt**  
Bushcare Supervisor



Trinh and Phil

**ANYTIME FITNESS**

**LET'S GET MOVING CASTLECRAIG**

Enter the draw to win a 3 month membership @ Northbridge AF

Speak to us in-club for details!

\*T&C's apply. Offer available in select clubs only.



MGP gardeners enjoy gathering around the table



# Community Gardens: Market Garden Park



Long purple eggplants are showering us with fruit up to 20cm long. Despite an infestation of nasty 28 spotted ladybugs decimating eggplant leaves (and requiring ongoing squishing) lots of sunshine, water and good soil has meant abundant fruiting. Some of these aubergines have made it onto the morning tea table as baba ganoush dip.



*Cape goosberry ripening in its paper husk*

Green beans are another crop that delivers in abundance. At peak production we had them by the bucketful. Picking well right now are lovely specimens of Italian basil, thyme and oregano. Cute little cucamelons (olive sized mouthfuls that taste like a burst of cucumber and melon) deserve to be better known as they make an appearance. So too the scrumptious 'hooded' yellow berries called cape gooseberries.



*David and Janet with the garden shed*

Fresh bean crops are climbing. A new batch of lettuce seedlings is hurrying along. Red radishes are jumping out of the ground. Watering roster is in motion. Compost delivery has arrived. It's an active start to the year and we're enjoying the camaraderie.

Market Garden Park Community Gardeners love a good get-together as a side-dish with their gardening. Part of the fun is sharing around the table, be it stories, harvested produce, home-made treats, recipes or smiles.

Ever interested in improving our garden, a couple of Crag residents conceived of and constructed an outdoor storage shed using recycled materials including timber window screens. Special thanks are due to David Carolan and Bronwyn Guthrie.

It was a pleasure for MGP gardeners to participate in the community spirit of The Crag Fair last October, trading on the joy of propagating and growing.

Market Garden Park Community Gardeners meet on Wed and Sat mornings. We have



*Duan and the giant radish*

some raised wheelchair-accessible garden beds and we welcome people at all levels of garden experience. Our AGM will be on Sat 27 April 2024, 1pm at Castlecove Community Centre. For more info about us, or to make contact, visit <https://mgpcommunitygarden.com>

Words and photos **Mary Anne Veliscek**

## CASTLECRAG BUSHCARE Meeting Dates

### First Monday of the Month

- Tower Reserve 9-12 noon  
Contact: Jocelyn – 0402 158 518  
or Lisa – 0404 806 406

### First Sunday of the Month

- Cortile Park Care 8.30-11.30am  
Contact: Tim – 0403 883 254

### Second Sunday of the Month

- Gargoyle Bushcare 9-12noon  
Contact: Margaret – 0407 994 230
- Sunnyside Brushturkeys 9-12 noon  
Contact: Scott – 0431 462 588
- Keep Reserve 9-12noon  
Contact: Matthew – 0408 203 511

### Third Sunday of the Month

- Casement Reserve 8.30-11.30am  
Contact: Vicki – 0402 325 531
- Torquay Estate 9-12noon  
Contact: Jo – 0419 234 235
- Lookout Reserve 9-12 noon  
Contact: Adrienne – 0409 997 076

### Fourth Sunday of the Month

- Retreat Reserve 9-12 noon  
Contact: Jill – 0428 880 002



*Bucketloads of Beans*



## Growing for wildlife

A new project was recently launched in Flat Rock Gully which may spark an interest with some Cragites. Simon Brown, Willoughby Council's Wildlife Officer, and Flat Rock Bushcare have partnered with Wildlife Carer Shaun Warden who gained his experience setting up a similar growing site in Annangrove. They have put out a call to our community:

"Would you like to help grow food for sick, injured and orphaned native animals in the care of local wildlife rescue groups? We hold monthly working bees which are an awesome opportunity to learn about native gardening, local plant species, local wildlife and to have a laugh and connect with locals and wildlife rehabilitators in your area! A typical workshop and working bee could include an educational talk, weeding, watering, general maintenance of plots, planting new exciting plants, discussions about wildlife and lots of laughs. We even harvest food for the wildlife that are currently undergoing rehabilitation in your local area!"

### A bit about the project's history:

The project began when several Sydney-based wildlife rehabilitators faced an influx of wildlife needing rescue and care. Sourcing food for these animals while in

care is a challenge and many of these volunteers must spend hours each week trimming street trees for foliage and flowers. With ever increasing levels of compassion fatigue, something needed to be done. The opportunity for experienced wildlife rehabilitators to reach out and educate the community had diminished over intense rescue seasons.

Thus, a project that allows the wildlife rehabilitation community, bush care volunteers, citizen scientists and the general public to connect, develop and share a stronger knowledge base was needed. It's called *Growing Food for Wildlife*.

Putting all of the above together, Shaun Warden, a Sydney based wildlife rehabilitator, citizen scientist, educator and aspiring veterinarian reached out to local councils and land owners to source a space that might be suitable.

"We found a way to bring together many different communities to plant flora which can be used to help the wildlife rehabilitation community. All of this while we share knowledge and bring not only foliage and flowers for wildlife, but also a better understanding of fauna and flora for gardeners and land owners.



Simon from Council jumped at the opportunity to bring Shaun and the project to Willoughby. Flat Rock Gully was selected as the site. They have had their first meeting there and invite you to come gardening for wildlife every fourth Saturday of the month from 10:00am to 1:00pm. It is great fun and a fantastic learning opportunity for everyone involved. No experience is required! This initiative recently featured on the ABC's Gardening Australia. <https://www.abc.net.au/gardening/how-to/feeding-fauna/103087612>

**Next meeting:** Saturday 23 March 2024, 10:00 am - 1:00 pm

### Flat Rock Gully Walking Track Northbridge

**To register:** Go to <https://www.willoughby.nsw.gov.au/Events/Growing-food-for-wildlife-project-Flat-Rock-Gully>

**MOTZA**

PIZZA • VINO • GELATO

NOW OPEN @ Griffin Centre 6/122 Edinburgh Rd  
Dine in • Pick Up • Delivery - 02 9958 5555 • [motzapizza.com.au](https://www.motzapizza.com.au)