

NEWSLETTER OF THE CASTLECRAG PROGRESS ASSOCIATION

No. 21

NOVEMBER/DECEMBER, 1981

THE STRUGGLE FOR SEWERAGE

Nils Korner

A public meeting was held in the Castlecrag Community Centre on 7th November, 1981, to discuss problems of septic tank and sullage disposal in the Municipality.

It was attended by some fifty residents of Castlecrag and Northbridge, and by Mr. Peter Collins, M.L.A.

The meeting was convened by Charles Jagers and Nils Korner, and heard reports and discussion regarding the notices served to thirty or so residents by Willoughby Council under the Public Health Act requesting the installation of pump-out systems, or pumped connections to the Metropolitan Water, Sewerage & Drainage Board's sewers, or a private line, within 90 days.

A feasibility study of the Electrolux Vacuflow Suction Sewerage system is about to be undertaken by Consultants to the M.W.S. & D.B. in Northbridge, but Castlecrag has not been included in that study.

A long history of correspondence with the M.W.S. & D.B. regarding the provision of sewerage facilities came to light at the meeting. As long ago as 1967 the M.W.S. & D.B. claimed that there was an insufficient degree of residential development in Castlecrag to justify full sewerage; more recently, uncertainty regarding the future of the Warringah Expressway Transport Corridor has been put forward as the stumbling block.

continued next page...

.....
DUE TO THE FESTIVE SEASON, THERE WILL BE NO MEETING IN DECEMBER, 1981, OF THE CASTLECRAG PROGRESS ASSOCIATION.

THE ANNUAL GENERAL MEETING AND ELECTIONS OF THE ASSOCIATION WILL BE AT 8PM, TUESDAY, FEBRUARY 23, 1982, IN THE CASTLECRAG COMMUNITY CENTRE, OFF THE POSTERN, CASTLECRAG.

R.W'S MENSWEAR

OPEN ALL DAY SATURDAYS

QUADRANGLE — CASTLECRAG

For Smart Clothing and Accessories.



THE STRUGGLE FOR SEWERAGE continued

There was a strong feeling at the meeting that sewerage should be available for all properties in Castlecrag and Northbridge, which are after all situated within only 8 kilometres of the G.P.O.

A committee consisting of:

C.D. Jagers, N.H. Korner, A.B. Holt, M. Hruska, R. Norris,
R.J. Batterham (and subsequently M.S. Rassaby)

was formed to press the M.W.S. & D.B. and the Minister for Energy and Water Resources, Mr. Paul Landa, to proceed with the extension of the sewer network in Castlecrag.

Mr. Peter Collins undertook to seek Mr. Landa's assistance, and it is hoped that the Minister will receive a deputation. Letters have also been written to the President of the M.W.S. & D.B. and to the Minister, outlining the nature of the problem, and seeking its speedy solution.

Anyone who feels that they can help in this matter is asked to contact either Charles Jagers (95 3551) or Nils Korner (95 6069).



Castlecrag Squash Centre

Cnr Edinburgh Rd & The Postern, Castlecrag 2068 ☐ Phone 95 5891

BREAKFAST SQUASH

6.00am to 9.00am

LUNCHTIME SQUASH

SPA, SAUNA, SOLARIUM

BOOKINGS

95 5891

KEEP FIT — PLAY SQUASH

Season's
Greetings.....

to all
Castlecrag Residents
from the
Executive & Committee
of the
Castlecrag Progress Association

ALDERMAN'S REPORT

Eric Kaye (95 6146)

WARRINGAH FREEWAY ENQUIRY

I feel that this is still the most pressing problem facing our Community, and I would like to advise residents of the present position.

All major submissions (with the possible exception of the D.M.R.'s) are now with the Commission - the vast majority of these support the retention of the corridor and the construction of a freeway and/or railway as soon as funds permit.

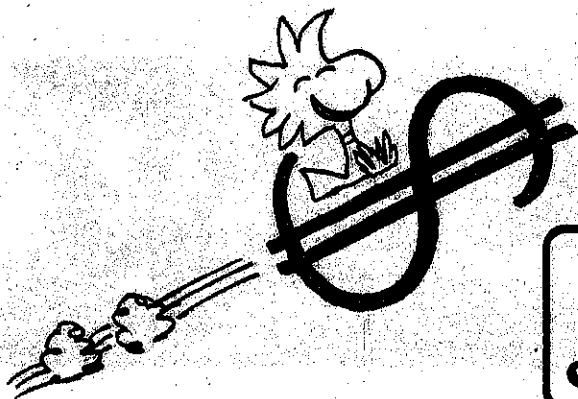
Both Willoughby and the Joint Northside Councils share this view.

Recognising the power of the lobby against us, members of our Freeway Committee spoke with the Total Environment Centre were considering making their own submission. T.E.C. are a body relying largely on voluntary help, and their attitudes on the Warringah Freeway accord with our own. However, lack of funds was preventing them from preparing a submission.

We agreed to make a donation to assist the T.E.C., and four of their most experienced officers have now produced a professionally competent document which powerfully supports our case. Our funds for this donation were raised by two street stalls and an approach for donations to those residents whose homes are directly affected by the freeway proposals.

My sincere thanks for the support, confidence and community spirit shown by so many of our residents enabling us to achieve this goal. This includes those who organised the stalls, those who provided the items for sale, and those residents who so generously made direct donations.

continued next page...



Your Xmas Dollars
goes further at....



The Quadrangle :: Telephone: 95 2196



PATON & ASSOCIATES PTY. LTD.

REAL ESTATE AGENTS, VALUERS & MARKETING CONSULTANTS

• 81 EDINBURGH ROAD, CASTLECRAG, 2068 - TEL. 958 1200

YOUR LARGEST LOCAL REAL ESTATE AGENCY

PHONE TERRY LAMBERT OR PETER MILLER FOR

- * The efficient and effective sale of your property
- * Obligation-free opinion of market value
- * Property management

ALDERMAN'S REPORT continued

COMMUNITY HALL / "530A" COMMITTEE

Fund raising in our Community is not a new phenomenon. By 1945 we had raised £680 (\$1360) towards a building fund to establish our Community Centre. Willoughby Council backed us pound for pound.

The land was cleared, drains laid and the hall started by volunteer groups of residents. Fund raising was stepped up. Many of these original residents are still around, thirty-five years older, of course.

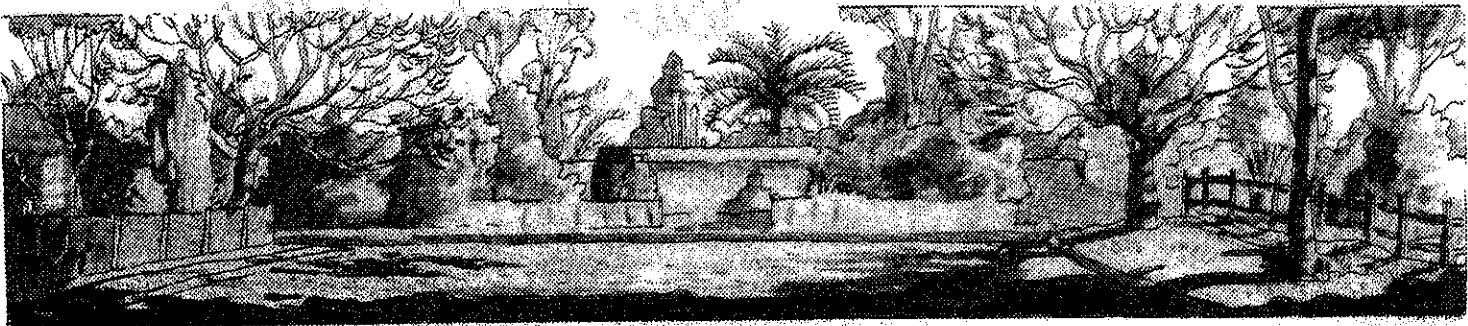
The original intention was to use the hall for community functions, as a kindergarten and as a library. From 1947 when it opened, until about 1960, it was very actively used for these purposes. In particular, community dances and meetings were well patronised.

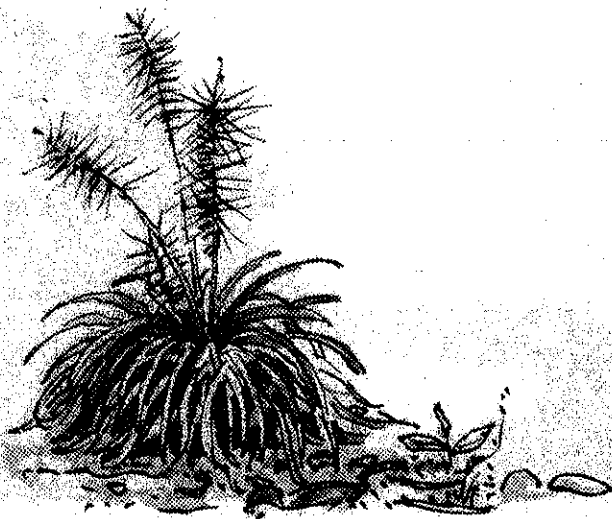
The library has continued its activities - the range of books has increased and it is very widely used. The kindergarten likewise is fully patronised. However, the building is seldom used these days as a Community Hall.

In 1965 the Castlecrag Community Centre was handed by the Community to Willoughby Council (as detailed in last issue of the Crag.) Council set up a Committee under section 530A of the Local Government Act, consisting of local residents, to manage the Centre.

The Committee members have changed over the years, and the present Committee feels that we should rekindle the original intentions of the Community and use the Centre once more for activities involving a wider group of residents.

continued next page...





FRENCH RESTAURANT

le' Crag.

Fully Licensed

122 Edinburgh Road, Castlecrag
(off The Postern, in front of the Squash Courts)

958 1357

first class French and Continental cuisine

Parties and Functions our Specialty

ALDERMAN'S REPORT, continued

The first of the new activities is a Bush Dance, a family affair, to be held on Saturday, 5th December, and the suburb has been circularised with notices advertising this. It is our earnest hope that this will be a great success and if so, will be followed by further such events.

My personal thanks to the organising Committee for their great work and to the 530A Committee for their support and imaginative thinking.

CULTURAL ACTIVITIES SPONSORED BY WILLOUGHBY COUNCIL

The Council nowadays is responsible for a wide range of activities other than "Roads, Rates & Rubbish." My first year as your representative leads me to believe that many people of Castlecrag don't fully avail themselves of the facilities which they subsidise.

YOUTH ACTIVITIES

A wide range of activities has been planned by our Community Services Co-Ordinator for young people during the Christmas Holiday period.

These include such things as films, a Roller Disco, Improved Reading and Study Courses, Woodies Drop-In Centre, and many other forms of entertainment for a wide range of ages. Pamphlets on these activities are available from the receptionist at Willoughby Council in the Chatswood Shopping Centre.

In our next newsletter I shall cover the Willoughby Orchestra, the Willoughby Band, and the Willoughby and Chatswood Musical Societies.

THE CRAG is edited on behalf of the Castlecrag Progress Association by Bob Ronai, 103 Edinburgh Road, Castlecrag, 2068, phone 95 4247.

Contributions, by way of articles on matters of interest to Castlecrag residents, are always most welcome. They can be mailed to, or left at, the Editor's address above.

NIGEL'S QUALITY MEATS

Griffin Centre
120 Edinburgh Rd, Castlecrag
Phone 95.0065

For
top quality & friendly service



HISTORY OF CASTLECRAG

Addie Saltis

CASTLECRAG KINDERGARTEN

Child minding and 'amateur' kindergartens, run on a roster basis by the mothers were always a part of pre-war Castlecrag life, but the nucleus of today's Kindergarten was in the home of Mr. & Mrs. Michael Stoker, "Bayview", at 223 Edinburgh Road.

(The Stokers played a unique part in Castlecrag's history. Up until the early 1960's they looked after Castlecrag's children when their parents were away. I know of one couple who boarded their pre-schoolers there for a week while they stayed at home and put their new house into order without distraction. And the children loved it!)

Anyhow, since informal pre-school groups broke up as soon as children reached school age, Mrs. Stoker offered part of her home as premises for an on-going Community Kindergarten to be run by the parents, and in 1943 the Castlecrag and East Willoughby Community Advancement Co-operative Society was formed to administer it.

Two Kindergarten Union trained teachers were appointed as staff. Fees were 4/- (40¢) per week, which included a hot lunch. Within three months, enrolments, which included tots from Northbridge, Willoughby and Chatswood, were over-loading existing facilities, and the Directors of the Co-operative decided to build. (See last issue of the Crag.)

continued next page...

CASTLECRAG CELLARS

122 EDINBURGH ROAD, CASTLECRAG

PH 95 2682 OR 958 1507

**DISCOUNT WINES
BEERS & SPIRITS**

PAULINE'S CRAFT

Shop 12, 100 Edinburgh Road
Castlecrag 2068

Pauline Rutten

Phone 95 4499
A.H. 93 2553



HISTORY OF CASTLECRAG

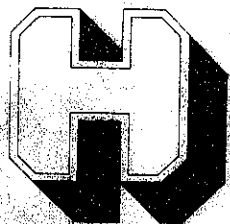
CASTLECRAG KINDERGARTEN continued

The present Kindergarten opened in 1947, catering for 41 children between two and six years, but by 1951 there were 127 on the waiting list. A Playground Project group was formed to cope with this overflow in the Cortielle Reserve (Tennis Courts). However, the opening of the Infants' School in 1952 caused a big drop in the waiting list and the project was abandoned.

The Kindergarten affiliated with the Kindergarten Union in 1954 and Miss Joan Dove was appointed Director in that year. I'm sure many mothers remember with affection her 20 years of dedication to our pre-schoolers.

Transport was a problem before two-car families became the norm. When at "Bayview" the teachers would meet the children at the Eastern Valley Way bus stop in the morning, and mums would pick them up in the afternoon. At the Community Centre a taxi service operated at a nominal price but this was discontinued in 1960.

Sewerage too, always was - and still is - a problem in Castlecrag, but imagine coping with unsewered sanitation for 23 children at "Bayview" and 41 in the Community Centre. No wonder there was such joy and jubilation in 1952 when the sewer was finally connected to the Community Centre.



Harvey World Travel

cnr. Eastern Valley Way & Edinburgh Road, Castlecrag 2068

Telephones : 95 5519 * 95 6203

Lic. No. B1181

ONE STOP TRAVEL SHOPPING

HOLIDAYS * BUSINESS * CRUISES * OVERSEAS * LOCAL
FULL PASSPORT & VISA SERVICE incl. Passport Photos

* OPEN THURSDAY NIGHTS & SATURDAY MORNINGS *

IT COSTS NO MORE TO BOOK WITH US!

33
OFFICE
NETWORK

THE BALLET STUDIO

SCHOOL OF CLASSICAL DANCE

CLASSES HELD AT THE CASTLECRAG
UNITING CHURCH HALL, CHARLES ST.

EXPERT CLASSICAL BALLET TUITION FOR
CHILDREN THROUGH TO ADVANCED STUDENTS.

DIRECTOR: PATRINA COATES
FORMER SOLO DANCER WITH
BOROVANSKY AND AUSTRALIAN
BALLET COMPANIES.

ENROL NOW FOR 1982...
... PHONE 95-5043

HEALTH SERVICES IN CASTLECRAG

For the benefit of Castlecrag residents,
we list the doctors and dentists who,
to the best of the Editor's knowledge,
operate practices in our immediate area:

Medical

Dr. Gavin Carney phone 958 1119
27 The Quadrangle, 100 Edinburgh Road

Dr. Glenn Mackintosh phone 95 1081
119 Eastern Valley Way

Dental

Dr. Barry Carolan phone 95 4557
105 Edinburgh Road

Dr. Jean Foley phone 95 6458
61 Edinburgh Road

CASTLECRAG MEATS

CNR RAEBURN AVENUE & EDINBURGH ROAD

TEL. 95-4274

* EXCELLENT SERVICE *

* TOP QUALITY MEATS *

* Bulk meat packed to *
* your requirements! *

+ Phone Orders 95-4274 +

FREE HOME DELIVERIES
TUESDAYS & SATURDAYS

CASTLECRAG LIBRARY

Located in the Castlecrag Community
Centre, off The Postern, the Library
is open during the following hours:

TUESDAY: 3.30PM TO 4.30PM

THURSDAY: 12.30PM TO 3.00PM

SATURDAY: 10.00AM TO 12.00 NOON





• CASTLECRAG STUDY •

NEWS SHEET

November '81

What's happening?

As you are no doubt aware Council in mid 1980 resolved to prepare a Local Environmental Plan for the Castlecrag Community Precinct. As a consequence of this resolution a public meeting was held in April following which a Resident Advisory Committee of eight was subsequently appointed by Council to prepare, in conjunction with Council's Town Planning Staff, a Local Environmental Study.

Your Advisory Committee has met regularly on a monthly basis since its establishment with Council's officers and its Liaison Officer, Alderman Eric Kaye. In addition to these monthly meetings, which you are welcome to attend, the Committee has held working group meetings in the intervening weeks.

Since the Committee's inaugural meeting a Study programme has been formulated involving the following topics :

- History of the precinct
- Physical environment
- Landscape and Visual analysis
- Open Space
- Built Environment
- Commercial Development
- Traffic
- Community Facilities and Population Characteristics
- Government and Statutory Authority Services
- Planning Objectives and Development Control Guidelines

To facilitate the completion of this comprehensive programme, the Committee has divided itself into a number of small study groups to investigate the identified topics. It is now anticipated that preliminary position papers on the identified topics, will be presented in the near future for discussion by the Committee and Council Officers.

For the assistance of the Advisory Committee, discussion papers have been prepared by Council's Town Planning staff in respect of the following matters:

- Existing open space provision
- Existing Planning and Subdivision Controls
- Castlecrag Shopping Centre
- Unsatisfactory form of development and criteria by which Council currently assesses development and subdivision applications.

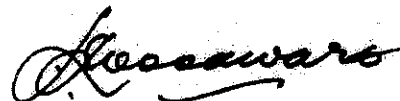
It is anticipated that this latter issue will be further discussed at the December meeting in conjunction with alternative mechanisms of control and criteria for assessment. It is proposed that following the finalisation of position papers your views on the various topics will be sought through this Newsletter culminating in an exhibition of study material and draft planning objectives and controls.

Council's Resident Advisory Committee currently comprises the following:

John Davies	Chairman
Ross Maclean	Deputy Chairman
Peter Armour	Research Officer
Eric Kaye	Council Liaison Officer
John Llewellyn	
Timothy Trumbull	
Edward Bowen	
Ann Korner	
Addie Saltis	

The next meeting of the Committee is scheduled to be held at 8pm on Wednesday, 9th December, at the Castlecrag Community Centre and is open for public attendance.

Should you have any comments to make in respect of the Study, please do not hesitate to attend, or should you be unable to attend, feel free to contact Council's Town Planning Department, or members of the Committee at any time.



L.J. WOODWARD
TOWN CLERK