

# NEWSLETTER OF THE CASTLECRAG PROGRESS ASSOCIATION

No. 20

SEPTEMBER/OCTOBER, 1981

## CASTLECRAG INFANTS' SCHOOL

*Alison Whittle (Principal)*

It has been a very busy and productive year which seems to be rapidly drawing to a close. The whole school recently went to Taronga Zoo where we visited the Education Centre before actually going into the Zoo. Since each grade has been studying different groups of animals, we only saw each other in passing! Kindergarten looked at animal coverings and general observation, Year One studied "land, water or tree?" while Year Two concentrated on "hands, feet, tails and beaks." Apart from catering for obvious age/interest levels, this also enables us to plan worthwhile yearly excursions to the Zoo.

By the time you are reading this, our Pictureplates will have been designed, we will have had a mobile farm-yard unit visit us in our own playground, and we'll be preparing for our Sports Afternoon. You may even have been asked to sponsor someone in our Spellathon for I.Y.O.D.P.

If you intend supporting Willoughby Council's Family Musical Afternoon (from 2pm, Sunday, 1st November, at Willoughby Park) you'll have the opportunity to hear Year Two play their discant recorders.

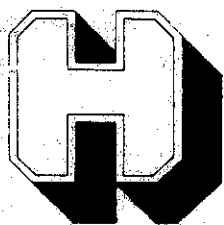
We hope to hold "Carols by Candlelight" early in December - so please check on details close to that time.

As you may have heard, we face a serious numbers problem in the next year or so. It would be a shame if this area was to lose its little "bush" school, so, if you know of anyone living in our area and with a child who turns 5 on or before 31.7.82 please encourage them to come and see me so that I know the numbers we can expect. (As I'm a teaching Principal, I would appreciate your calling before 9.30am or after 3pm.) Not everyone realises the necessity to complete an enrolment form at this early stage. Documentary evidence of date of birth (eg: child's birth certificate) must be sighted before an enrolment can be accepted.

Since it is also very helpful to predict future possible numbers, parents of younger children are welcome to come and add their names to our list.

.....

CASTLECRAG PROGRESS ASSOCIATION'S NEXT GENERAL MEETING WILL BE HELD ON TUESDAY EVENING, 8PM, OCTOBER 27, 1981, IN THE CASTLECRAG COMMUNITY CENTRE OFF THE POSTERN, CASTLECRAG. ALL RESIDENTS AND FRIENDS ARE WELCOME!



# Harvey World Travel

cnr. Eastern Valley Way & Edinburgh Road, Castlecrag 2068

Telephones : 95 5519 \* 95 6203

Lic. No. B1181

ONE STOP TRAVEL SHOPPING

HOLIDAYS \* BUSINESS \* CRUISES \* OVERSEAS \* LOCAL  
FULL PASSPORT & VISA SERVICE incl. Passport Photos

\* OPEN THURSDAY NIGHTS & SATURDAY MORNINGS \*

IT COSTS NO MORE TO BOOK WITH US!

33

OFFICE  
NETWORK

## RESIDENTS ADVISORY COMMITTEE

*John Llewellyn*

The Advisory Committee, as reported in the last newsletter, is working in co-operation with Council in the preparation of a Local Environment Study.

It is with regret however, that both Mrs. Di Street and Mr. Bob Ronai have had to tender their resignations due to external commitments. Mrs. Anne Korner has joined the Committee and a second appointment has yet to be made by Council.

A comprehensive checklist of topics for inclusion in the study has been drawn up. It is hoped that with such a firm basis future planning will be clearly understood and that rational design guidelines will minimise future conflict of interests.

The Council Planning staff are presently preparing position papers on various items for the Committee to respond to. The first paper being presented at last meeting with Council was on the Castlecrag Shopping Centre. It is hoped to discuss this at the next meeting on October 7.

A point of concern arises that while the Study is in preparation a number of unsympathetic developments can and are occurring. One such concern is the gradual replacement of the original stone kerbing. The unique qualities of much of Castlecrag's streetscape is due to the soft lines of the pavement edge, and careful consideration needs to be given to any harsh replacement by straight edges of sharp, usually dominant, concrete kerb and guttering. At the rate present development is occurring, the scenic and historic amenity of the area may be severely reduced by the time problems are identified and positive planning guidelines and controls can be implemented.

Meetings of the Advisory Committee are held on the first Wednesday of every month with the Council Planning staff at the Community Centre, 8pm. Come along, see what goes on and meet the Committee.

## CASTLECRAG LIBRARY

Located in the Castlecrag Community Centre, off The Postern, the Library is open during the following hours:

TUESDAY: 3.30PM TO 4.30PM

THURSDAY: 12.30PM TO 3.00PM

SATURDAY: 10.00AM TO 12.00 NOON



## HOUSE SITTING

EXPERIENCED HOUSE SITTER  
WITH CASTLECRAG REFERENCES  
WILL CARE FOR YOUR HOME,  
PLANTS, ETC, WHILE YOU ARE OVERSEAS/  
AWAY. FOR FURTHER INFORMATION, CONTACT  
ELIZABETH JOHNSTONE, c/- ARMOUR, THE  
SCARP ON 95 6498 OR (042) 29 2451.

**BUSHFIRE SEASON STARTS EARLY!**

The recent spate of hot, dry and windy conditions has led to an early onset of summer, and the threat of fire in our bushland reserves and foreshores.

We advise all residents adjoining bushland to contribute to the safety of their property by taking the simple precautions recommended by the Commonwealth Government in their pamphlet "Is Your Home Safe?"

In addition, we hope that bushland neighbours will be concerned enough about its well-being and value to the community to ensure that extra fuel-load is not contributed by garden refuse and weed infestation. If you feel you have a problem, members of the Castlecrag Conservation Society (in conjunction with the National Trust and the National Parks Assn.) will be pleased to visit your home to discuss selective hand-clearing along the perimeters of threatened properties.

Willoughby Council, following considerable pressure, has also agreed to consider supporting a programme of fire hazard reduction by selective hand-clearing rather than the ecologically damaging off-season burning recently undertaken in Castle Cove.

**ONCE UPON A TIME**

Blossom Hopkinson

Once Upon A Time there was no postal delivery in our neck of the Woods. In 1949, I found it a bit much to totter up the track toting a tot of two months, and thence up to the Post Office, to fetch mail from the absent householder (who was in England). Not long after a call to the P.M.G. an official came round with Doug Chandler and cast an eye over the situation. "Yes" he said we were deserving of a postal service. I enthusiastically started to erect a post on the edge of the road for a box. Doug and the official returned along the Bulwark, and seeing me struggling with the post (the wooden one) the P.M.G. bloke gave me a hand with it.

Thus started the Pony Express!

**PLAYREADING GROUP**

Castlecrag as a community for many years had a thriving PLAYREADING GROUP. This ceased to function about 15 years ago despite a continuing enthusiasm on the part of many.

I wonder if the community is ready to "give it another go"??

As a long-time Secretary and its last President, I invite all those who were previously interested, and all those newcomers to Castlecrag who may have participated in playreading before, or who never have but would like to, to attend a discussion on this matter at the Castlecrag Community Centre on Friday, October 30, at 7.45pm.

Ella M. Young  
95 4751



**FRENCH RESTAURANT**

**le'Crag.**

Fully Licensed

122 Edinburgh Road, Castlecrag  
(off The Postern, in front of the Squash Courts)

958 1357

*first class French and Continental cuisine*

*Parties and Functions our Specialty*

# CASTLECrag CELLARS

122 EDINBURGH ROAD, CASTLECrag

PH 95 2682 OR 958 1507



**ORLANDO  
CARRINGTON BRUT**

**\$3-75**

**\$8-95**



**\$9-98**



THESE EXTRA SPECIALS ONLY AVAILABLE ON PRESENTATION OF THIS ADVERTISEMENT

## ALDERMAN'S REPORT

*Ald. Eric Kaye (95 6146)*

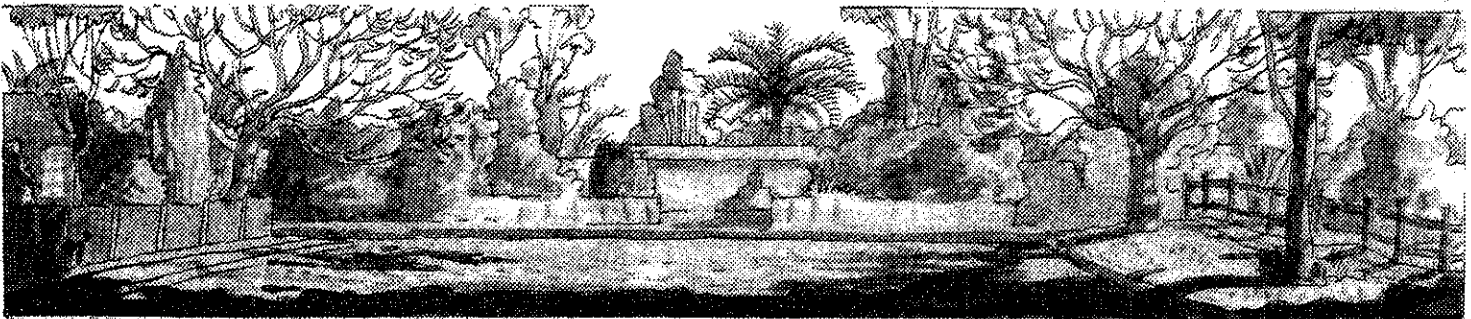
The Family Fun Fair held at Willoughby Park on Saturday, September 19, was an outstanding success. It was Willoughby's contribution to the 1981 Carnivale Festival. This is now an annual N.S.W. event, and the Fun Fair is jointly sponsored by Willoughby Council, the Premier's Dept., and the Community Arts Board. Sue Alvarez, the Council's Community Arts Officer was the Convenor and was ably assisted by a committee of 12. A total of 53 community groups participated, including Castlecrag Progress Association and our Conservation Society. Our Committee worked very hard to prepare our displays, and were generously supported by the residents. We raised \$860 towards our fight against the freeway, and I would like to thank everyone who assisted in this effort. I would recommend next year's fair to all our residents.

Septic Tanks: Renewed efforts are being made by Council to obtain a more satisfactory sewage disposal system than septic tanks for the unsewered areas of Castlecrag and Northbridge. I believe that we are getting closer to a reasonable solution to the problem and will speak further on this matter at the next Progress Association meeting.

Slow Burns: The trial controlled burn by the N.S.W. Board of Fire Commissioners was carried out in Castlecove during the last two weeks in August. The bushfire control officer has advised that hazard reduction operations ceased on September 1 "so as not to interfere with new spring growth, nesting birds and breeding animals."

The National Trust, the National Parks Association of N.S.W., the Castlecrag Conservation Society and many of our residents strongly oppose these burns. I have requested a copy of the data logged by Council officers before burning commenced, to enable us to evaluate the effect on these bushland areas, later in the summer season.

continued next page...





# Castlecrag Squash Centre

Cnr Edinburgh Rd & The Postern, Castlecrag 2068 ☐ Phone 95 5891

**BREAKFAST SQUASH**

6.00am to 9.00am

**LUNCHTIME SQUASH**

**SPA, SAUNA, SOLARIUM**

**BOOKINGS**

**95 5891**

## KEEP FIT — PLAY SQUASH

ALDERMAN'S REPORT, continued...

Castlecrag Urban Conservation Area: The recent decision by the National Trust of Australia that much of Castlecrag be given a CLASSIFIED listing in the Trust Register is very gratifying news. In the view of the Trust the area bounded by Edinburgh Road, Eastern Valley Way, Sailors Bay and Knight Place falls within the following definition:

*"Those places which are components of the natural or the cultural environment of Australia, that have aesthetic, historic, scientific or social significance or other special value for future generations, as well as for the present community."*

Listing by the Trust does not have legal force but is widely recognised as an authoritative statement on the significance of an area.

Included in the report is the following statement:

*"Too many of the series of internal reserves and paths have been absorbed into adjoining properties, or allowed to become overgrown with bush, or used for dumping trash. The more recent homes have been unsympathetic and in the process of grabbing a view, have disowned their sites and Griffin's intentions."*

These are matters that we must fully examine with a view to making the whole area as near as possible to the Castlecrag that Burley Griffin planned, and worthy of the honour bestowed upon it.

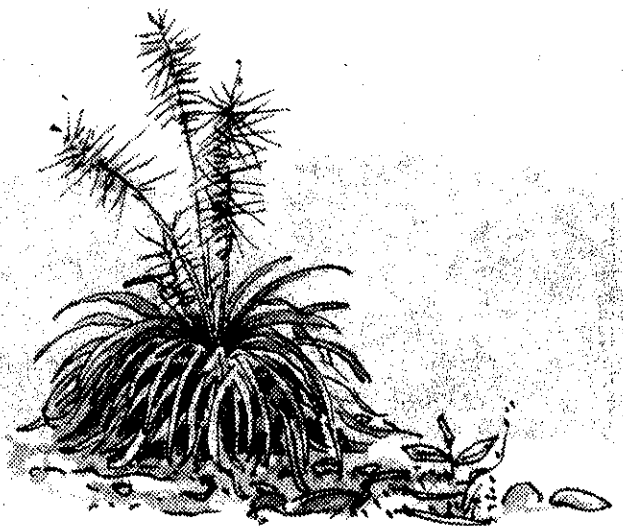
Our thanks go to Mrs. Di Street and the Castlecrag Heritage Committee for their work in bringing our suburb to the notice of the National Trust.

### **R.W'S MENSWEAR**

OPEN ALL DAY SATURDAYS

**QUADRANGLE — CASTLECRAG**

For Smart Clothing and Accessories.



## PRESIDENT'S REPORT

Galvin Thomas

Over the last couple of years the Castlecrag Progress Association has made representations to various authorities such as the Dept. of Main Roads, N.R.M.A., Willoughby Council, and the Police Dept. regarding the operations of the traffic lights at Eastern Valley Way and Edinburgh Road.

We have been endeavouring to have installed in the system a right-turn arrow into the Castlecrag shopping centre when coming from Northbridge along Eastern Valley Way.

Finally, after many words from the authorities claiming disruption to city-bound traffic, lack of need, etc., there has been a change of heart, and we need now only wait our turn in the D.M.R.'s list of priorities and funds.

The last two months have been relatively quiet and no major issues have been raised. However, there is the ongoing preparation of the Castlecrag Local Environment Plan. This Plan is being supervised by the Residents Advisory Committee selected by Council, and I urge all residents to co-operate with this group.

Residents may keep themselves informed by attending the monthly meetings of the Residents Advisory Committee on the first Wednesday of each month, at the Castlecrag Community Centre.

The Willoughby Council Community Fun Fair held on September 19 at Willoughby Park was a great success for the large crowd that attended. In addition to the many stalls of the various community and service groups there were many fun activities for the children. The Castlecrag Progress Association had several stalls all of which were well patronised. The Castlecrag Conservation Society's efforts attracted a particularly large crowd of interested people. Over eight hundred dollars was raised on the day, helping towards repaying our debt incurred in the preparation of our Warringah Transport Corridor submission to the Kirby Enquiry.

## CASTLECRAG MEATS

CNR RAEBURN AVENUE & EDINBURGH ROAD

TEL. 95-4274

\* EXCELLENT SERVICE \*

\* TOP QUALITY MEATS \*

\* Bulk meat packed to  
\* your requirements! \*

+ Phone Orders 95-4274 +

**FREE HOME DELIVERIES**  
**TUESDAYS & SATURDAYS**



## CASTLECRAG COMMUNITY CENTRE

The need for a Community Centre was suggested in 1943 when Castlecrag's Kindergarten, located in a private home, began bursting at the seams. (More about the Kindy next issue.)

The Castlecrag and East Willoughby Community Advancement Co-Operative Society Limited, formed to administer the Kindergarten, invited interested local organisations to its inaugural meeting. These included the Castlecrag Progress Association, Community Circle, Sports Club, Bridge Club and Playreaders. The meeting decided to look into the feasibility of erecting a building to house the Kindy and cater for other community activities as well.

Walter Burley Griffin had set aside several reserves in the Castlecrag Estate for community purposes, and transfer was arranged of the reserve in The Rampart to Willoughby Council (thus saving paying rates), with administrative control of the building and activities left in the hands of the Co-Operative Society.

Eric Nicholls, Griffin's partner, drew up plans for a Community Hall with attached Kindergarten, which could be built in stages.

The residents swung into action. Working parties cleared land, dug drains and foundations, built a shelter shed. Fund raising parties, dances and fetes were organised, and Willoughby Council agreed to subsidize the Building Fund, pound-for-pound.

Records show that the task was not easy. Its a story of patient struggle against legal delays, war-time shortages of labour and materials, apathy, indifference and vandalism. A precious £105 had to be spent on a Cyclone wire fence to protect the playground equipment originally intended for community use after school hours.

The nucleus hall was opened in November, 1947, with a musical evening and a dance. Fund raising continued. The building was extended and a library added, but the Kindergarten section and the auditorium never did get built. I guess the rapid population growth brought other needs and commitments with it. Community activities gradually declined and by 1965 upkeep of the hall was exceeding rentals. The Co-Operative was wound up and the building taken over by Willoughby Council. It is now administered by a Committee of residents appointed by Council under Section 530A of the Local Government Act.

The current 530A Committee is keen to see the Castlecrag Community Centre once again actively used by all manner of community groups.



**PATON & ASSOCIATES PTY. LTD.**  
REAL ESTATE AGENTS, VALUERS & MARKETING CONSULTANTS

• 81 EDINBURGH ROAD, CASTLECRAG, 2068 - TEL. 958 1200

YOUR LARGEST LOCAL REAL ESTATE AGENCY

PHONE TERRY LAMBERT OR PETER MILLER FOR

- \* The efficient and effective sale of your property
- \* Obligation-free opinion of market value
- \* Property management

# NIGEL'S QUALITY MEATS

Griffin Centre  
120 Edinburgh Rd, Castlecrag  
Phone 95 0065

For  
top quality & friendly service.

## PAULINE'S CRAFT

Shop 12, 100 Edinburgh Road  
Castlecrag 2068

Pauline Rutten

Phone 95 4499  
A.H. 93 2553

### HEALTH SERVICES IN CASTLECRAG

For the benefit of Castlecrag residents, we list the doctors and dentists who, to the best of the Editor's knowledge, operate practices in our immediate area:

#### Medical

Dr. Gavin Carney phone 958 1119  
27 The Quadrangle, 100 Edinburgh Road

Dr. Glenn Mackintosh phone 95 1081  
119 Eastern Valley Way

#### Dental

Dr. Barry Carolan phone 95 4557  
105 Edinburgh Road

Dr. Jean Foley phone 95 6458  
61 Edinburgh Road

Winners of the Raffle  
conducted by Castlecrag Progress  
Association and drawn at the Fun Fair:

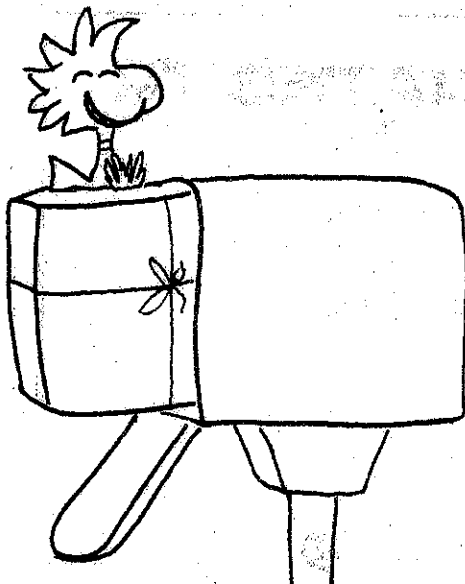
1st Judith Tester  
2nd Addie Saltis  
3rd M. Donnelly

Our grateful thanks to all those  
'Crag shopkeepers who donated  
so many items for prizes!!

THE CRAG is edited on behalf of the  
Castlecrag Progress Association by  
Bob Ronai, 103 Edinburgh Road,  
Castlecrag, 2068, phone 95 4247.

Contributions, by way of articles on  
matters of interest to Castlecrag  
residents, are always most welcome.  
They can be mailed to, or left at,  
the Editor's address above.

Printed by Ku-ring-gai Businessprint, 449-1174 and 95-5792



CASTLECRAG

# Chem-mart

The Quadrangle :: Telephone: 95 2196

for your Xmas gifts !!