

INSIDE THIS ISSUE:

- 2 Community Bytes
- 3 President's musings
- 4 Right hand turn at Eastern Valley Way
- 4 The Public Interest and Development Applications
- 5 From our Ward Councillor
- 5 Caroline Foldes photography
- 5 Haven Amphitheatre
- 6-7 The Fair and our Sponsors
- 8 Letters to the Editor
- 9 Rubbish, Rubbish, Rubbish
- 9 CPA Life Membership
- 10 Vale: Bridget Sabina Gilling
Vale: Ron Bowra
- 11 Council News
- 11 Call for Children's Books
- 11 Our day at the Fair, continued from page 1
- 12 Community Notice Board

OUR NEXT MEETING:

GENERAL MEETING

Tuesday, 25 August, 2009
7.30pm for 8.00pm

Open Forum:

Your chance to raise issues of concern with contributions from others on how these can be addressed.

YOU ARE WARMLY INVITED to the Community Centre, The Rampart (down laneway near intersection with The Postern).

Honouring Castlecrag residents

Two prominent Castlecrag residents, Robert Sheldon and Dr Ian Francis, received distinguished awards in the 2009 Queen's Birthday honours list. We extend our congratulations to them and their families. A profile of Robert Sheldon is presented below and that for Ian will follow in the next issue.



*Robert and Patricia celebrating Australia Day.
Photo: Khairy Farag*

Robert Stafford Sheldon, LFRAIA, Architect, has been appointed a Member of the Order of Australia (AM) in the General Division for service to architecture as a practitioner and administrator, through contributions to a range of professional organisations and to the community.

Robert, with his wife Patricia, and their young family, came to Castlecrag in the late 1960s, settling to live their new home, designed by Robert, in The Bulwark. He and Patricia have now been married 53 years and commenced their married life together with a three years honeymoon 'seeing the world' and working in London and Toronto.

Patricia, a keen drama teacher and actress, was the inspiration and driving force behind Robert's involvement in the design and reconstruction of Castlecrag's Haven Amphitheatre. The theatre had originally been established in the 1920s as the first community project of the newly emerging suburb under the leadership of Walter and Marion Griffin, and local sculptor and stonemason Bim Hilder. The theatre fell into disrepair over the years until a group of Castlecrag residents led by Addie Saltis and Beverly Blacklock cleared the site to stage plays. With only a small number of stones remaining Robert designed a 'theatre in the round' with a stage over the creek and had it ready for Oscar Wilde's *Salome* in 1976. Patricia played the lead role of Salome and went on to produce 'Carols by Candlelight' at the Haven for the next 21 years! Robert

received a Presidential Commendation from the NSW Chapter Royal Australian Institute of Architects (RAIA) for his design of the Haven Theatre. He was the first chairman of the Local Management Committee (now known as the Haven Committee) and has been a member of the Committee since its inception in 1976.

Robert was a practising architect and director of Robert Stafford Sheldon Architects, from 1964 to 1999 and was honoured with a Life Fellowship of the RAIA in 2002. He was a Foundation Fellow of the Institute of Arbitrators and Mediators, 1976, President of the Rotary Club of North Sydney, 1978-1979 (of which he was a member for 43 years) and a Paul Harris Fellow, Rotary International, 1994. Robert's initiatives through the Rotary Club of North Sydney relate to and include rehabilitating polio victims in PNG to become useful in their communities; providing funding for research into Myalgic Encephalomyelitis; and many other projects over the years.

Robert received 16 other architectural awards and recognitions over the years. His practice was general, including all types of housing, commercial buildings and shopping centres and he was a pioneer in the area of kit homes. Kit homes designed by Robert were sold throughout Australia. His practice also extended to Papua New Guinea where he designed a large factory in Lae, the Air Base for PNG Defence Forces at Port Moresby and medium density housing for expatriates on the hill above Port Moresby.

Jill Newton

Our day at the Fair

On a frigid May Sunday, the last before winter's finality truly set in, it was very tempting to settle in with a hot water bottle and a book. But then we remembered the Castlecrag Fair, and spirits rose high despite darkening skies. The Fair is one of many highlights on our social calendar, but it seems to bring our community together more than any other event.

Within minutes of arrival we'd exchanged greetings with locals who'd taught me Pilates, taught suburban sustainability (at Willoughby Council's excellent courses) and

Continued on Page 11

THE CRAG

is the community newsletter of the
Castlecrag Progress Association Inc.

PO Box 4259
Castlecrag NSW 2068

web page:
www.castlecrag.org.au

emails to the CPA:
info@castlecrag.org.au

Please send all correspondence and
membership renewals to the above address.

COMMITTEE 2008-2009

President Kate Westoby

Vice Presidents James Fitzpatrick
David Harrop

Secretary Jill Newton

Treasurer Diana Jones

Committee

Elizabeth Lander Warwick Lynch
Bob McKillop Howard Rubie
Maggie Scheller Lorna Sinac
Gay Spies OAM Bruce Wilson

THE CRAG

Editor Bob McKillop
9958 4516

Assistant Editor Margaret Chambers

email: editors@castlecrag.org.au
Letters to the Editor are welcome.

Design, Typesetting & Printing

Robin Phelan & Associates
0407 467 376
rocketdesign@bigpond.com

Community Bytes

Our business community

While we featured the contribution of our business community to the 2009 Castlecrag Community Fair elsewhere (see pages 6-7), the editors of *The Crag* wish extend their thanks to our local businesses for their fantastic contributions to this major event. We are conscious that business, and particularly small retail business, has experienced tough times of late, so the generous support extended to the Fair by our local business houses is greatly appreciated. We believe this has helped to bind our residents and the business community closer together and the Progress Association urges all readers to 'Think Local, Buy Local and Employ Local'.

The **Northbridge & Castlecrag Chamber of Commerce** has now been incorporated and is seeking membership of all businesses in the two suburbs. The Chamber seeks to raise the profile of local businesses, enhance the attractiveness of our shopping villages, create effective networking between members and provide a voice for local businesses with Council and the media. Please contact the Chamber secretary Howard Lardner on 0413 507 219 for information.

Council by-election 2 May

Our local Castlecrag candidate Gail Giles-Gidney was elected at the by-election for Sailors Bay Ward on 2 May 2009. Gail has been a Castlecrag resident for 13 years and has been active in local bush care groups and parents' groups at prominent schools. She campaigned on protecting our

unique heritage and natural environment, preserving public open space for use by recreational and sporting groups, addressing traffic safety and parking issues, and supporting appropriate development in terms of location and design. We extend our congratulations to Gail on her election. Gail has been active in a number of areas since the election and she reports on these in a column on page 5.

Diamond Wedding anniversary

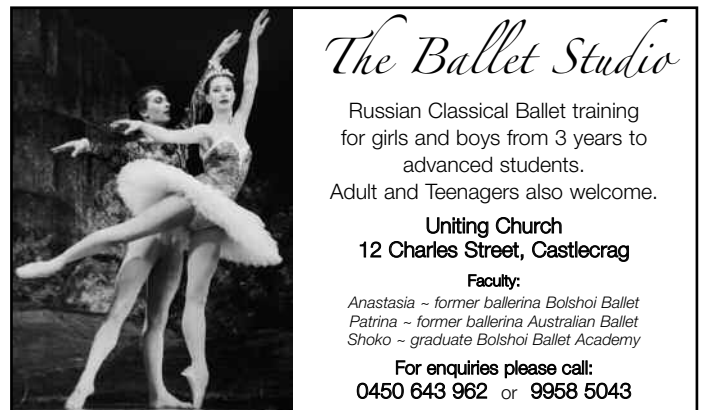
We extend our congratulations to Margaret and Bill Donnelley who celebrated their 60th or Diamond wedding anniversary in May. Since Margaret and Bill bought a block of land in The Bulwark in 1961, had a house built and moved in with their four young children in 1962, they have been loyal and active supporters of many local groups, in particular the Castlecrag Progress Association, the Castlecrag Conservation Society, the Castlecrag Play Reading Group and the Sydney Opera Society. In addition, Bill served on the 530A Committee, the precursor to the Haven Committee, for 17 years. We wish them many more happy years in Castlecrag.

'Walter' and 'Marion' return

Adding to our report in *The Crag* 171 (p. 2), the restoration work on the gigantic puppets of Walter and Marion Griffin has been completed and they are scheduled to make a public appearance at the head of the parade during the Willoughby Street Fair on Saturday 12 September. The Haven Amphitheatre is looking for volunteers interested in being trained as puppeteers for this and other events. Please contact Lindy Batterham on 9958 2127 or 0424 958 515.



castlecragdental
99584557
Dr Alex Dong & Dr Winnie Li
105 Edinburgh Road



The Ballet Studio
Russian Classical Ballet training
for girls and boys from 3 years to
advanced students.
Adult and Teenagers also welcome.
Uniting Church
12 Charles Street, Castlecrag
Faculty:
Anastasia ~ former ballerina Bolshoi Ballet
Patrina ~ former ballerina Australian Ballet
Shoko ~ graduate Bolshoi Ballet Academy
For enquiries please call:
0450 643 962 or 9958 5043



United Willoughby
Your local service station
Cnr Mowbray & Willoughby Roads
Phone: 9958 5896
9958 6320
Manager John Manoukian
Mechanical repairs to all makes & models
Authorised RTA Inspection station
Log Book servicing
Air condition service & repairs
Mazda Rotary Engine specialist
Performance & Turbo Charging
Tyres - Steering - Suspension - Brake - Clutch
NRMA Approved Repairer



ECO Boats
Electric Boat Hire
Great Winter Special!
details & bookings:
ecoboats.com.au
Phone 9929 8834
Sales & Hire Location:
Northbridge Marina

Community Bytes cont...

Sydney Buses

The new bus network for the Northern Beaches and the Lower North Shore commenced on Sunday 2 August. It seeks to make routes more direct and to provide new services to meet growing demand. There are no changes to the 203 and 205-210 bus routes or timetables. As regular users will be aware, however, the extension of PrePay Only buses to peak hour express services on these routes and the requirement for PrePay Only on all buses from Wynyard during week days has meant that travellers need to have pre-pay cards available. Please note that you can purchase your pre-paid bus tickets at the **Castlecrag Chemist** in The Quadrangle.

Castlecrag Local Plant Guide

The Castlecrag Progress Association (CPA) has now distributed its newly published Castlecrag Local Plant Guide to all households in Castlecrag (*The Crag* 171, p.8). Should you not have received your Guide please contact the CPA at info@castlecrag.org.au or PO Box 4259 Castlecrag NSW 2068.

As the most significant aspect in the continuing conservation of Castlecrag is maintaining the predominance of the natural landscape over the built form, the purpose of this guide is to help Castlecrag residents grow those plants selected from our area in their gardens so that their gardens are in harmony with the local natural landscape.

The guide lists several nurseries that specialise in native plant tube stock (tube stock being recommended as best for establishing strong conditioned growth). These nurseries will also grow plants to order. While they will not stock all the plants at any one time, the greater the demand for these plants, the more we believe these nurseries will be encouraged to broaden the range of plants they propagate.

You may also wish to encourage WCC (and lobby our ward councillors to assist you with this) to establish its own nursery to specialise in local indigenous plants that are propagated using local seeds and cuttings collected from the Castlecrag area. A number of our neighbouring Councils such as Kuringai and Lane Cove have their own nurseries and we see no good reason why WCC should be deficient in this regard.

President's musings



I was elected as President at the annual general meeting of the Castlecrag Progress Association on 29 April. I previously served in this role from 2001 to 2003, so

I have agreed to take on this position again for one year only, as I have served on the CPA committee since the early 1980s and it is time for me to take a new direction. I have recently had the joy of the arrival of my first grandchild and family will be taking more of my time. I also plan to commence studies for an MA in Children's Literature, which will also be time demanding.

I take up this role in the large footsteps of our past-President Bruce Wilson, who has given new drive and direction to the Progress Association over the past two years. He brought tremendous enthusiasm and a remarkable community network to this role that have helped to lift the profile of our community. Many thanks Bruce.

I wish to express my thanks to our mayor, Pat Reilly, who provided the audience with an overview of issues and challenges before Council. Pat congratulated the President on his excellent President's report and brought up their common cause in the fight to 'save the school' in Castlecrag. He added that the Castlecrag Progress Association has been a leader among community groups in respect to comment and guidance on local government policies, including its recent contributions on the new Willoughby LEP.

We were also delighted that Diana Jones, our long-standing Treasurer, was awarded a much deserved Life Membership of the CPA at the AGM. Diana has quietly and efficiently handled this position for over 20 years. Several new committee members were elected at the AGM and I extend a warm welcome to Warwick Lynch, Maggie Scheller and Lorna Sinac. All organisations need 'fresh blood, and it is pleasing to see new faces becoming involved in our community. James Fitzpatrick was elected as Vice-President and David Harrop continues to hold the other Vice-President

position. In his outgoing President's Report, Bruce Wilson made special mention of Jill Newton's contribution as Secretary (see Castlecrag website). She has played a proactive role in linking community and Council.

The Castlecrag Community Fair was initiated to help bring our community together after the disruption arising from the closure of our school and to provide a venue for all our community organisations to promote themselves and, as appropriate, to raise funds for their ongoing operations. Despite the disruption of rain, this year's Fair was a huge success with excellent crowds and it served its purpose of bringing community and business together. The Progress Association underwrites the Fair and takes the financial risk of failure due to weather or other causes. Fortunately, due largely to the support of our business houses, we were able to make an overall profit of \$4738 from this year's Fair. This has been added to the accumulated funds from past fairs and the CPA Committee is exploring a suitable community project(s) to be supported by these funds. Our financial support to the Castlecrag Local Plant Guide is an example of our support for such projects. On that subject, the Committee and I have received very positive feed-back on the quality and usefulness of the Guide.

The effort to organise the biennial Fair is a huge one. This year a sub-committee of Simone Selby, Lorna Sinac, Jill Newton, John Steel and myself took on the task. I particularly wish to thank Simone and Lorna for their tremendous effort in making it all happen.

Traffic is an ongoing issue for our suburb and Maggie Scheller has taken up this issue on behalf of the CPA Committee. I also express my congratulations to Gail Giles-Gidney on her election as our Ward Councillor at the recent by-election. Gail is a local Castlecrag resident and has also been active in addressing our key traffic concerns. They report on these matters on page 4.

I invite all residents to attend our next General Meeting on Tuesday 25 August which will be an Open Forum for residents to raise issues of concern for discussion and to gain your contributions as to how they can best be addressed (see page 1).

Kate Westoby

Castlecrag Progress Association Inc. Membership Form

ANNUAL SUBSCRIPTION FOR 2009

I wish to renew / apply for membership for the CPA Inc., and enclose payment of: \$
(*\$10 per person, \$5 per student*)

If you wish to make a donation, this will be most welcome. I enclose my donation of: \$

Name:

Address:

Phone: Email:

Please post to the Treasurer:

PO Box 4259
Castlecrag 2068

Queries to:
info@castlecrag.org.au

Right-hand turn at Eastern Valley Way

A meeting was held at Willoughby Council on 1 July 2009 to discuss the long-standing issue of a right-hand turn arrow at the lights on the Edinburgh Road-Eastern Valley Way intersection (*The Crag* 170, p.5). Attendants were Sailor's Bay Ward Councillors Gail Giles-Gidney (chair) and Adrian Cox; Gladys Berejiklian MP, State Member for Willoughby; and Stephen Head, Infrastructure Services Director at WCC; as well as members of the Castlecrag Progress Association (CPA). The purpose of the meeting was to bring together interested parties to discuss an action plan.

In response to pressure from local residents, the CPA has been trying to implement a right-hand turn arrow at this intersection for some 30 years. The difficulty for vehicles exiting Castlecrag to travel north at this intersection and the increased number of accidents occurring as a result of this have formed the basis for submissions for a right-hand turn arrow over the years. Unfortunately the Roads & Traffic Authority (RTA) has not been supportive, because their main concern is not slowing down traffic along Eastern Valley Way, particularly during peak hours.

Now a new attempt will be started as outlined in Gail Giles-Gidney's report (page 5). An assessment was done by Council engineers which showed that many cars proceed further along Edinburgh Road and then turn right into 3rd or 4th Avenue. During peak hours these vehicles have to wait for oncoming traffic, blocking traffic behind them. This undermines the claims of the RTA that a right-hand turn arrow at Edinburgh Road would slow traffic on Eastern Valley Way: its stance simply moves the problem around the corner.

Gladys Berejiklian has written to the Minister of Transport to explain the difficult situation at the intersection and will try to arrange a meeting with local community leaders. The CPA supports strongly this new approach and the possibility exists that support from the residents may be needed. We will keep everyone posted about the latest status.

Maggie Scheller

The public interest and development applications

The Castlecrag Progress Association sees it as important to protect the qualities of Castlecrag that make it special, and potentially attracted you as a resident in the first place. The Committee of the CPA has the opportunity to view and comment on all development applications (DAs) for proposed works within Castlecrag. Our assessment is based on the DA policy which is available on our website as the framework for this process.

A significant number of DAs do not require comment, and some we actively support by writing letters of commendation to Willoughby City Council. On several recent occasions we have also worked with the applicant to achieve a positive outcome, and then, if appropriate, have supported the DA before council. Unfortunately, a large number of DAs are seen to have issues that relate to excessive height and bulk, unclear representation of the proposal and/or poor design outcome. Often all three occur in one!

Unknown to most, we also take a proactive role in lobbying council to amend or develop its policies to assist in achieving these positive outcomes. To this end, the CPA Committee has developed a Height Pole Policy and a Montage Policy, both of which have been presented to the Director of Environmental Services at Willoughby City Council for consideration and potential inclusion in the DA submission requirements.

The height pole policy sets out a standard way that applicants would mark out their proposal on site for council and interested parties to see. It defines the method of construction, certification and linking of these poles such that a lay person would be able to clearly understand the proposed height and bulk of any development. The montage policy simply sets a standard way that applicants would submit an artist's impressions of their proposal from key defined positions. These again assist in the assessment of the DA, clearly showing the impact of the development in its context.

Both policies can be a positive step in

assisting council and the community in understanding any development proposal, as they remove any subjective or interpretative opinions based on two-dimensional elevations and plans.

Another initiative, arising from comments made by members of the community, is an educational opportunity that will introduce residents to appropriate design professionals with whom they can then work to achieve their own goals in a way that adds value to our sensitive environment.

This CPA programme will include presentations by some of Sydney leading architectural practices, young and emerging practices and local practices. These architects will be chosen for the quality of their work and their understanding of siting buildings in complex environments, as we have in Castlecrag. Many will have already completed work in Castlecrag.

These presentations will be an opportunity for interested parties to come along and see the work of these practices, meet the designers afterwards, and if appropriate, make a time for a further discussion. Details of these information nights will be published in *The Crag* later in the year. This will be a RSVP event only.

Please register your interest by sending an email to: info@castlecrag.org.au

Should you be considering building or renovating in Castlecrag, another enjoyable family way to understand the rich architectural, historical and environmental context of Castlecrag is to take a walking tour of the suburb.

The Australian Architectural Association holds regular tours hosted by one or our resident architects (see page 8), as does the Walter Burley Griffin Society.

Information is available at their respective websites: www.architecture.org.au and www.griffinsociety.org

**Committee of the
Castlecrag Progress Association**

Burleys

Breakfast + Lunch

from 8am to 5pm • 9958 8441

Pizzas from 5pm

Eat In • Takeaway • Delivery • 9958 3177

Shop 5 The Quadrangle 100 Edinburgh Road

LILYPILLY
indigenous landscapes



Native Flowering Gardens

Low Maintenance
Water Wise & Friendly
Sandstone Walls, Paving & Features
Large or Small Projects

**Design, Landscaping
and Maintenance**

**Richard Blacklock
0417 217 937**

From our Ward Councillor



Editor: *As noted elsewhere, Gail Giles-Gidney was elected to Council at the Sailors Bay Ward by-election on 2 May. We welcome her with this contribution to The Crag on her initial work on*

our behalf. We will be inviting our other Ward Councillors to make similar contributions in forthcoming issues.

Running the gauntlet is a medieval punishment, compelling individuals to run between two rows—gauntlet—of bludgeon-wielding soldiers ready to strike. In 2009, we have a gauntlet at 'the crossroads at the Crag'. Most drivers turning north from Edinburgh Road on to the main arterial Eastern Valley Way run a high risk of being hit. And the one thing they all want is to get rid of the gauntlet.

Although we have seen exponential through-traffic growth since Flat Rock Drive became an alternate route to the city, the traffic light system at the crossroads has not kept up with demands. Were the RTA designing a system for today's flows we would see four-way filters to and from Eastern Valley Way, which is what we need—and before 2010.

Over the past 20 years, repeated documented requests presented to the RTA for a safer system have failed to achieve change. The RTA just trots out their favourite catch all policy of not wishing to cause delays to peak traffic on the main arterial road. So far, we have been lucky running the gauntlet—but it is only a matter of time and traffic flows before we have several severe hits, even fatalities.

For the first time we are presenting a united approach to get action. Gladys

Berejiklian is seeking a meeting with the Minister for Transport, and Steven Head from Council is deeply involved. Your Ward Councillors are looking for action and I am calling for significant resident involvement to get rid of the gauntlet.

It is time to take off the gloves. Can Castlecrag residents prod the RTA into action? If you think you can help, register your interest, I would like to hear from you.

Castlecrag is unique and my unique challenge is to represent all local residents with local and the broader issues, including such diverse matters as the review of the Willoughby Leisure Centre and associated sporting facilities, related parking issues and, installation of suicide-prevention fencing on the Suspension Bridge in Northbridge.

The DA process is an issue that affect local residents. Our heritage and environment demand protection and, we must accommodate the needs of growing families who want to breathe new life into our suburb. Local businesses and shopkeepers too need to grow and prosper. It is important that everyone has a fair go to maximise their potential in and for the community.

As your Ward Councillor, I have a keen interest in representing all your views and, Council relies on resident feedback to make changes.

Please call me with your concerns or interests on 0438 633 587, email me at Gail.Giles-Gidney@Willoughby.nsw.gov.au and, please read my blog on www.gailgg.com.au.

Help me make real progress for the Crag.

Gail Giles-Gidney

Caroline Foldes photography

You may have noticed the stunning photographs in previous editions of *The Crag* accompanying reviews of plays at the Haven Amphitheatre, namely the photographs depicting *Cosi* at the Haven (*The Crag* 171, April 2009) and *Wind in the Willows* (*The Crag* 167, April 2008). The photographer was Caroline Foldes and we thank her for the use of her photographs in these articles.

Caroline is a committee member of the Haven Amphitheatre and until recently a resident of Castlecrag where she has lived for most of her life. She obtained her BFA Hons, (majoring in Film and Video), from The College of Fine Arts, University of New South Wales in 1997. She studied photography at The Australian Centre for Photography and the Sydney College of the Arts, University of Sydney, completing her Masters in Documentary Photography at the SCA in 2007.

For further information and other samples of Caroline's work please email Caroline at caroline@sacred.net.au or visit her website www.sacred.net.au/about/index/html

Haven amphitheatre

The Haven Amphitheatre committee are pleased to announce the return of the Epicentre Theatre Company with a special presentation of *Don Quixote*. People sometimes go in Quest of one thing and meet with another. Madman or hopeless dreamer? The knight of the rueful countenance is back with this modern adaptation of the 17th century classic. In the face of an unpromising future, a man takes his life into his own hands and decides to create his reality. The fine line between Reality and illusion is about to get very blurred!! The production has been specially written for the Haven Amphitheatre by Judith Bedard. Performances Dates: 27, 28 and 29 November and 4, 5 and 6 December. For further information visit our web site at www.the.haven.biz See you there.



Roger Page
FIRST NATIONAL REAL ESTATE

We put you first.

PROPERTY SALES / MANAGEMENT / AUCTIONS



Roger Page



Dianne Page



Dierdre Kelly



Siobhan Buchan

9958 0124

www.rogerpage.com.au

Sales Appraisals • Property Sales • Property Auctions • Rental Appraisals • Lettings • Full Management Service

The Fair: what we achieved

The Castlecrag Progress Association expresses its thanks to all those who contributed to the success of the 2009 Castlecrag Community Fair, and particularly the organising committee comprising Simone Selby, Lorna Sinac, John Steel, Jill Newton and Kate Westoby; our sponsors; Willoughby City Council and the many community groups who participated on the day.

Thanks to the active lobbying by Lorna Sinac, our local businesses were most

generous in supporting the Community Fair. In all, they contributed \$5628 in sponsorship donations and gifts for the raffles to the value of \$3650. We express our sincere thanks to all our sponsors for helping make this Fair so successful and the Progress Association will be writing to all the following 2009 Fair sponsors to acknowledge their contribution.

With this generous support and despite the unkind weather and a sharp rain shower that dampened the grounds and spirits,

there was a net profit on the Fair of \$4738.56. This amount has been credited to the Progress Association's Community Fair account, and will be used to support a mutually agreed community project or projects. In addition, the Progress Association's 'Trash 'n Treasure' staff raised \$2635.40, which will be used to support our operations over the next two years, including the publication and distribution of *The Crag* newsletter.

Editors

Special thanks to our MAJOR SPONSORS:



sandberg schoffel architects



Above: Peter Moffitt manning the CPA 'Trash 'n Treasure' stall at the Fair. Photo: Peter Hitchcock



Above: CPA Committee members Maggie Scheller and Diana Jones were busy selling raffle tickets during the Fair.



Above: The Community Fair organiser Simone Selby with Ward Councillors John Hooper and Gail Giles-Gidney.





gourmet source

Fine Food Delicatessen

Shop 20/22, 100 Edinburgh Road, Castlecrag

Now offering home delivery Monday & Friday

Open 7 Days

PH 9958 0747 www.gourmetsource.com.au



ROMANO'S

Licensed Italian Restaurant

OPEN: Lunch Wed-Fri 12noon-3pm Dinner Mon-Sat 6-10pm

Tel: 9958 6122

www.romanositalianrestaurant.com.au

2 The Griffin Centre, 122 Edinburgh Road, Castlecrag



Above: Ian Goldfinch and his team from Sydney Butcher Boys cook up some more prize sausages during the Fair.



Above: Geoff Sherington and Adrienne Kabos were kept busy at the Walter Burley Griffin Society stall.



Above: Linda Cardew manned Willoughby City Council's Cultural Events staff and answered queries on the Civic Place project.



Above: The raffle draws were conducted under difficult conditions: Cr Hooper draws a ticket under watchful eyes.

Opposite Page:

Below left: Willoughby Council's Open Space stall offered an informative range of information on our natural environment.

Below right: Enthusiastic bands kept the large crowds entertained throughout the day

Photos: Bob McKillop

And thanks to all our other generous supporters:

PLATINUM SPONSORS

Castlecrag Cellars
Castlecrag Meats
Haven Amphitheatre
Mattana Coiffure
Revive Health & Fitness Centre
Sydney Butcher Boys
Yours Beautifully

GOLD SPONSORS

Bai Yok
Castlecrag Pharmacy
Castlecrag Post Office Shop
Clipso Hairdressing
LJ Hooker Castlecrag
Pam's Cafe
Richardson & Wrench
Serin Cini
Travelplan

SILVER SPONSORS

Castlecrag Fruiterers
Ganache Patisserie Francaise
Georgina Hart
Jack Green Energy
Martha's
Oven Fairy
Rodney Clark
United Willoughby Service Centre
Vald'arno

As well as:

Burleys, Castlecrag Marine, Castlecrag Char Grilled Chicken, Coles Castlecrag, Flavours of Peking, Galleria Boutique, Jodie McGregor Flowers and Simon Johson.

LETTERS to the Editor

Traffic and Parking

Bob McKillop's recent Traffic and Parking update (*The Crag* No.171 April 2009) is very instructive on the current dilemmas facing the management of motor vehicles in Willoughby City. Essentially the questions relate to residents' right to park as well as the flow of traffic through the city.

Bob points out that some residents have been fined for 'parking on nature strips'. As someone who has received a 'warning' on this matter, I suspect that most of these cases were for parking on the driveways that residents have created with Council approval for access to their residences. What Bob does not point out is that such fines are for 'stopping' on driveways – supposedly therefore one can be fined under RTA rules administered by Council officers for even stopping a vehicle and getting out to open a gate. Quite rightly Bob indicates that this is not a specific Council regulation, but Australian Road Rule 197 and that it is the 'responsibility of drivers to know and observe the rules'. In our current complex democracy it is my understanding that governments (including local councils) have a responsibility to inform citizens of their rights and responsibilities. For instance all of us are subject to the current Tax Act, but how many of you have sat down to read it? I am therefore glad to learn that the Council and RTA are now to engage in a campaign given the 'apparent ignorance of the law by many motorists and residents'.

But will such a campaign solve the problem of parking on driveways and verges by simply imposing a blanket ban? Bob McKillop claims that Rule 197 was introduced to 'enhance the safety of pedestrians, cyclist and motorists by maintaining good sight lines'. There is also the question of maintaining the verge itself. Few of us would disagree with the general tenor of those propositions. But what is the reality of living with them as a resident in Willoughby? For instance, I have just moved from The Bulwark Castlecrag where there were virtually no verges to Edinburgh Road Willoughby where I am on a corner block with verges. As with most other residents in my street I maintain such verges at my expense (has Council ever done this?). But the verges are also very

wide in my street and thus cars parked in driveways do not intrude onto the footpath (as a constant pedestrian I can vouch for that). As to good sight lines if cars parked in driveways are moved into what is now a narrow street, due to earlier Council changes, then lines of sight will become more difficult.

Universal principles are thus significant but so too is recognition of the history and heritage of an area. For instance most of the housing stock in East and North Willoughby was built just after the First World War without provision for car space. The area, quite rightly, is now listed as part of the heritage of Willoughby. Some houses are able to add one car space under regulations; few have more than that. These days most residences have two cars. Some older residents might say 'sell at least one of the cars and catch the bus'. Tell that to a mother managing household affairs, work and child care.

The question of parking on driveways is only one of the issues for Council to consider. What lies behind the enforcement of traffic regulations in our municipality is the role of the RTA which is still seeking to manage flow across the harbour. But as Willoughby Council recognises, forcing more residents' cars onto streets to compete with commuters' cars is not the answer. I trust the Councillors at least will consult residents on the question of parking on driveways and related matters before embarking on an 'education campaign' followed by possible fines.

Geoffrey Sherington
Edinburgh Road

Editor:

As I pointed out in The Crag 167, the matters under discussion relate to Australian Road Rule 197, which applies across the country. Local councils do not have the option to 'consult' before enforcing. Willoughby City Council states that its Parking Officers are reasonable people in exercising their duties, but they must issue infringements in accordance with the law, even if in their view a vehicle is not causing any obstruction or blocking visibility. The law allows for vehicles to stop in a driveway to pick up

or drop off passengers and we have been advised by Council that it would interpret a driver stopping in a driveway to open a gate as acting within this provision.

Getting to know Castlecrag

For those who have a curiosity about the history and architecture of the Castlecrag area, they may be interested to know that there are regular architectural walking tours organised through the Australian Architecture Association, conducted by a local architect Ben Gerstel. Having recently been involved with our own architectural design process in the area, we found these walks proved fascinating, and Ben Gerstel's understanding and explanations of the various architectural styles was excellent.

Ben has the ability to really draw you in to the world of architecture and show off some fine examples of architectural works. For those who are considering renovating or building I highly recommend these walks with Ben, because he puts into perspective the various styles and design opportunities that are available, and his insights allow you to develop an understanding and a level of confidence of what can be achieved in our unique local area. The Australian Architecture Association's website is at www.architecture.org.au and go to 'Sydney Walks'.

Stephen Richardson
Edinburgh Road

Editor:

The three walks led by Ben Gerstel are:

1. *Covering the Griffin Conservation Area, some Griffin and Eric Nicholls houses, as well as transversing some of the walkways that are an essential element of Griffin's landscape design for the suburb.*
2. *Exploring the contemporary architecture at the eastern end of the suburb as well as the Hugh Buhrich houses.*
3. *Middle Cove walk, highlighting designs by Neville Gruzman and Bruce Rickard among others.*

momo INTERIORS

INTERIOR DESIGN COLOUR CONSULTATION
BLINDS, CURTAINS & FURNISHINGS

9958 6672

oven fairy

MAGICALLY CLEANS OVENS & BBQS

9967 8733

79 EDINBURGH ROAD, CASTLECRAG

BEN GERSTEL ARCHITECTURE PTY LTD

bgerstel@optusnet.com.au

Phone: 9967 0640

www.hipages.com.au/professional/13981

Ben Gerstel Architecture provides exciting and creative design solutions for your renovations or new house, backed by a thorough knowledge of Willoughby City Council requirements.

Ben is also a volunteer tour guide for the Australian Architecture Association.

RUBBISH, RUBBISH, RUBBISH – Part 1

What happens to our rubbish? I have taken part in several tours arranged by Willoughby City Council's (WCC) Waste Management Section to find out and I recommend that other residents participate in future tours. As Australians, we are the second highest producers of waste per capita in the world and I believe that we should all attempt to reduce our impact.

Below is a summary of current WCC practice:

MAIN GENERAL BINS

Half of the material collected within WCC's jurisdiction is transferred to Eastern Creek Waste and Recycling Centre (ECWRC) for landfill. The remaining half is sent under contract, at additional cost, to the Alternative Waste Facility (AWT) also at Eastern Creek—the UR-3R facility (Urban Resource—Reduction, Recovery and Recycling). Here recyclable material is removed and sorted by a combination of machine and manual sorting, and the residue sent to landfill. The recycling sorting option was initiated by WCC as a trial and, although a more expensive solution than 100% landfill, proved so popular that Council attempted to extend its contract to include all general material. Unfortunately in the meantime all available recycling capacity had been taken up by other councils.

At the Eastern Creek landfill methane gas is removed from under landfill heaps, converted to electricity and fed into the grid. Likewise water used in the process is recycled for onsite use.

GREEN BINS

Garden waste collected by contract in these bins is sent to Australian Native Landscapes at Ryde to be forwarded to composting facilities at Eastern Creek and processed into re-useable garden products ('Garden-to-Garden' logo products have come from this process).

RECYCLING (YELLOW LID) BINS

Waste collected for recycling is sent to the Materials Recycling Facility [MRF], the VISY facility at Smithfield, for processing. Treatment here is very similar to that at the MRF at Chullora Waste and Recycling Centre which we visited recently as there is no education centre at Smithfield.

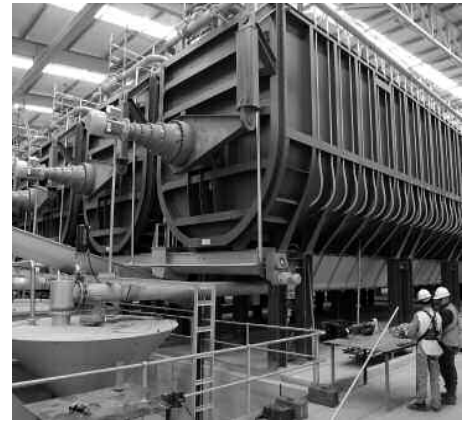
QUARTERLY KERBSIDE COLLECTIONS

These collections are made by contractors. All material from the General Clean-ups is sent for landfill. Material from the Metals Collection is recycled and the Bulk Vegetation Collection is used for mulch and compost.

ARTARMON TRANSFER STATION AT LANCELEY PLACE OR EASTERN CREEK WASTE MANAGEMENT CENTRE

Residents are able to deposit, free of charge, certain recyclable items such as metal, cardboard and paper (large plastic items and wood are only received free at Eastern Creek but a fee is levied for their deposit at Artarmon).

Other items such as paint, mattresses, batteries, sump oil may be deposited for a charge.



Percolators at WSN recycling centre.
Photo: WSN Environmental Solutions

Quantities of mixed rubbish, for example trailer loads, may be deposited for landfill at a charge levied by weight.

For news of future tours go to the WCC website: <http://www.willoughby.nsw.gov.au> Tours are arranged by the Waste Education Officer, Tejinder Gill. Buses leaving from the Dougherty Centre, 7 Victor Street, are free, but bookings are essential (9777 7730); enclosed flat shoes and full length trousers should be worn. The next planned tours are to the MRF at Chullora Waste and Recycling Centre on Monday 21 September 2009, 8:30am–12:30pm and to the Eastern Creek AWT on Monday 9 November, 8.30am–1pm. Highly recommended!

Margaret Chambers

Watch out for Part 2 – RECYCLABLES in The Crag No.173, October 2009

design
typesetting
printing

rocket  design

robin phelan

0407 467 376

rocketdesign@bigpond.com

Martha's

breakfast lunch dinner

Open 8am to 3pm; from 6pm
(Sunday to 3pm only; closed Tuesdays)

83 Edinburgh rd Castlecrag NSW 2068

Phone 9967 8299

**CASTLECRAG
MEATS**

Award Winning Butchers

Specialists in free range and organic products

Free home delivery Tuesdays and Fridays

Corner Raeburn Avenue and Edinburgh Road

www.castlecragmeats.com.au

Phone **9958 4274**

Fax **9967 4181**

HSC ENGLISH

Coaching for Senior Students in

- * ESL
- * Standard
- * Advanced
- * Extension
- * Essay & Creative Writing

Call Henrietta 9958 7528

Vale: Bridget Sabina Gilling 1922–2009

Well-known Castlecrag identity Bridget "Biddy" Gilling died peacefully in a Blue Mountains nursing home on 25 June. She had remained socially and politically active, and in paid employment, well into her 80s.

Bridget was raised in a social activist family in England with strong Fabian, Humanist and Quaker influences. Her mother, Cicely Corbett Fisher, and her aunt, Margery Corbett Ashby, were prominent suffragists and campaigners for labour reform. Her Irish father Chalmers (Pat) was an Oxford Blue in Rugby who trialled for Ireland.

During WWII her family hosted refugees from Nazism as well as hundreds of service personnel from the Empire, particularly Canadians, Australians and New Zealanders. It was through this connection that she met her Australian future husband Douglas Gilling, who was serving in the navy. They were engaged after an acquaintance of three days and married in Sussex.

Bridget came to Australia as a war bride in 1946 to join her then repatriated husband. They settled soon afterwards in Castlecrag, where they lived for the next 56 years, and where they continued her family tradition of giving houseroom to waifs and strays, both two and four-legged.

After raising four children, Bridget graduated in social work from Sydney University in 1971. This led to a range of appointments to Commonwealth and State boards including the Social Security Appeals Tribunal, Mental Health Review Tribunal and as a NSW prisons 'official visitor'. She also chaired the Australian Consumers Association board and was active with the Prison Reform Council, the Australian Council of Social Service, Women's Electoral Lobby, Council for Civil Liberties, and was president of the Humanist Society and the Voluntary Euthanasia Society. Bridget is, however, most closely associated with the

abortion reform movement, for which she led the campaign from the late 1960s, standing as an abortion law reform candidate for the state seat of Bligh in 1971.

Bridget was an active member of the Castlecrag community and established a close circle of friends here. She was a regular contributor to community events and participated in a range of forums and discussion groups where her humanity and reasoned argument served as a guide and mentor to many others. She was close to her family and provided them with dedicated support in times of need.

Douglas, a prominent architect, and Bridget separated in the 1970s, but remained close for the rest of her life. He survives her, with their children Jeremy, Tracy, Jane and Rebecca, and her seven grandchildren.

Jeremy Gilling and Bob McKillop

Vale: Ron Bowra 1925–2009

Ron Bowra, a highly respected member of our community who lived in The Rampart, passed away in April. He was a most amiable man, a friend to all and was always a pleasure to meet.

Ron and his wife Robin with their two young daughters came to live in Castlecrag in the 1950s. They were staunch members of our community and of St James Anglican Church, of which Robin became a warden.

Ron had a distinguished career in the finance profession, which he served with dedication and passion. After serving in the air force during World War II, he gained

both legal and accounting qualifications while working full time. He practised accountancy, lectured at the University of New South Wales and later at the University of Sydney eventually becoming the University of Sydney's first Associate Professor of Taxation Law in the Faculty of Economics and then head of the Department of Accounting.

Ron's intelligence and common sense were applied with diligence to any task before him. He was always ready to assist the Castlecrag Progress Association (of which he was a member) as and when required.

Also with his thorough knowledge of the tax laws he was of enormous help to some of Castlecrag's better known businessmen in their dealings with the Tax Office.

Ron had a wide circle of friends, a loving family and a keen interest in golf (which he played with a very low handicap), all of which helped sustain him after the loss of his beloved Robin several years ago. He will be sadly missed by all of us, and especially by his two daughters and their families to whom the Progress Association extends its sympathy.

Jill Newton

HIGH STREET DESIGNS

HOME & GARDEN RENOVATIONS

**ECO-FRIENDLY SMALL PROJECT SPECIALISTS
CONCEPT & CONSTRUCTION**

Scott Byth Wilson
Master of Architecture

ScottBythWilson@gmail.com
Mobile 0404 083 155



Northbridge Veterinary Clinic

1/128 Sailors Bay Rd, Northbridge
(cnr Strathallen Ave)

T 9958 4800 F 9958 6800

**Puppy Preschool Classes now on Monday Nights
Please call for a booking**

Hours of consultation:
Mon-Fri 8am-8pm Sat 9am-noon

LJ Hooker

Castlecrag

The Kings of the Castle

Over 30 years servicing the community
in Sales and Property Management



Earn 20,000 Qantas Frequent Flyer Points*
when you list and sell through L.J. Hooker.

The premier Marketers in Sales & Leasing

91 Edinburgh Road, Castlecrag NSW 2068

Tel: 9958 1800 Fax: 9958 6063

Email: castlecrag@ljh.com.au

Website: www.ljhooker.com.au/castlecrag

Heidi King Graham King
Brian Thompson Vicki Bell Grant Percy
Dixie Hogland James Hundt

* Terms and conditions apply to this promotion.
See ljhooker.com for further information, or contact our office for a copy of these terms and conditions.

nobody does it better "

ljhooker.com



Council News

Home delivery grocery shopping service

For residents over 65 with limited mobility who are frail or recuperating from illness, a weekly grocery shopping service is offered by Willoughby Community Aid (WCA) following an eligibility assessment.

WCA staff assess the eligibility of each client. A volunteer contacts eligible residents each Monday by telephone to obtain a detailed shopping list. Delivery by a grocery retailer on a pre-arranged day later in the week is then organised. Clients pay for the total cost of the groceries and the delivery charge, by credit card or eftpos card, on delivery. The WCA service is free.

Other services available are linen provision, odd jobs, transport and legal advice. Enquiries to the Willoughby Community Aid Coordinator 9777 7824

WCA would also like to hear from people who are interested in becoming volunteers and assisting with community services.

Larrie Krause
Willoughby Community Aid

CALL FOR CHILDRENS BOOKS

The children's books left over from the Trash and Treasure stall at the Castlecrag Fair are being sent to Papua New Guinea, and more are needed. PNG is facing a literary crisis—with only 37 per cent of the population being able to read and write and only 47 per cent able to access primary school education. When PNG gained its independence from Australia in 1975 there were 32 public libraries in Port Moresby alone—now there are none—school libraries are existent but terribly outdated. There is only one bookshop in the capital which is out of reach to most people. Hence the majority of PNG children have grown up without access to books.

Buk bilong Pikinini (Books for Children) is an independent charity based in Port Moresby set up by the wife of the Australian High Commissioner to Papua New Guinea, Anne-Sophie Hermann, in 2006.

Buk bilong Pikinini needs support in order to sustain its programme. You can help by donating gently used books, toys or any children's education materials, and deliver them to:

Paul & Meyrick Gilchrist

25/1 Fig Tree Avenue,
Abbotsford NSW 2046 Australia

Phone: 02-97121909

Email: warraba@nobbys.net.au

If you need more information you can contact: bukbilongpikinini@gmail.com or check the Buk bilong Pikinini website: www.bukbilongpikinini.org

Peter Moffitt

Our day at the Fair

continued from page 1

teach my children at a local school. To say nothing of the many neighbours, school parents, friends and friendly others we met there. Perhaps, I wondered, if this was what it would have felt like in days past, when the majority of the community turned out for church, or for a weekly market day to share produce and gossip.

It helps, also, that the kinds of concessions the Fair hosted are tailored most conveniently to our family's tastes. The invariably creative Steiner School's offering and several other attractions provided hype-free pleasure for my small children. The predominantly fair-trade, organic or recycled parallel purposes of many stalls still any buyer's remorse on my part. And the live entertainment on offer was of the amiably musical sort we could have enjoyed, in comfort, for hours.

But it was not to be. After we had spent hardly an hour there, icy rain came down upon our unprotected heads. Undaunted, I continued to rummage the astonishingly good collection of books at the second-hand book stall. We used tarps, towels, jumble-saled clothes—anything we could find to keep the rain off all those precious pages.

In the end, we retreated, carrying gently-steaming gozemes as consolations back home in paper plates. But not before I'd filled the car boot with the loot of many hastily discounted books and periodicals. Market forces bending to natural forces in a soggy take on Adam Smith. I was at least now well-stocked for a long, cold winter.

Susheela, a Castlecrag Resident



Home Assessment Service



From 1 July 2009, NSW homes experienced a 20 per cent increase in electricity costs.
Learn how to reduce your energy consumption and save.



Book now for your chance to win a solar hot water system worth over \$3000!*

The ClimateClever Home Assessment Service will provide:

- ✓ Expert advice on ways to reduce your household energy.
- ✓ FREE energy saving devices.
- ✓ Information on government rebates.
- ✓ A NABERS energy and water star rating and carbon footprint assessment for your home.
- ✓ A tailored action plan to assist in reducing your household's carbon footprint and improve your NABERS rating.

Book your FREE ClimateClever Home Assessment today on 9777 1000 or for more information visit www.willoughby.nsw.gov.au/climateclever

* See our website for competition terms and conditions.

Community Notice Board

Community Organisations

Castlecrag Progress Association:

'Representing the Castlecrag Community'

General Meeting: Tuesday 25 August from 7.30pm at the Castlecrag Community Centre. This will be an Open Forum for residents to raise issues of concern with contributions from others on how these can be addressed. All welcome (see Notice on Page 1).

Further information: info@castlecrag.org.au

Castlecrag Community Library:

Support your local library.
Opening hours: Tuesday 3–4.30pm; Thursday 2–5pm;
Saturday 10am–12noon. Phone: 9958 8395.

Castlecrag Conservation Society: The next meeting will be held on Thursday 24 September at 8pm at the Castlecrag Community Centre. Speaker to be confirmed. Information: Harold Spies 9958 8569.

CragSitters: A local community group providing families with an opportunity to network and provide contact with available babysitters in the area. Information: cragitters@yahoo.com.au

Haven Amphitheatre: The next event will be the Epicentre Theatre Company's production of Don Quixote on 27–29 November and 4–6 December. For information and bookings visit: <http://www.thehaven.biz/index.php>

Willoughby Environmental Protection Association (WEPA):

The next general meeting will be held on Tuesday 15 September at the Artarmon Library, Elizabeth Street at 8pm. Speaker to be confirmed. See <http://wepa.org.au/> for information.

Other Events / Notices

Sydney Opera Society: Saturday 5 September, 2pm Gavid Garrett will give a presentation on *Così fan Tutte* at the Presbyterian Church Hall, cnr Laurel and High Streets, Willoughby. Also on 3 October Victoria Watson will speak on *Peter Grimes*.

Further information: Shirley Robertson 9605 5851 or Nancy Fleming 9958 3110.

Willoughby Street Fair: Saturday 12 September from 10am–4pm with 150 stalls and 4 entertainment stages. The Street Parade will take place from 10.30–11.30am with extensive road closures. Please use public transport to attend this event.

Willoughby Girls High 30 Year High School Reunion

(1974–1979) will be held on Saturday 26 September 2009 from 7.30pm, upstairs at the Monkey Bar, 53 Orchard Street, Chatswood. Cost \$35 per head includes finger food; drinks at own cost. Any photos would be greatly appreciated.

RSVP by 4 September to Sue (May) Downes at s.downes@bigpond.com; phone: 0410 601213.

Northbridge Progress Association (NPA): The next general meeting of the NPA will be held on Wednesday 30 September at 8pm, St Marks Hall, Malacoota Road.

*The Community Notice Board is a service by the Castlecrag Progress Association.
Please contact editors@castlecrag.org.au with details of forthcoming events and activities for inclusion.*

R&W Northbridge Castlecrag

9958 1200

81 Edinburgh Road, Castlecrag 2068

YOUR PREMIER AGENT

Are you interested to know

- How much your property is worth?
- How long it would take to sell?
- How much would it cost?
- Is there market demand for your property?

If so, contact our office today for Real Estate advice from agents who really know your area and get results.

IT COSTS NO MORE FOR THE BEST

Providing excellence in Real Estate Service
Over 25 Years Real Estate Experience

Mark O'Brien, Licensed Real Estate Agent

www.randw.com.au/castlecrag
castlecrag@randw.com.au

CASTLECrag & isis store

POST AUSTRALIA

JEWELLERY & GIFTS

We are extending our **STATIONERY** range
Let us know your needs!

Passport & Photo Services

PRIVATE BOXES AVAILABLE

122 Edinburgh Road, Castlecrag NSW 2068
Phone: 02 9958 8650 or 02 9967 5177



jodie mcgregor flowers
fabulous flowers for fabulous people

MARKET DAY SPECIAL

Bring this coupon in to receive \$10 off
your flower purchase on any Monday,
Wednesday or Friday in August.
That's fresh flowers and a fresh \$10 bonus!

100 edinburgh rd castlecrag 9958 8666 jodie.com.au