

INSIDE THIS ISSUE:

- 2 Community Bytes
- 3 President's musings
- 4 Northbridge Plaza and Castlecrag
- 5 The Fair: How did it rate?
- 5 Willoughby Council News
- 6 Fun at the Fair
- 8 Willoughby Traffic: What is happening
- Think Global...Shop Local
- 9 New Bike Routes in Willoughby
- 9 Trivia Night (A Spring Festival Event)
- 10 Castlecrag Counts: 2006 Census
- 10 Neville Hyman Milston
- 11 Willoughby City Council News
- 12 Community Notice Board

MEMBERSHIP:

Progress Association Membership renewals for 2007 are now due. Please see page 3 for membership renewal form.

OUR NEXT MEETING:

GENERAL MEETING

Tuesday, 21 August
7.30pm for 8.00pm

What do we want for our community over the next few years?

YOU ARE WARMLY INVITED to the Community Centre, The Rampart (down laneway near intersection with The Postern).

Enjoy being part of planning for YOUR household and YOUR community. We are awaiting a response to our invitation to a renowned social commentator to provide an Australia-wide context.

7.30–8.00pm Wine-tasting and refreshment.

8.00–9.15pm Presentation and Discussion

The 2007 Castlecrag Community Fair



Shop owners, local community groups, talented children and residents both young and old all came together for the Castlecrag Community Fair on Sunday 3 June. They were pretty much unanimous in declaring the 2007 Fair a great success!

We were fortunate in having a beautiful, fine day. Large crowds descended on our suburb and they had a great variety of entertainment, information and craft stalls, and children's activities to experience. The restaurants and stores aligning the streets of Edinburgh Road opened their doors to our friendly community with rows of stalls erected.

Whether you were after food, information on local pests or weeds or wanted to pick up some second hand clothing – you would have found it all on this entertaining day.

Willoughby Mayor Pat Reilly got proceedings going at 10am by officially opening the new Watergate Walking Trail and the Fair. "It was a great day for a Fair in the historic suburb of Castlecrag," he said. "The Castlecrag Progress Association has done a great job in bringing together all the community groups and the local businesses of the area to stage this event." Cr Reilly thanked all those who had helped organise the event and sponsor the Fair, which he said "demonstrated the high level of community interest and support for the event".

Children of the neighbourhood were entertained on a ride, some were eating cake made by local residents and others were gathered to watch the local girls perform to the beat of Christina Aguilera's "Candy Man". The bungi jumping was a key attraction for children from the outset, the Wildlife Show held the attention of youngsters from 11am. Sally's Bookshop offered a book reading of Oscar and Quincy by the author Kerry Millard, much to the delight of smiling young faces.

There was a real buzz around the Fair site throughout the day. Many visitors took time to relax with friends at our coffee shops, taste the wines on offer or explore our shops. The crowd in The Crag was also entertained by the local talented group Saving Grace, one member of which is a son of Pam (of Pams' Café fame). Others came to learn more about Castlecrag's history and special features by joining one of the guided walks of the suburb.

The day brought many people through the doors of the bookshop. The proprietor Sally Crawford said: "we have had lots of locals coming into the store to have a look at our books."

Jeff Pharar, who has taken over ownership of Romano's Restaurant said: "It has just been a great opportunity today to get to meet more of the locals in Castlecrag. A lot of the faces are familiar, but we definitely don't know everybody yet," he said.

The community stalls offered an amazing variety of information and fund-raising activities. James Smallhorn, Council's Environmental Projects Officer who grew up in Castlecrag, was assisting other Council staff on the Open Space stall, which provided information leaflets on the local walking tracks, volunteer wildlife and weeding regimes and the highly successful Sustainability Street program. Sustainability Street brings residents together to reduce the impact on their environment.

A number of our community groups have reported that, from their perspective, the Fair was most successful, both in terms of the interest shown by the public and the funds raised to support their ongoing activities.

The Council-led walk along the Watergate Walking Trail got under way immediately after the opening, while Adrienne and John Kabos and Bob McKillop led four walks of the Griffin Conservation Area during the day. It was evident that the participants had come to the Fair to learn more about our suburb, many of them coming from Middle Cove, Castle Cove and North Willoughby, but there were others from further afield, including the Canada Bay Council area. Bob McKillop found two of his old university friends who had come from Perth on the first walk, so this group received 'special attention' in an extended walk that lasted 2½ hours!

THE CRAG

is the community newsletter of the
Castlecrag Progress Association

PO Box 4259
Castlecrag NSW 2068

web page:
www.castlecrag.org.au

emails to the CPA:
info@castlecrag.org.au

Please send all correspondence and
membership renewals to the above address.

COMMITTEE 2006-2007

President Bruce Wilson

Vice Presidents Peter Moffit
John Steel

Secretary Jill Newton

Treasurer Diana Jones

Committee David Harrop
Elizabeth Lander
Bob McKillop
Howard Rubie
Simone Selby
Gay Spies OAM
Kate Westoby

THE CRAG

is edited by

Bob McKillop 9958 4516
Jacqueline Levett 0416 482 756
email: editors@castlecrag.org.au
Letters to the Editor are welcome.

Design, Typesetting & Printing

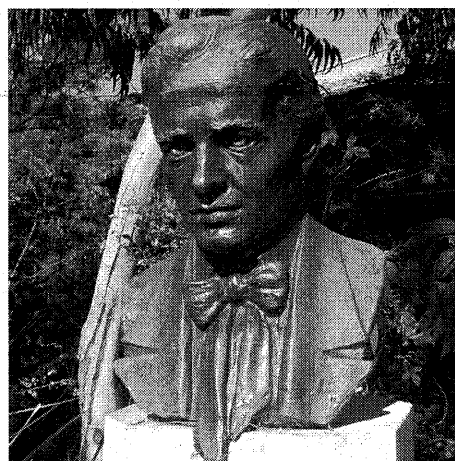
Robin Phelan & Associates
9958 4191
rocketdesign@bigpond.com

Community Bytes

2007 Red Shield Appeal

Our Castlecrag Red Shield Appeal coordinator, Diana Jones, reports that residents contributed nearly \$6000 to her team of collectors on Sunday 20 May. The Salvation Army expresses its thanks to all those who collected for and/or donated to the 2007 Red Shield Appeal. Unfortunately not all of Castlecrag could be covered this year as Diana was short of volunteer collectors. We request all residents to give some thought to volunteering next year. Please contact Diana on 9958 4885.

Judit Englert-Shead, 1949-2007



We record the death of Judit Englert-Shead in May. Judit was a fine sculptor and artist and her obituary in the Sydney Morning Herald of 21 May 2007 lists the bust of Walter Burley Griffin that stands outside the

Griffin Centre here in Castlecrag among her well-known sculptures that stand in Australia, Hungary, Bulgaria, Germany and in private collections.

Judit was born in Budapest, Hungary and studied at the College of Arts and the Hungarian Academy of Arts in that city. She met the Australian artist Garry Shead there and after their marriage, she became the muse central to Garry's development as a leading Australian painter. The Shead family have been long residents of Castlecrag and when Newell Shead approached the Progress Association in late 1996 with the offer of commissioning a bronze bust of Walter Burley Griffin by Judit we were most supportive and initiated negotiations with Council for a suitable site. The mayor, Pat Reilly, unveiled the sculpture at a ceremony outside the Griffin Centre shops in September 1997 (*The Crag* No. 117, November 1997). It stands as a fitting tribute to Judit's artistic work.

Castlecrag Dental Service

Alex Dong and Winnie Li took over the Castlecrag Dental Practice in 2006 and, given that the residence is at the rear of the practice, they have become enmeshed in our community. Alex and Winnie met at dental school in New Zealand and they migrated to Melbourne before moving to Sydney 5 years ago. They have found Castlecrag to be a delightful environment and their new community to be most welcoming. Their 2 year-old daughter Anna attends the local Montessori Down Under Three Group. The Castlecrag Dental practice is children-oriented with its own playcentre and offers no gap payment for children's dental examination and cleaning.

Sally's bookshop

THE DESTINATION
FOR THE BEST RANGE OF QUALITY BOOKS
FOR EVERYONE IN CASTLECRAG

After 25 years in the Gordon Centre
we have moved and are now your local bookshop!

As a specialist children's book shop,
combined with our general range
we are able to cater for all ages of book lovers.

In our Gallery and Gift area art supplies are also available.

Sally, Jenny, Steve and Alex have together
many years of book experience,
Jenny and Alex especially in Children's books.

We would love to see you.
Come and experience a warm welcome by our friendly,
knowledgeable and helpful team.

Shop 4/122 Edinburgh Road, Castlecrag

Ph 9958 5007 Fax 9967 3740 Email sallysbooks@internode.on.net

Open Monday to Saturday 8.30-5.30 Sunday 8.30-12.30

Burleys

CAFE - RESTAURANT

Open 7 days a week

9958 8441

Shop 5, The Quadrangle, 100 Edinburgh Road

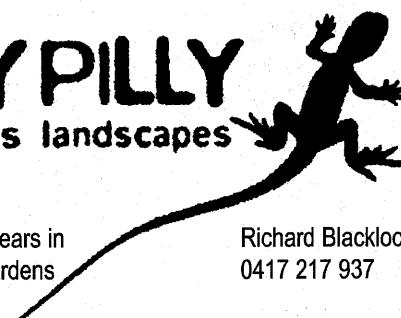
LILLY PILLY
indigenous landscapes

Specialising for 12 years in
Native Flowering Gardens

Low Maintenance

Sandstone Walls Paving & Features

Richard Blacklock
0417 217 937



Community Bytes cont...

Alex and Winnie set up a table at the Castlecrag Fair to raise funds for Operation Cleft, a charity operated by the Rotary Club of Box Hill in Melbourne, to help children in developing countries who have cleft palates and have the deformity corrected. They raised sufficient funds for a child from Bangladesh to have an operation. Alex and Winnie express their thanks to all those who gave generously to the cause.

CragSitters

CragSitters (see *The Crag* 163, p.6) had its inaugural gathering on 6 May at Stoker Playground. It gave an opportunity for young local families to meet each other. A number of new babysitters also attended, introduced themselves and added their names to the list. An updated list is available to *CragSitters* members.

New members, both families and babysitters are welcome to the group, so if you're a family who would like to find out more about the group or if you are interested in providing babysitting services, you can email us on cragitters@yahoo.com.au. Existing and new members are invited to join in the next gathering on 9 September (see Community Notice Board on p. 12).

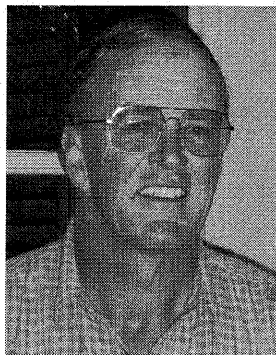
At the Haven

With the support of a Spring Festival grant from Willoughby Council, the Haven Amphitheatre presents the highly acclaimed children's show **WHEN CAMELS COULD FLY** for two special performances only – **Saturday 22 & Sunday 23 September at 2pm.**

When Camels Could Fly is an inspiring and uplifting performance which celebrates our rich cultural diversity through story, song, live music, dance and puppetry. Written and performed by the multi-talented Bronwyn Vaughan, the show is sure to delight all family members.

After 31 years of successful operations at the Haven the committee is aware of the changing demographic of Castlecrag. Plans are in place to ensure that the Amphitheatre will always be relevant, but we do need help! If you have any ideas or are able to assist with productions please call Howard Rubie on 0418 648 870 or 9958 1729.

President's musings



Eds:
This column introduces the new Progress Association President, Bruce Wilson, to the community.

Thank you for the honour of election to this role. I am a retired government environmental lawyer and business manager, running our family businesses here in Sydney and the Upper Hunter. I am a former president of the Castlecrag Sports Club, last President of Castlecrag Infant School P&C and a member of the Council's Haven Amphitheatre Sub-Committee. I have a particular interest in encouraging friendship between neighbours and reinvigorating the peninsula's sense of community, which can be summed up as: 'Think local, Shop local, Employ local'.

What sort of 'community' are we in Castlecrag in 2007?

On page 10, I set out some demographic data from the 2006 Australian Census on Castlecrag. While interesting, this data tells only a small part of the picture. How do we fit together socially, economically and environmentally? Are our natural and geographical blessings used to full advantage?

From the 1920s to the 1950s, Castlecrag was noted "as an experiment in communal and community planning and living, and for the intellectual, Theosophical, Anthroposophical and Natural history views of its inhabitants". Cars were few, residents lived more frugally, partly in fear of another Depression, and partly recognising that "the best things in life are free." These included strolls, picnics, dropping-in, rock-fishing, dinghy sailing, gardening, scouts and church fellowships. It was a diverse community of communists and capitalists who set aside their weekday differences to work shoulder-to-shoulder on weekends building the Community Centre and other facilities.

Today the Crag is richer in median income and assets. What the Census doesn't show is how many here are poorer in 'free-time' and relationships with fellow-residents, dependent on cars, with latch-key kids and joyless consumption. The Crag still has a remarkable 14 varied community associations, but these need reinvigoration by our 30-40 year olds. Our recent Castlecrag Fair was a wonderful 'community occasion', thanks to Simone Selby and generous local businesses who contributed to the occasion.

In order to build on this community spirit the Progress Association is seeking your ideas and support. What other events could we undertake? How would YOU describe the Castlecrag "community" today? And what would you like it to be in 8 years' time, 2015?

Let us know your ideas in 20-50 words by emailing to: info@castlecrag.org.au or drop a note to PO Box 4259, Castlecrag. Better still, come along to the General Meeting on 21 August at 7.30pm (with a surprise special guest) and enjoy talking around these and other local issues over a cuppa or a vino at our Community Centre. We are particularly keen to hear from teenagers and the 30-40 year-old residents.

Bruce Wilson

Notice

Jacqueline Levett, who has assisted with the past two issues of *The Crag* has advised that she is unable to continue in this role. The Progress Association is therefore seeking assistance from Castlecrag residents who can assist in the writing and preparation of our newsletter.

The tasks cover keeping in touch with events that affect our community, contacting individuals and groups for information on recent and coming events, interviewing people and writing up stories for *The Crag*, brainstorming matters to be covered with other editors, and assisting with editing of material. If you can help please contact us at: editors@castlecrag.org.au or ring Bob McKillop on 9958 4516.

Jill Newton, Secretary, CPA

Castlecrag Progress Association Inc. Membership Form

ANNUAL SUBSCRIPTION FOR 2007

I wish to renew / apply for membership to the CPA Inc., and enclose payment of: \$

(\$10 per person, \$5 per student)

If you wish to make a donation, this will be most welcome. I enclose my donation of: \$

Name:

Address:

Phone:

Please post to the Treasurer:

**PO Box 4259
Castlecrag 2068**

Northbridge Plaza and Castlecrag

Proposals for the redevelopment of the Northbridge Plaza have generated considerable concern among residents and business-owners in the area. Over 150 people braved a cold night to attend a public meeting on this matter organised by the Northbridge Progress Association on 18 July. The debate was sufficiently agitated to quickly warm the St Marks church hall.

A number of Castlecrag residents and business people attended the meeting. This article outlines the issues surrounding the Plaza proposals from the perspective of the Castlecrag Progress Association and our local business houses.

Northbridge Plaza was built in 1961 on land previously used for market gardens and residences by the developer Sid Londish. A condition of the consent was that Mr Londish donate the land to the community for the associated car park to Willoughby Council and a covenant on the land requires it to be used only for free car parking for the shopping centre and the adjacent baby health centre. Council zoned the Plaza as a community shopping centre. In the 1980s, the then owners, Australian Fixed Trusts, demolished the original shopping centre and the rebuilt Plaza was reopened in 1985. Woolworths, its main tenant, drew shoppers from other suburbs and this generated conflict with local residents over the increasing traffic congestion in the Northbridge area.

The Plaza had passed to new owners by 1987, when Jaydesh lodged a DA with Council for alterations and enlargement of the centre, including the addition of an office floor over the supermarket area. The Plaza was required to provide additional car parking spaces and a delivery area, which they achieved by purchasing and redeveloping the former service station on the corner of Eastern Valley Way and Sailors Bay Road.

Concern about the ongoing maintenance costs of the car park resulted in Council entering into negotiations with Jaydesh in 2003 to offer the firm a 65-year lease for the car park, which would be redeveloped as part of the its proposed expansion of the Plaza. Traffic problems were of increasing concern to Northbridge residents and there was also a concern the car park land, zoned for community use, would be alienated.

A move by the Northbridge Progress Association in 2003 for the diversion of traffic away from Northbridge, thereby increasing the traffic volumes in South Willoughby and Naremburn, resulted in the formation of a sub-committee of the Federation of Willoughby Progress Associations to examine the issue. I represented the Castlecrag PA on this sub-committee. The group concluded that the diversion of traffic to other heavily congested areas was not a viable 'solution' and that improved public transport and pricing mechanisms to induce people to reduce car use are the only solutions to the traffic problems (see p. 8). It also recognised that the proposed expansion of the Plaza would not only generate additional car travel, but would also significantly impact on the continued viability of neighbourhood strip shopping centres such as Castlecrag.

With the sale of Northbridge Plaza to overseas interests, AMP Capital Investors (AMP CI) assumed responsibility for managing the complex. Redevelopment of the Plaza was again placed on the agenda in 2006 when AMP CI initiated a series of stakeholder workshops on the development of a Master Plan for the Plaza. I attended the second of these workshops on 4 December last. While stakeholders expressed strong views against the expansion of retail areas at the complex and the need to reduce traffic congestion, there was general agreement that the present Plaza was a poor design and that there are opportunities for improvement through good design and a better mix of activities, including residential elements and community services.

There was therefore considerable anguish among community stakeholders when AMP CI presented its proposals to the third meeting in April in a manner that suggested the concerns put forward had not been addressed. The AMP CI proposal involved an increase in the retail space by 80 per cent, the construction of several blocks of residential units along Eastern Valley Way and the conversion of the car park area into a two-storey underground car park. Residents estimated that the traffic generated by the development would more than double. Community representatives objected strongly to these proposals at Council meetings in May and June. As the

result of excellent debates, Council has invited AMP CI to develop a Masterplan for the Plaza, the car park and adjoining lands with any increase in retail space limited to approximately 10 per cent.

The Northbridge meeting on 18 July unanimously resolved that Council's motion limiting the expansion in retail space be adhered to, that ownership and control of the publicly-owned Plaza car park land should remain with the community and that any residential units built on the site should be in keeping in height, bulk and quality with existing residential units in Northbridge. The meeting also called for any redevelopment to have minimum impact on current traffic volumes and on local neighbourhood shops and businesses, that improvements be made to access within the shopping centre for elderly and disabled members of the community, improvements be made to the car park security and convenience, whether or not the car park is located underground and that there be minimal impact on the residents of Harden Avenue, Tenilba Road, Northbridge Gardens Retirement Village and the Paulian Villa Nursing Home.

Northbridge Progress Association President John Becroft told the residents: "What happens to the Plaza shopping centre and the adjacent Council car-park could have a profound impact on local traffic, shops and businesses, not only in Northbridge but in surrounding suburbs. It could literally change the character of our suburbs."

The AMP CI representative Gavin Boswarva, stated that the existing centre would not be demolished, only enhanced. "We want to work with Council and the community to move forward with the Masterplan process," he said. Gavin also acknowledged that AMP CI cannot sell or lease the car park without the support of Council and the local community.

The Castlecrag Progress Association supports the efforts of Northbridge residents to maintain the character of their suburb and it distributed flyers about the meeting to our local shops on 18 July. Shop owners have expressed a keen interest in the outcome of the Masterplan process.

Bob McKillop



Castlecrag dental
99584557
Dr Alex Dong & Dr Winnie Li
105 Edinburgh Road



ROMANO'S
Licensed Italian Restaurant
OPEN: Lunch Wed-Fri 12noon-3pm Dinner Mon-Sat 6-10pm
Tel: 9958 6122
www.romanositalianrestaurant.com.au
2 The Griffin Centre, 122 Edinburgh Road, Castlecrag

THE FAIR: How did it rate?



The purpose of the Castlecrag Community Fair is to bring the various elements of our community – particularly our residents and business owners – together in a manner that generates ongoing benefits for all. It is also an opportunity to promote the special features of our suburb to the wider community.

This year the Progress Association made a conscious effort to link the Fair activities in The Postern and its car parks with the shopping centre by locating stalls along the Edinburgh Road footpaths. The community stallholders were most enthusiastic in their response, both in terms of the interaction with visitors and the funds raised.

The response from our business houses was more mixed. Some reported good trade on the day, while others felt that it was below their expectations. The Progress Association has received a complaint that stalls selling coffee and food were in competition with established businesses, and this has been taken on board for the planning of future fairs.

As indicated in the lead article, the Castlecrag walks conducted during the

Fair also provided a good medium for promoting our suburb to visitors. We expect that many of those living in suburbs near Castlecrag will be making more visits here as a result of this exposure. Indeed, it was heartening to hear several speakers at the Northbridge meeting on the Plaza (see page 4) comment that they now go to Castlecrag to experience a friendly village atmosphere.

Our Treasurer, Diana Jones, has undertaken a detailed analysis of the financial aspects of the Fair. On the income side, direct sponsorship and donations from local businesses amounted to \$3425. Stall fees amounted to \$3575 and the income from the raffle and the jumping castle was \$1731, making the total income \$8731.

Total expenditure was \$9270 as at 26 June, the major items being the hire of the stalls, chairs, etc (\$3745) and the printing and delivery of flyers to promote the event (\$2967). Thus there was an overall loss of \$539.

While aiming to break-even, the Progress Association considers this a satisfactory result, as some unplanned costs were

incurred when some expected services failed to arrive and alternative arrangements had to be made. Our Trash & Treasure stall made \$1650 on the day and it has \$5300 in its accumulated funds from previous Community Fairs. We will be approaching members for ideas on suitable projects to which such funds can be directed over the coming months.

In the euphoria of the day, several local business people said they would like to see the Community Fair held on an annual basis. Organising the fair is an extremely demanding task and for this reason we have only tackled it every second year.

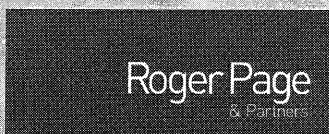
This year we were fortunate to have Simone Selby come forward with the offer to organise the Fair. Simone did a fantastic job and the Progress Association has formally expressed its gratitude to Simone for the effort she put into making the Fair such a success. We have also formally expressed our thanks to Kathy Rosenmeyer, who once again stepped forward to organise the Trash & Treasure stall.

The Editors

Fair Sponsors

The Castlecrag Progress Association especially thanks our major sponsors:

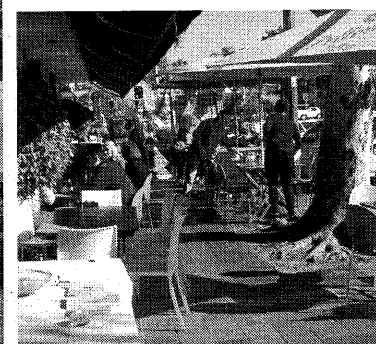
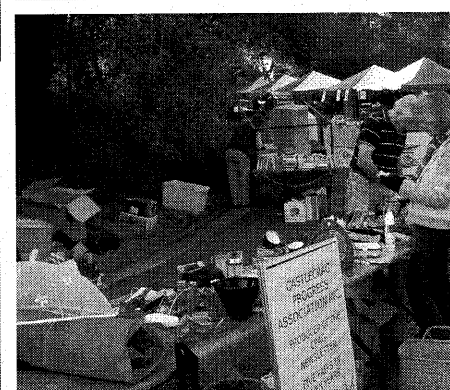
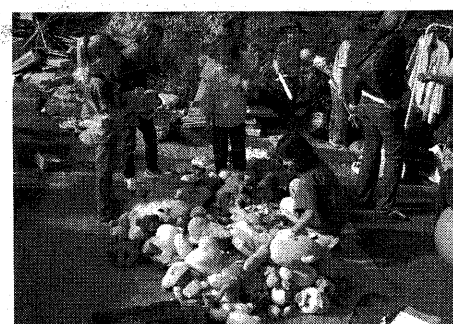
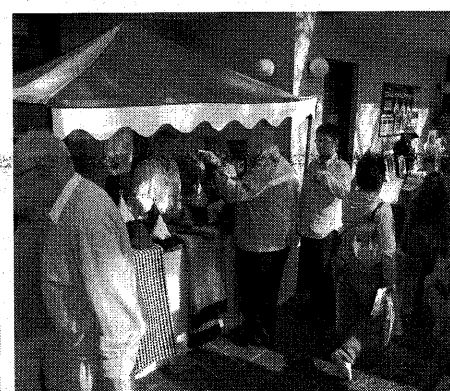
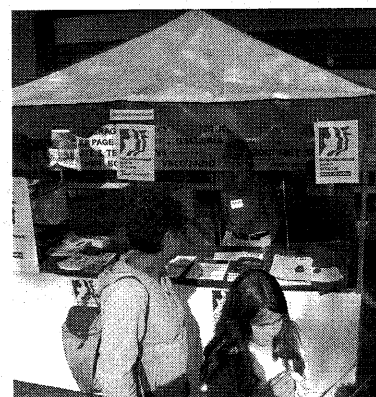
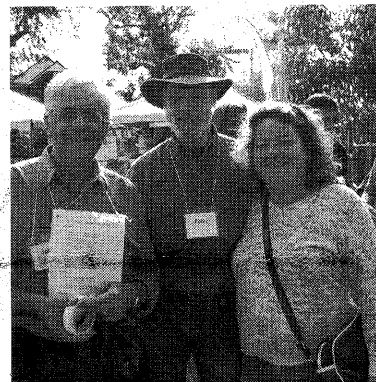
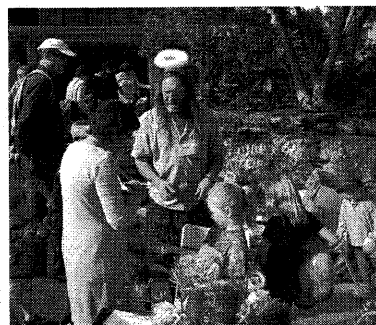
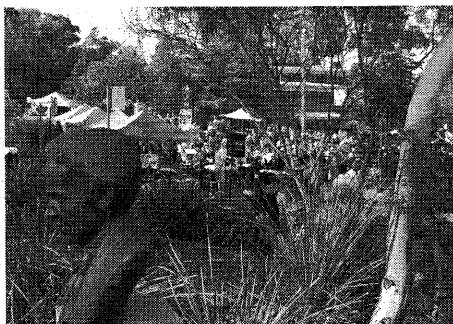
YOURS BEAUTIFULLY



We also express our thanks to the following businesses that assisted with sponsorship (eg of stalls for community groups) or made donations to our raffle:

Bai Yok Restaurant; Burley's Restaurant; Castlecrag Cellars; Castlecrag Florists; Castlecrag Fruiterers; Castlecrag Meats; Castlecrag Newsagency; Castlecrag Pharmacy; Castlecrag Post & Isis Store; Copiworld Printers, North Sydney; Coles Supermarket; Flavours of Peking Restaurant; Ganache Patisserie; Gourmet Source; John Ruddy & Associates, accountants; LJ Hooker, real estate agents; Martha's Restaurant; Mia Boutique; Momo/Oven Fairy; Pam's Café; Revive Fitness Studio; Rodney Clark; Sally's Bookshop; Simon Johnson; Sydney Butcher Boys; Travelplan.

All Castlecrag residents are encouraged to support our local business houses.





Willoughby traffic: what is happening?

Long-standing readers of *The Crag* will be aware that I have a close interest in urban transport and traffic matters. Since February 2006 I have represented the Federation of Willoughby Progress Associations at meetings of the Willoughby Traffic Committee. While this committee meets at the Willoughby City Council chambers, it is strictly a technical committee of the Roads & Traffic Authority (RTA).

Readers may be interested in a general assessment of the issues that have come before the Traffic Committee over the past 18 months and some comments on the implications of these trends. While we in Castlecrag may get agitated at delays in getting out of the suburb in peak hour traffic and the safety of right-hand turns out of Edinburgh Road into Eastern Valley Way, we generally live in splendid isolation from the traffic chaos that has enveloped much of Willoughby City over recent years.

Two main themes dominate the meetings of the Traffic Committee. One set of issues revolves around the gridlock that is occurring at specific locations across the city because too many people try to drive their vehicles to the same spot at the same time. Major trouble spots are schools, larger shopping centres, sporting fields and locations of special events, such as the annual Spring Fair parade. The daily peak hour jams into the Chatswood CBD and the city also come into this category. Traffic congestion around schools and gridlock at sporting events has a remarkable impact on human patience and civility when motorists and local residents come face to face!

In addition to all the time losses and greenhouse emissions generated by this congestion, there are numerous other impacts. Bus operators are increasingly reporting significant delays and an inability to maintain their schedules, while emergency services, such as ambulances and fire brigades, are coming to the Traffic Committee with requests for action to allow their vehicles passage through the chaos.

The second set of issues revolves around the fact that having arrived at a destination; a motor vehicle requires a large space for parking. That space has a high value in urban areas, but motorists are reluctant to meet that cost. The cheapest option is to

take over public spaces for parking private vehicles. A high proportion of the matters coming before the Traffic Committee come from residents in narrow streets that have become parked out to the extent that two-way vehicular access is blocked. There are numerous requests from residents for parking restrictions to overcome this congestion or from service providers to allow their vehicles access.

At the July meeting the committee was briefed on the results of a parking study in the Artarmon Industrial Area. It highlighted the saturation of available parking spaces throughout the area and the flow on to surrounding residential streets, many of which are 100% 'parked out' each working day. The study highlighted the high level of parking infringements, with vehicles parked on footpaths and nature strips, across parking bays and transgressing time restrictions. It estimated that a rigorous enforcement program would generate some \$25,000 per day in parking fines.

The efforts of the Traffic Committee to address the matters that come before it are limited by the responsibilities delegated to it and the policy framework within which it operates. Sydney's traffic problems are, in part, the result of transport policies that encourage high greenhouse gas emissions and ongoing reliance on fossil fuels, lack of integrated land use planning and inappropriate pricing signals to users, thus generating low economic efficiency. Governments of various persuasions have introduced measures that encourage car use and penalise public transport users, such as tax concessions for company cars and parking spaces, GST on fares and free parking at shopping malls. There is no political will to address congestion and introduce road pricing schemes that recover the investment in roads by charging for use on a mass/distance basis and with differential charges for the time of day.

What is obvious from the many traffic and parking issues that come before the Traffic Committee is that only a profound change in everyone's attitude and behaviour in terms of movement and mode of transport will achieve any noticeable result in terms of overcoming the present chaotic situation in Willoughby. I note with interest that there

has been a profound change in public awareness about climate change and sustainable living over the past year or so in terms of housing, water conservation and some related matters BUT there is a mysterious barrier to taking action on the 40 per cent of household energy used for transport. Getting into the car to drive the kids to soccer or to go shopping is just too convenient and thinking about the consequences can be left to others.

What consultations with residents on local traffic concerns show is that there is strong support for Council to 'do something, so long as it does not affect my property or amenity'. In a similar vein, several speakers at the public meeting on Northbridge Plaza (page 4) stated that they wanted to see the 'traffic congestion fixed up', but at the same time they wanted the continuation of free parking at the Plaza car park. It seems most likely that the traffic congestion and parking problems of Willoughby are set to become a whole lot worse before effective solutions are possible.

While we wait for future action, perhaps we can reduce our ecological transport impacts by shopping locally and walking there and back whenever practical? We encourage residents to "Think local, Shop local and Employ local".

Bob McKillop

Think Global... SHOP LOCAL

How can we minimize the negatives in shopping today? Even 'born-to-shop' aficionados get jaded by stop-start traffic, difficult parking, crowds of jostling strangers, bewildering choices of similar goods and anonymous shop assistants with limited knowledge or communication skills!

By contrast, here in Castlecrag some 70 per cent of residents live within a health-giving 10-minute stroll of our boutique shopping cluster. The range of eateries is excellent, specialist meat and fruit & vegetables providers, couturieres, delicatessens, travel, quality books, pharmaceuticals, etc, and backed up by a mid-size Coles Express.

...continued on page 9

Castlecrag
FRUITERS

Shop 2-4 Quadrangle Shopping Village
100 Edinburgh Rd CASTLECRAIG 2068

Ph: 9958 2875
Fax: 9967 2874

We only deliver the BEST
Please call or fax us

CASTLECRAIG
MEATS

Award Winning Butchers

Specialists in free range and organic products

Free home delivery Tuesdays and Fridays

Corner Raeburn Avenue and Edinburgh Road

Phone 9958 4274 Fax 9967 4181

Think Global, SHOP LOCAL

continued from page 8

Sometimes individual price tags are a little higher than at mega-stores. Sometimes a particular item isn't available immediately, but can be ordered in. But all the business-owners want to work harder to retain YOUR custom, because a local resident is more likely to be a repeat or spontaneous customer, and an advertiser to their neighbours.

Finally, do the quantitative and qualitative sums for your household: dollars, hours, travel style and time, and ease of item selection. You may find you are valuing your 'free' time at less than a dollar an hour!

The huge success of Castlecrag Fair was guaranteed by generous donations from all (except three) of our local businesses giving several hundred dollars each – and three being \$1000 Sponsors: Roger Page Real Estate, Romanos and Yours Beautifully. All of them deserve our custom – and a word of thanks when you shop there.

When you (eventually) reach the traffic lights at Eastern Valley Way, look up and read the (invisible) banner: "Abandon hope all ye who exit here!"

Why drive out into Willoughby gridlock towards joyless consumption? Why not shoulder the backpack, or dust off the shopping stroller, and enjoy a healthy walk to the shops. Buy all the essentials, and a few non-essentials just to surprise your household.

Check out the wide range of goods and services right here in your front-yard. Bump into friends and catch up with news; relax with some refreshment. Rediscover the joys of local shopping. (Oh, did we mention a small contribution to saving Planet Earth? 'Think globally, Act locally'.)

Bruce Wilson

New bike routes in Willoughby City

Willoughby City Council promotes ecologically sustainable development, and is working towards achieving a liveable city centre by reducing car dependency and encouraging walking and cycling. Council adopted a new bike plan in September 2006 and funding for the introduction of bicycle facilities received from the RTA was available within Council's budget for 2006-07. The following signposted on-road bike routes have recently been marked:

- **Route 26:** An east-west route from Merrenburn Avenue/Brook Street, St Leonards to Henry Lane, Naremburn linking with the existing routes in North Sydney LGA and Willoughby Council routes through Bicentennial Reserve. A dedicate bike lane has been provided on approach to the traffic signals at Merrenburn Avenue/Brook Street intersection;
- **Route 21:** A route through the Artarmon Industrial area linking the Gore Hill Freeway cycleway with Lane Cove;
- **Routes 10/12:** a route linking the existing cycleway on Johnson Street with the Castlecrag Peninsula, via Laurel Street and Edinburgh Road;
- **Route 3:** Cambridge Lane to McIntosh Street in Chatswood.

Castlecrag residents will no doubt have observed the new markings for the cycleway and car parking on Edinburgh Road. Maps of the shared and dedicate cycle paths in Willoughby City are available from Council's Help & Service Centre at the Victor Street offices. A 'Community to Chatswood Bike Map' is available on the WCC website.

Editors

Spring Festival

Trivia Night

"A Willoughby Spring Festival Event"

The Castlecrag Progress Association is collaborating with the Federation of Willoughby Progress Associations to hold a Trivia Night in the Town Hall before it closes to make way for the Civic Place project.

Apart from fun and games it is a chance to hear the Wurlitzer before it is packed away and also a chance get to know fellow Willoughby residents.

Are you up to the Challenge?

Test out your knowledge.

Questions will be creative and include aspects of Willoughby's history.

Form a team of 8 or come as an individual for this night of Trivia and laughs.

Prizes for winners and fun for all

Bring a picnic and drinks, tea and coffee will available for purchase.

When: Saturday 22 September 2007

Where: Willoughby Town Hall

Time: 6.30pm for 7pm till 10pm

Cost: \$20 for a team of 8 or \$2 for individuals

Phone: 9419 6927 For further information and to register your team.

Any surplus monies will be donated to the Lady Mayoress' Charity



Roger Page & Partners
Real Estate

100 Edinburgh Road, Castlecrag

9958 0124

www.rogerpage.com.au

Let us show you why we are the
No. 1 independent real estate office
for the Middle Harbour
and surrounding districts.

Sales – Auctions – Rentals – Management

Roger Page
& Partners

Castlecrag counts: the 2006 Census

On Census night, 8 August 2006, householders in every house in Australia filled out their Census forms. So what secrets do our 1022 private dwellings contain? Some Castlecrag numbers and percentage proportions are summarised below.

Population: 2807; Females: 50.2%.

Ages: 0-14 years, 650; 15-24 years, 302; 25-54 years, 1079; 55-64 years, 372; 65 years and over, 405. The median age is 41.

Citizenship: 88.9% Born overseas: 878
Country of birth: Australia 1844; England 174; New Zealand 59; Hong Kong 58; South Africa 45; China 44. Languages spoken at home: English only 82%; Cantonese & Mandarin 138; German 39; Japanese 37.

Religious affiliation: Catholic 748; Anglican 737; No Religion 547; Uniting Church 106; Judaism 98.

Marital status of Over 15s: Married 67%; Never married 227; Separated or divorced 6.1%; Widowed 4.5%.

Income of Over 15s: Median weekly individual income \$932 (Syd \$578, Aus \$440). Median weekly household income \$2672 (Syd \$1154, Aus \$1027).

Family characteristics: 804 families, including 472 couple families with children; 262 couple families without children; 63 one-parent families.

Dwellings: 1022, with 947 occupied on 8/8/06; 931 separate houses.

Average household size: 3.0

Bruce Wilson

NEVILLE HYMAN MILSTON 1920 – 2007

Castlecrag mourns Battlement resident of 56 years, Neville Milston. Some 120 friends celebrated his life on 25 July, addressed by colleagues from the North Shore Temple Emmanuel, The Jewish Ex-Servicemen's Association and the Masonic Lodge of Tranquility.

Born 1920 in Leichhardt, then growing up in Coogee, Neville had to leave school at 14 during the Depression to help in his parents' gifts business. In 1938 he enlisted in the Citizens Military Forces at 18 as Hitler entered Czechoslovakia. He joined the AIF in 1941, became a radio operator and was shipped out to Malaya. His 8th Division Signals were ordered to join a British military post, but all had to surrender, and were imprisoned in infamous Changi.

Neville then spent 42 months building the 450km Burma Railway, working from 5am to 6pm on starvation rations and dropping from 60kg to a life-threatening 40kg. More than one-third of his comrades died. Liberated in August 1945 he needed extensive rehabilitation before returning to civilian life, and was awarded the Efficiency Medal. [For recollections see www.ajn.com.au April 2007]

In 1949 he met Madge Grouse, a Jewish ex-servicewoman who had seen duty in New Guinea. They married and moved to Castlecrag in 1951 ready to start living life to the full for their next 50 years together. Their three children – Michael, Richard and Leah (and two foster children) – and "their" suburb absorbed them.



Helping build the Infants School, raising of funds for the Walter Burley Griffin Fountain, the Castlecrag Conservation Society and the annual Red Cross Appeal, working for Meals-On-Wheels and other charitable and community endeavours were all part of community involvement. And in 1981 Neville completed a Bachelor of Arts degree: "to get the education I missed when I was young", he said.

His three loves outside the family were the Australian Labor Party (he was awarded the McKell Award in 2003 for long and distinguished service), the Masonic Lodge, and Liberal Judaism. It appears that his continued active involvement in such community groups was an important ingredient in his physical and mental longevity..... perhaps a lesson for us all.

He was active to his last day, often seen at the local shops, never mentioning his own ill-health, and always a kind word and empathy for others' concerns. He passed away in his sleep. We shall miss his great contribution to our community. Shalom Neville.

Bruce Wilson

L.J. HOOKER

Castlecrag 'The Kings of the Castle'

Over 30 years servicing the community
in Sales and Property Management



Earn 20,000 Qantas Frequent Flyer Points*
when you list and sell through L.J. Hooker.

Good Property Managers win good tenants : try us!

91 Edinburgh Road, Castlecrag NSW 2068

Tel: 9958 1800 Fax: 9958 6063

Email: castlecrag@ljh.com.au

Website: www.ljh.com.au/castlecrag

**Graham King Heidi King
Alex Sassen Brian Thompson**

* Terms and conditions apply to this promotion.
See ljh.com.au for further information, or contact our office for a copy of these terms and conditions.

nobody does it better®

ljh.com.au

Martha's

breakfast lunch dinner

**Open 8am to 3pm; from 6pm
(Sunday to 3pm only; closed Tuesdays)**

83 Edinburgh rd Castlecrag NSW 2068

Phone 9967 8299

SYDNEY Butcher Boys

GOURMET BUTCHERS

Dli 9958 4499
Fax 9327 5758



WILLOUGHBY
CITY COUNCIL

Council News

Willoughby Symphony Salute to the Civic Centre

The Willoughby Symphony held its final and grandest concerts ever in the Willoughby Civic Centre on Friday 27 July (8pm) and Sunday 29 July 2007 (at 2pm). The concerts paid tribute to and farewelled the Willoughby Civic Centre, which has been the Symphony's traditional home for the past 35 years.

The concert, entitled *Civic Centre Salute*, was a tribute to the current Civic Centre as well as a celebration of the history and achievements of the Willoughby Symphony. The program featured more than 15 favourite classical pieces led by the Willoughby Symphony's passionate and charismatic Chief Conductor, Dr Nicholas Milton, including Rossini's *La Gazza Ladra Overture*, Beethoven's *Symphony No. 5* and Handel's *Messiah*, *Hallelujah Chorus*.

The concert also featured the *Willoughby March*, which was composed in 1969 by Albert Keats, the first Musical Director of the Willoughby Municipal Symphony Orchestra, and dedicated to the Mayor, aldermen and citizens of Willoughby. It was first performed by the orchestra on 27 March 1969 and at

the Willoughby Orchestra's first performance in the Willoughby Civic Centre on 28 February 1972.

Willoughby Mayor Pat Reilly said: "During the construction of Chatswood Civic Place, the Willoughby Symphony will perform at venues around the North Shore including the local Zenith Theatre and even the Opera House. In 2010 Chatswood Civic Place will provide the Willoughby Symphony with a state-of-the-art 1000 seat concert hall and 500 seat theatre for their performances."

Rebecca Hill

Willoughby Community Men's Shed

Willoughby City Council officially opened the Willoughby Community Men's Shed 10.30am, Thursday 26 July. Located in the renovated and refurbished Northbridge RSL Hall at 296C Sailors Bay Road; the Men's Shed has been developed by Willoughby City Council in partnership with Uniting Care Ageing Northern Region. A \$39,621 grant from the Department of Veterans Affairs was used to purchase the equipment, tools and dust extraction system.

The Willoughby Community Men's Shed is a fully equipped workshop where skilled and unskilled men can share time with each other, swap yarns and work together on both personal and community projects. The Shed provides both woodworking and metalworking workshop facilities, tools and equipment as well as free use of tools and basic material; providing opportunities for regular hands-on activities for individuals and groups.

Rebecca Hill

Willoughby Spring Festival

This will be the 11th year running for the Willoughby Spring Festival, and possibly our biggest and best. Council staff have worked hard in putting together a brilliant program of events and in obtaining corporate sponsors to help defray the cost of the Festival. A printed program of events is available, and it can also be viewed at www.willoughby.nsw.gov.au

The Willoughby Art Prize, (7 to 16 September) has been very well supported with an unprecedented number of entries, that will present the judges with many challenges. The Street Fair, which takes place on Saturday 15 September, will have a parade of dancers, musicians, local community and sporting groups. As well, there will be an assortment of stallholders on the day, including a veritable treasure trove of temptations for young and old.

During the course of the Festival there will be over 45 events taking place throughout Willoughby City. Council has sponsored some events, in an endeavour to give as much support to local community groups and also to showcase the diverse talent in our midst.

The best African Violets and Orchids will be on display at the Civic Centre; Chatswood Public School will hold a twilight concert and Castle Cove Public School a Jazz Fest; the Workshop Arts Centre will hold a drawing workshop and you could discover the wonderful bike paths in Willoughby – all free events.

I urge all the residents of our City to participate in at least one event during September.

Cr Mary Johnston
Sailors Bay Ward

momo INTERIORS

79 EDINBURGH ROAD, CASTLECRAG
COLOUR AND DESIGN CONSULTANTS
INTERIOR & EXTERIOR

Member of Design Institute of Australia

Tel 9958 6672

Fax 9958 2465

BEN GERSTEL ARCHITECTURE PTY LTD

PH: 9967 0640

Providing excellent design solutions for your renovation or new house with a thorough knowledge of Willoughby City Council's requirements.

Tell your story for years to come

ALBUM MAKING CLASS

Learn how to create personalised photo albums, four styles to choose from – no creativity required. Classes held in your home, at a time that suits you.

Details: \$5 per person, includes all materials, bookings essential.



Contact: Charlotte Hunter
Creative Memories Consultant
Ph. 0425327635

Email: creativememories@aapt.net.au



Northbridge Veterinary Clinic

1/128 Sailors Bay Rd, Northbridge
(cnr Strathallen Ave)

T 9958 4800 F 9958 6800

Consultation by appointment
Undercover parking onsite

Hours of consultation:

Mon-Fri 8am-8pm Sat 9am-noon

Community Notice Board

Community Organisations

Castlecrag Progress Association:

The future of 'Community' in Castlecrag

General Meeting: Tuesday 21 August, 8pm at the Castlecrag Community Centre with surprise Guest Speaker – all welcome (see Notice page 1). Contact details on page 2.

CragSitters:

Family gathering at Stoker Playground, Sunday 9 September at 3.30pm. CragSitters has been set up to give families the opportunity to network with each other and also provide contact with available babysitters in the area. New members, both families and babysitters are most welcome. Email: cragsitters@yahoo.com.au

Castlecrag Conservation Society:

Wildflower Walk in regenerated areas of the Northern Escarpment, Sunday 23 September 10am-12 noon. Meet at the large flat rock opposite 44 Sunnyside Crescent. Harold Spies – 9958 8569.

The Haven Amphitheatre:

"When Camels Could Fly" Sat 22 & Sun 23 September at 2pm. For children 5-12 and their families.

Walter Burley Griffin Society:

Annual General Meeting, Sunday 4 November, Castlecrag Community Centre at 2pm. Guest Speaker Scott Robertson on conservation of Griffin's Cheong House followed by inspection of the work.

Community Events

Early Morning Birdwatch:

Saturday 26 August 8-10am, Harold Reid Reserve, Middle Cove. Join Andy Burton to discover 'What Bird is that?' Di Eva – 9777 7755.

Sydney Opera Society:

Saturday, 1 September at 2pm. Presentation by Stuart Maunder on the *Tales of Hoffmann* at the Presbyterian Church Hall, Cnr Laurel and High Streets, Willoughby. Shirley Robertson – 9605 5851.

A Walk on the Wild Side:

Wednesday 5 September & Sunday 16 September at Harold Reid Reserve, Middle Cove. Join a 3km circuit walk to stretch your legs and enjoy spring wildflowers and spectacular coastal views. Free event organised by Willoughby Council, Phone 9777 1000.

Willoughby Festival Street Fair:

Saturday 15 September 10am-4pm right across the Chatswood CBD. Street Parade at 10.30am, entertainment, stalls and displays. Please use public transport to get there.

Spring Festival Trivia Night:

Saturday 22 September 7.30pm at Willoughby Civic Place (see page 9). Organise a team and phone 9419 6927.

Open Studios at the Workshop Arts Centre:

Saturday 22 September 10am-4pm at 33 Laurel Street, Willoughby. One day drawing workshop for families and friends with admission by donation. Phone: 9958 6540.

The Last Hurrah: Closing Ceremony of the Willoughby Civic Centre:

Saturday 29 September at 8pm for an evening of music and entertainment including a final performance by the Willoughby Wurlitzer and a ceremonial locking of the doors. Tickets \$100, Phone 9777 1000.

Sydney Opera Society:

Saturday 6 October at 2pm. Lecture by Murray Dahm on *Tannhauser* at the Presbyterian Church Hall (as above).

*The Community Notice Board is a service by the Castlecrag Progress Association.
Please contact editors@castlecrag.org.au with details of forthcoming events and activities for inclusion.*



Richardson & Wrench Northbridge & Castlecrag

9958 1200

81 Edinburgh Road, Castlecrag 2068

YOUR PREMIER AGENT

Are you interested to know

- How much your property is worth?
- How long it would take to sell?
- How much would it cost?
- Is there market demand for your property?

If so, contact our office today for Real Estate advice from agents who really know your area and get results.

IT COSTS NO MORE FOR THE BEST

Providing excellence in Real Estate Service
Over 20 Years Real Estate Experience

Mark O'Brien, Manager

www.randw.com.au/castlecrag
castlecrag@randw.com.au

CASTLECrag & isis store

FOR ALL YOUR GIFT AND POSTAL NEEDS

Silver & Fashion Jewellery • Accessories & Cards
Watches & Cufflinks • Education & Soft Toys
Photocopying & Fax Service
Passport Applications & Photos
PRIVATE BOXES AVAILABLE NOW

SALE ON NOW!

20-50% OFF SELECTED JEWELLERY & GIFTS

122 Edinburgh Road, Castlecrag NSW 2068

Phone: 02 9958 8650 or 02 9967 5177

**United
Willoughby**

Your local service station

**Cnr Mowbray &
Willoughby Roads**

**Phone: 9958 5896
9958 6320**

**Manager
John Manoukian**

Mechanical repairs to all makes & models

Authorised RTA Inspection station

Log Book servicing

Air condition service & repairs

Mazda Rotary Engine specialist

Performance & Turbo Charging

Tyres – Steering – Suspension – Brake – Clutch

