

THE CRAG

NEWSLETTER OF THE
CASTLECRAG PROGRESS
ASSOCIATION INC.

Eighty years serving the community
ISSN 0814 - 2054

No. 155

April 2005

Castlecrag Progress Association

6/77 Edinburgh Road,
Castlecrag
Web page:
www.castlecrag.org.au

President: John Steel

Vice presidents: Kate Westoby
Gay Spies

Secretary: Elizabeth Lander

Treasurer: Diana Jones

Committee: Gloreen Goldin

David Harrop
Bob McKillop
Peter Moffitt
Jill Newton
Howard Rubie

Coming Events

Tuesday 3 May:

CPA Annual General Meeting
(see box below)

Sunday 5 June 2005:
Community Fair

Tuesday 23 August:
CPA General Meeting

Please see page 8 for
membership renewals

The Crag is edited by
Bob McKillop 9958 4516
Elizabeth Lander 9958 5384

Please send all correspondence
and membership renewals to
the above address.

The Crag is printed by
Bertram Printing
Bertram Street
Chatswood
Tel. 9415 1070

Willoughby City and Our Future

Our mayor, Cr Pat Reilly, will be guest speaker at the AGM of the Progress Association on Tuesday 3 May. Pat will field questions from Castlecrag residents on topics of concern, but will focus on the new Sydney Metropolitan Strategy and what it means for Willoughby. All residents are urged to attend this important meeting.

While Castlecrag residents visit the Chatswood CBD for shopping and services, few get involved in the planning issues that are shaping its future form.

Under the Metropolitan Strategy, growth in Sydney will be primarily focused in the existing centres and corridors. On the Lower North Shore, Chatswood is a key centre and the railway line is the main corridor. The Strategy seeks to enhance the quality of the centres by obtaining the best mix of homes, jobs, services and other activities.

For Willoughby City, the impact of the growth targets to be attained under the Strategy over the next 30 years will primarily fall on Chatswood and the main transport corridor. Many large infrastructure

towers that will provide 500 additional apartments.

The mayor has indicated that he wishes to outline how Council's support for the Metropolitan Strategy will benefit residents in other parts of Willoughby, such as Castlecrag. With the forthcoming Civic Place complex, Chatswood will have a new 'heart and soul' that offers an exciting range of activities.

Council is also looking at options for more sustainable transport across the city (see page 7) and this is of particular concern to Castlecrag residents. Pat Reilly is keen to hear your views on issues such as these, or other matters that you would like to bring to his attention. Come along and have your say!

Editors



The model of the revised design for Chatswood railway station and transport interchange showing the proposed apartment towers.

investments are being made, including the new Chatswood to Epping Railway, the railway station and transport interchange, and Civic Place. The revised design for the railway station includes three

Castlecrag Conservation Society

2005 GENERAL MEETINGS

23 June 2005

25 August 2005

27 October 2005

**Interesting guest speakers
Come along to the Community
Centre and check us out.**

President: 9958 8569

Castlecrag Progress Association

ANNUAL GENERAL MEETING Tuesday 3 May 2005

(Please note date)

**Castlecrag Community Centre, 8 pm
Guest Speaker:**

**Pat Reilly, Mayor of Willoughby City
'The Metropolitan Strategy and
Castlecrag'**

All welcome. Refreshments provided.
Please park in the street and walk down.

Community Bytes

From our Ward Councillors

Our three Ward Councillors attended the Progress Association meeting on 16 March and Cr Adrian Cox provided an update on matters of interest to local residents.

Adrian advised that the DA for 72 Sugarloaf Crescent had been a contentious and difficult matter, but Willoughby Council will be making an appeal against the recent Land & Environment Court ruling. The future of the heritage-listed Willoughby Incinerator was also considered by Council at its meeting on 14 March. It has resolved to prepare a Conservation Management Plan for the building as a matter of urgency, and will also put the leaseholder on notice that the conditions of the lease have not been maintained. There are significant structural problems with the main chimney, which are likely to require considerable investment.

Lou Levy

Beside the Federation Track in The Keep Reserve is a delightful new timber seat dedicated to the memory of Lou Levy. As reported in *The Crag* 148, Lou and Ann Levy came to Castlecrag in the 1940s and in his latter years Lou delighted in exploring the walkways and reserves of our suburb. Our compliments on this fine feature.

Castlecrag Website

There are new updates on the Progress Association website, including an expanded article on the Castlecrag Heritage Forum with links to transcripts of the proceedings and to relevant Willoughby Council planning instruments. The history timeline is updated and there are recent articles from *The Crag*: see www.castlecrag.org.au

Castlecrag Community Fair

Plans are now well advanced for the 2005 Community Fair (see p.5), which promises to be a great day for all the family. The Progress Association seeks your support on the day, as the Fair will raise funds for important community projects. It has announced that a high proportion of any profits from the Fair will be directed toward the restoration of the Griffin Memorial Fountain in Edinburgh Road, while returns from the *Trash and Treasure* stall will help to cover any shortfalls in the cost of producing and distributing *The Crag* newsletter.

Right Hand Turn Petition

Castlecrag residents have battled to obtain a right-hand turn signal at the Edinburgh Road-Eastern Valley Way intersection for 30 years now (see page 8). So far, our best efforts have fallen on deaf ears, but with the offer by our Local Member, Gladys Berejiklian, to back our cause (page 3), the Progress Association has prepared a Petition to State Parliament to pursue this matter further. We are seeking a strong community response on this matter, so please get behind the Petition. It will be available for signing at the Community Fair.

Bus Stop at 84 Edinburgh Road

Willoughby Council's Traffic Committee has recommended that the existing bus zone and shelter outside 82-84 Edinburgh Road (Route 267 stop) be relocated 30 metres further west with No Stopping restrictions being extended to the new location. This is in response to concerns regarding conflict over the merging of westbound lanes of traffic at this location.

L.J. HOOKER

nobody does it better

Castlecrag, 'The Kings of the Castle'

- Over 30 years servicing the community in Sales and Property Management
- Earn 20,000 Qantas Frequent Flyer Points when you list and sell through L.J. Hooker
- Good Property Managers win good tenants: try us!
- Justice of Peace at the office

91 Edinburgh Road, Castlecrag NSW 2068

Tel: 9958 1800 Fax: (02) 9958 6063

Email: castlecrag@ljh.com.au

Website: www.ljh.com.au/castlecrag

Graham King
Heidi King
Helen Young

Graeme Moat
Brian Thompson

ZEROPEST

Pest Management Systems

David Howell

9967 5000

ZEROPEST PTY LTD. 99 THE BULWARK, CASTLECRAG
NSW 2068

FAX. (02) 9958 5736 P.C.REG 1456

CASTLECRAG MEATS

- Award Winning Butchers -

Specialists in free range and organic products

Free home delivery Tuesdays & Fridays

Corner Raeburn Avenue and Edinburgh Road

Phone **9958 4274**

Fax **9967 4181**

President's Musings

This issue of *The Crag* again exemplifies the range of issues that the Progress Association engages with to achieve benefits for our community, whilst striving to maintain the natural beauty and heritage values which contribute so much to our lifestyle in this special place. Sometimes it takes a while to achieve progress on important everyday matters, such as traffic safety, and extraordinary measures are required.

The turn for westbound traffic from Edinburgh Road onto Eastern Valley Way has been a vexed issue for 30 to 45 years – depending on who you talk to! We have decided to increase the pressure on our State Legislature by filing a petition urging the need for a right-hand arrow to improve safety at this very busy intersection. This will only succeed with strong community support and it was pleasing to receive more than 200 signatures at our initial 'busking' at The Quadrangle on Saturday, 2 April. You will see us there most weekends over the next couple of months so please sign up if you have not already done so. Our Local State Member and Sailors Bay Ward Councillors have expressed their support for our action.

Strong community support is also required to overcome the recent and increasing epidemic of graffiti, which threatens to blight our suburb. We can all help to obliterate this menace.

Finally, we look forward to your participation in the Castlecrag Fair. Apart from the fun of a truly community event, in past fairs the Griffin Centre carpark has proved to be an immensely successful venue for sharing a range of activities for all ages. The proceeds from your enthusiasm will enable funds to be allocated by the Progress Association to the restoration of the Griffin memorial fountain at the entrance to Sortie Port.

John Steel

Our MP and Castlecrag

The Member for Willoughby, Gladys Berejiklian, highlighted Castlecrag's natural beauty and heritage values in her address to the Progress Association's general meeting on 16th March. She said she had enjoyed participating in guided walks around the suburb.

Ms Berejiklian provided feedback on the issues that Castlecrag residents had raised with her over the past two years. Traffic matters have been a dominant concern, with a negative response by some residents to what they regarded as the planned 'traffic impediments' on Edinburgh Road and there have been on-going complaints about the lack of a right-hand turn at the Eastern Valley Way traffic lights, making this turn very dangerous. The limited east-west bus services from Castlecrag and Northbridge to Chatswood are also a concern.

In response to questions from the floor, Gladys offered to pursue the provision of a right-hand turn at the Eastern Valley Way traffic lights on behalf of Castlecrag residents. She said that a well-supported petition would assist and she urged the community to back this initiative.

The undergrounding of overhead cables is also an issue that is regularly raised. Gladys said that this also a matter of concern for Cammeray residents and, in her view, it is a matter that is rapidly gaining a groundswell of support across Sydney.

Turning to Willoughby-wide matters, Ms Berejiklian stated that the upgrading of the Chatswood railway station and bus interchange was desperately needed, but she felt Willoughby City was being asked to pay a high price in the form of high-rise apartment towers that exceeded existing planning controls. In response to a question

about the Government's decision not to pay Section 94 contributions to Willoughby City Council, Gladys said that she had only found out about this at the Federation of Willoughby Progress Associations' meeting on 12 March. The Federation had taken this issue up with the Minister of Planning and she would also pursue this on their behalf.

As the Shadow Minister for Mental Health, Ms Berejiklian also expressed her concern over the closure of the mental health facility at the Chatswood Community Health Centre in Hercules Street and the threatened closure of other units at the Centre. Several residents at the meeting expressed their strong support for community-based mental health services. They were advised that the Federation of Willoughby Progress Associations had lobbied the mayor to call a public meeting on this matter and he advised the Council Meeting on 14 March that he will do so.

Editors

Graffiti in Castlecrag

At the March General Meeting of the Progress Association, a number of residents expressed their concern at the high incidence of graffiti on buildings and public places in Castlecrag in recent months.

Early removal is important. If you see graffiti on Council-owned property, such as parks amenities and equipment, roads and street signage and bus shelters, please do your bit by contacting Council quickly and staff will be sent for its quick removal. If you see graffiti on items belonging to public utilities, such as the RTA, Australia Post or Energy Australia, please report it to these authorities. And if you are a property-owner with an accessible, inviting wall, you should seek advice on making it graffiti-proof.

You want
results!

Greg Gerstl is the talk of the town. Everybody is getting to hear about the real estate agent who really knows his business and can take the hassles out of selling your home.

You can always rely on Greg Gerstl to be quick off the mark if you need his advice or assistance. If you are serious about selling your property and want it done quickly and for the best possible price, **call Greg now and let's get down to business!**



You need

Greg Gerstl
9958 3777
0414 234 004



PRD nationwide

CASTLECRAG • NORTHBRIDGE

79 Edinburgh Road, Castlecrag
Phone: 9958 3777. Fax: 9958 3711
Email: greg@prdn.com.au
www.prdn.com.au

Doggy Do and Doggy Don't

We all love our dogs, and the local canines appear to be a well-trained, obedient lot when leashed and walking with owners along streets or visiting the Quadrangle.

When it comes to the many bush reserves within the Castlecrag area, however, some owners are actively unleashing and allowing their animals to run unchecked in these areas. This is **against Council regulations**. No Castlecrag reserves are designated 'unleashed dog exercising areas'.

The Willoughby Council pamphlet 'Dog Control in Willoughby City' provides a map and list of parks allocated for unleashed dog exercise areas. There are 13 parks available overall in the Willoughby Council area, the two closest to Castlecrag being:

Market Gardens Park: Alongside 52 Mowbray Rd, bordering Eastern Valley Way - No restrictions.

Willoughby Park - Oval No. 2: Warrane Rd, Willoughby. Restrictions: Allowed times:

6 am to 8 am and 4.30 pm to 6.30 pm.

Tunks Park (North Sydney Council), which can be accessed from Northbridge, is also a popular unleashed dog exercise area.

Although most dog owners are responsible in cleaning up their leashed dog faeces, this is not so easy to take care of when the dog is running loose in bushland. Added to this, the smell of urine (which obviously cannot be cleaned up) and normal 'doggy footprint smells' on bush tracks, leave an odour which is an 'alarm warning' to all wildlife, making them feel unsafe in that location. Furthermore, dogs playfully bouncing through the reserves, cause damage to regenerating native seedlings and immature plants.

Over the past ten years our reserves have undergone a continuing regeneration program carried out by local resident volunteer



groups trained by Council in bushcare techniques. This has brought about a remarkable improvement to once weed-infested reserves. Now, with this improved habitat, re-appearance of fauna such as the swamp wallaby, bandicoot, echidna and brush turkey, is taking place. This influx is also attributed to the decline of the fox population through a successful combined-Councils fox-baiting program, over the past 4 years.

Let's trust that the simple regulations governing these Wildlife Protection Areas [see *The Crag* 153, page 4] will be adhered to, thus giving the wildlife a greater chance of safe haven within our community. This is not only of benefit to the flora and fauna, but all residents who enjoy walking our Castlecrag reserves as well.

For further information on this subject, visit Willoughby Council's website: www.willoughby.nsw.gov.au; Heading 'residents' / 'animals'.

A Local Resident (name supplied)

Griffin Reserves

The Griffin Reserves Advisory Committee, comprised of Castlecrag residents and chaired by Cr Adrian Cox, meets on a regular basis to review progress on the restoration and management of the Griffin Reserves and Walkways in the suburb.

The work in the Reserves is being carried out in accordance with Griffin Reserves Plan of Management (September 1997). Copies of this are available in the Castlecrag and Chatswood Libraries

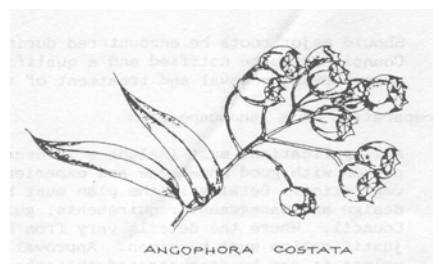
On 17 March the Committee reviewed the draft Action Plan for Turret Reserve. Council officers will be approaching neighbouring residents to discuss these proposals over the coming weeks.

The Advisory Committee proposes to review the Plan of Management during 2005. Feedback and comment from local residents is welcome.

The Committee has congratulated Council on its efforts in restoring Oriel Reserve. There has been a wonderful strike of acacias following the recent burn.

Willoughby Council's bushcare unit will be mounting a display at the Castlecrag Community Fair on 5 June. Check it out and put forward your suggestions for improving our Reserves.

Bob McKillop



ISIS STORE

FASHION, JEWELLERY, HOMEWARES
GIFTS FOR ALL OCCASIONS

Made to measure Curtains Service— We come to you!
122 Edinburgh Road, Castlecrag NSW 2068
Phone: 9967 5177

J A S O N L I L A W Y E R S

JLL

Jason TK Li

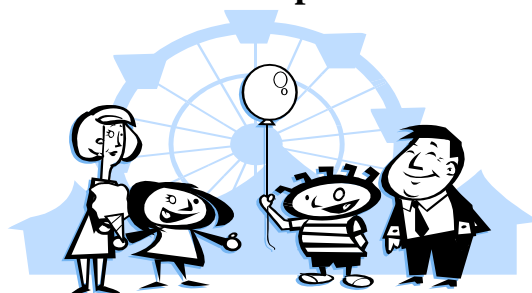
BBus, LLB (Hons), LLM

Lawyer and Notary Public

Phone: 0411 567 776; 9958 3828 (ah)

CASTLECRAG FAIR

Sunday 5th June 2005
10am – 3pm



**Live Bands and
Dancing
Trash & Treasure
Magicians and
Jumping Castles**

If you are interested in sponsoring, having a stall or being involved, please call:
Gloreen Goldin 9967 9100

To arrange for your dance or music group to participate, contact
Jennifer Kos 9405 5117

The Castlecrag Fair is on again this year on Sunday the 5th June 2005. Experience the fun of the fair, a community get together, with many stallholders to tempt the crowd with exotic and interesting wares. Be entertained by local dance and music groups both young and old. Satisfy those hunger pangs with a good old fashioned Aussie snag or food from our cafes and restaurants.

**Street Theatre
Bush care
Fashions
Clowns Rides
and much more!**

Setting up the fairground and cleaning up afterwards is a task that is made easier by many hands. We need your help. Please call:
Gloreen Goldin 9967 9100

Trash & Treasure

The Progress Association is again seeking pre-loved items for the *Trash & Treasure* stall at the Castlecrag Community Fair. The *Trash & Treasure* stall is the major income-generating activity of the Association and helps to maintain our services, including the production and distribution of *The Crag*. Here is your chance to create space in your home by cleaning out that old cupboard for a good cause!

We can arrange for collection and storage of your goods.

If you have items for collection, please contact:

Kate Westoby 9958 0215



Castlecrag Fruiterers

Your premium fruit and veg supplier

Shop 2-4 Quadrangle Shopping Village
100 Edinburgh Road CASTLECRAG 2068
Tel. 9958 2875 Fax 9967 2874

- * Personal service is our speciality
- * Open 7 days
- * We deliver to your home or business
- * Fruit baskets and platters available for every occasion
- * We also stock organic produce

Moran Realty



Di Page Admin Tanya Raitsina Reception Joanne Moran Property Manager Chris James Field Services Roger Page Principal Sales & Marketing David Moran Sales

SERVING: Castlecrag, Castle Cove, Middle Cove, Northbridge and Willoughby

- ◆ Full service family-run business
- ◆ Sales and valuations
- ◆ Free market appraisals
- ◆ Referral service
- ◆ Property management
- ◆ Justice of the Peace
- ◆ Auction services
- ◆ Document copying service
- ◆ Property inspections

Call: Roger, David, Joanne or Di

9958 0124

Conserving Our Bushland

Local conservationist Gay Spies complimented Willoughby City Council for its leadership in the management of our unique bushland at the Castlecrag Progress Association meeting on 16 March.

Gay reviewed the progress made by local conservationists in Willoughby over the past 30 years, noting that the Castlecrag community can trace the achievements of recent years back to the fight from 1952 to stop the extension of the Warringah Freeway through the suburb. From this group, a project to restore the Haven Amphitheatre emerged and the Castlecrag Conservation Society was established in 1977. Beverley Blacklock, a pioneer in bushland regeneration techniques, played a key role at this time.

Soon after their arrival, Gay and Harold attended the first bush regeneration training course conducted by Joan Bradley and became actively members of National Trust bush regeneration teams. Their efforts were not maintained due to the then random burn-

ing carried out by Willoughby Council. It was this action that provided the impetus for the establishment of the Willoughby Environment Protection Association (WEPA) in 1981. It was launched at a packed public forum on bushfire.

Following this, a Plan of Management for Bushland in Willoughby was drawn up – the second in Sydney. WEPA members initiated the Sugarloaf Bush Regeneration Project in 1985. Although WEPA was successful in gaining external grants, these covered only primary work, not maintenance, which is the most important part of all bush regeneration work. WEPA was able to get Council's support for maintenance activities in 1987.

Major changes came with the Local Government Act of 1993, which revolutionised the way Councils were required to conduct their business. Willoughby was fortunate to gain new officers who understood bushland management. Under their guidance and with

community input, respected consultant Ian Perkins updated the Bushland Plan of Management. Action Plans are prepared for each reserve. With these very positive changes, Willoughby Council has taken over responsibility for many of the things that WEPA initiated and it has now gained a reputation for its leadership in the conservation of our unique bushland.

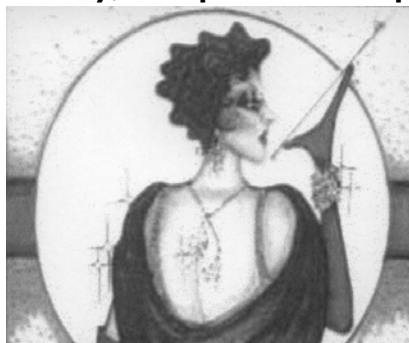
Gay concluded by saying that these developments have been most encouraging, but the need to maintain 'eternal vigilance' is the key message. She concluded by saying we need more people to become involved in conservation actions. This can be as easy as creating sustainable habitat in our own gardens, particularly where it adjoins reserves. Private gardens are always a potential source of new weeds and we all need to be vigilant to guard against their escape into the bush. By creating our own bit of bush we can have endless pleasure as native fauna return to the garden.

Haven Banquet Cabaret Saturday, 30 April 2005 at 7pm

Banquet: Five courses prepared by Bai Yok Modern Thai Cuisine. All crockery, cutlery, wine glasses, iced water bottle supplied (BYOG).

Cabaret: A musical story in three acts woven between banquet courses by six professional singers traversing musical comedy, jazz, Latino and operatic genres.

Venue: If fine, on the stage of The Haven Amphitheatre. If wet, at Warners Park Community Centre, The Outpost, Northbridge.



Dress: 'Black Tie & Ugh Boots' or 'Sequins & Sandals' (prize for most creative outfit).

Stage seating: prebooked @ \$50/head for the Banquet & Show (9 table x 8 seats)

Dress Circle 'A' Reserve: prebooked @ \$15/head for Cabaret (20 available. Ensures wet weather ticket).

Dress Circle (other): on-the-door @ \$15/head (up to 200 available)

Early bookings essential (no refunds after 23 April). Seats strictly reserved in order of payment. **Bookings & payment** at PRD Nationwide, Castlecrag; Phone 9958 3777.



Northbridge Bowling Club

Make Northbridge your Club! Try your hand at bowls – it's good exercise and lots of fun. Regular playing days are Saturday, Monday, Tuesday (ladies only) and Wednesday and there are frequent social activities.

Superb location and excellent facilities with licensed bar.
Phone 9958 5188 for information

momo INTERIORS

79 EDINBURGH ROAD, CASTLECRAG
COLOUR AND DESIGN CONSULTANTS
INTERIOR & EXTERIOR

Member of the Design Institute of Australia

Tel 9958 6672

Fax 9958 2465



Council News

Civic Place

The design and funding for Willoughby City Council's Civic Place remain on track as the project moves to start stage three of its planning process – Schematic Design. Willoughby Mayor Pat Reilly said: 'We have finalised the architectural brief and costing review under stage two's conceptual design and the projected costs are on track and well within the expectations of the recent Price-waterhouse Coopers' review of Council's funding plan for the project.' He continued, 'Civic Place will be the icing on the cake of an upgraded transport interchange, which continues down through Chatswood Mall to Civic Place.'

Council voted to move on to the Schematic Design stage of Civic Place at its meeting on 14 March 2005.

Recycling Cans Campaign

Willoughby City Council launched its 'Yes you can recycle cans' recycling campaign on April 3, 2005. It aims to reinforce the message that all steel and aluminium cans can be recycled, from pet food and tuna cans to soft drink and hairspray cans. Another message in the campaign is to avoid putting



plastic bags in recycling bins by keeping recyclables loose.

While Willoughby Council residents are amongst Sydney's best recyclers, there are still many areas that can be improved. Aluminium and steel food cans are still not being recycled as much as they should be. These cans just need to be rinsed and lids removed.

Aerosol cans can also be recycled.

To use the recycling system correctly place recyclable items loosely into the yellow lidded recycling bin. Materials placed into plastic bags cannot be recycled and can contaminate the entire truckload. Please do not place meat trays, crockery or china, foam boxes, polystyrene, clothing or plastic wrapping in the recycling bin.

Samantha Glass

Sustainable Transport Program

As part of its *e.restore* program, Willoughby Council is working to establish a sustainable transport program for the city. A multi-disciplinary consulting team is assisting Council officers to develop six modules under the program as follows:

1. **Public Transport:** The objective is to introduce a pilot Flexible Demand-Responsive (DRT) service. Council is working with the Ministry of Transport and State Transit to initiate the pilot scheme in the East Chatswood industrial area.
2. **Walking and Cycling:** Transport Access Guides are being prepared on how to reach key venues by active transport.
3. **Road Management:** Major projects and Council's car parking policy have been reviewed to better support sustainable transport. The bike plan is being updated.
4. **Integration of sustainable transport and land use:** The program seeks to maximise opportunities for public transport, walking, cycling and car-sharing.
5. **Integration of sustainable transport with Council policies:** Access and mobility issues have been incorporated into Council's social plan.
6. **Education, communication and marketing:** Sustainable transport messages have been included in stalls at public events and a pilot Sustainable Transport Expo is proposed.

The principles have been applied to the redevelopment of the ABC site at Gore Hill and industrial areas.

LILLY PILLY
indigenous landscapes

Specialising for 12 years in
Native Flowering Gardens
Low Maintenance
Sandstone Walls Paving & Features

Richard Blacklock
0417217937

Martha's

breakfast lunch dinner

Open 8am to 3pm; from 6pm
(Sunday to 3pm only; closed Tuesday)

83 Edinburgh rd Castlecrag NSW 2068

Phone 9967 8299

History of Castlecrag Part 13

1981 The Progress Association's new committee, headed by Gavin Thomas as president, sought to develop a comprehensive plan for **improved traffic management** in Castlecrag. A Traffic Committee was formed and conducted a survey of traffic problems. There was a strong response to the survey, with the need for a right-turn at the Eastern Valley Way traffic lights a dominant concern.

1981 Willoughby Municipal Council established the Castlecrag Advisory Committee of eleven local residents in June to prepare the **Castlecrag Local Environment Study**. Issues of concern for the Committee were the number of unsympathetic developments in the suburb, changes to the streetscape through replacement of the original stone kerbing and the need for stronger measures to preserve the foreshore bushland.

1981 The **Willoughby Environmental Protection Association (WEPA)** was established with Castlecrag residents Gay and Harold Spies playing a prominent role. WEPA pursues conservation of the natural bushland and landscape. It has opposed encroachments on reserves and public space, unsympathetic Development Applications adjoining bushland, sale of open space and community land, and lowering of the Foreshore Building Line. WEPA successfully lobbied WCC for the establishment of the Bushland Advisory Committee in 1990. It nominated the Middle Harbour Landscape Conservation Area for the Register of the National Estate and the Register of the National Trust. Gay Spies received a Medal of the Order of Australia (OAM) in the 2005 Australia Day Honours list for her work with WEPA.

1982 The Progress Association, led by Eric Kaye, made a number of presentations to the **Kirby Inquiry on the future use of the Warringah Freeway Corridor**, backed by a report by the Total Environment Centre commissioned by the Progress Association. 67 Castlecrag residents also made submissions. The recommendations of the Inquiry supported the Progress Association's position, that the corridor not be reinstated, the preservation of the Northern Escarpment as open space and disposal of property.

1983 **Rita Kaye** took over as editor of *The Crag* with Ann Korner as her assistant.

1984 Consultant landscape architect, John Butterworth prepared a **'Walking Trails Development Plan'** for Willoughby Council. As a result of Council's inaction on the above plan, the Progress Association formed the Castlecrag Walking Trails Subcommittee. It undertook numerous site inspections and prepared a report, 'Recommendations for Walking Trails in Castlecrag', for the restoration of walkways in Castlecrag. The report was submitted to Council in November 1987.

1985 WEPA initiated the **Sugarloaf Bush Regeneration Project**, which continues to the present day with the assistance of grants.



Castlecrag residents Bim Hilder (left) and Frank Duncan at the CPA quilting exhibition in 1985.
Photo: Rita Kaye

1985 The Progress Association celebrated its **60th birthday** with a quilting exhibition at St James Church. The event attracted several early residents, including Frank Duncan, Bim Hilder and Phyl and Michael Stoker. The president, Dianne Street, welcomed the guests and Alderman Eric Kaye opened the exhibition. Quilters from all over the State were represented and \$1800 was raised, which was donated to the bus shelter funds and maintenance of the Haven Amphitheatre.

Bob McKillop, Elizabeth Lander and James Weirick

 **Richardson & Wrench**

Northbridge Castlecrag 9958 1200
81 Edinburgh Road, Castlecrag 2068
YOUR PREMIER AGENT

Are you interested to know

- How much your property is worth?
- How long it would take to sell?
- How much would it cost?
- Is there market demand for your property?

If so, contact our office today for Real Estate advice from agents who really know your area and get results.

IT COSTS NO MORE FOR THE BEST
Providing excellence in Real Estate Service
Over 20 years Real Estate experience
Mark O'Brien — Manager
www.randw.com.au/castlecrag
castlecrag@randw.com.au

Castlecrag Progress Association Inc. Membership Form

ANNUAL SUBSCRIPTION FOR 2005

I wish to renew / apply for membership of the CPA Inc., and enclose payment for: \$ _____ (\$10 per person; \$5 per student)

If you wish to make a donation, this will be most welcome. I enclose my donation of \$ _____

Name: _____

Address: _____ Ph: _____

Please post to the Treasurer: 6/77 Edinburgh Road, Castlecrag 2068 OR hand in at the Newsagency