

Progress Association Committee

- President: Kate Westoby
- Vice Presidents: David Harrop, Bob McKillop
- Secretary: Elizabeth Lander
- Treasurer: Diana Jones
- Committee: Adele Barnett, Peter Moffitt, Howard Rubie, Gay Spies, John Steel

General Meeting

28 August 2001

Your Say on our Suburb

Castlecrag Community Centre
8pm

AGENDA

Bob McKillop will lead a forum on future development scenarios for Castlecrag, Willoughby and Sydney:

- Population policy
- Traffic and Transport
- People and Place – our heritage
- Community: the needs of youth and the aged
- Open space & biodiversity
- Energy use and sustainability

Castlecrag Progress Association Inc.
6/77 Edinburgh Road, Castlecrag

The Crag is edited by
Kerry McKillop (9958 4516) and
Elizabeth Lander (9958 5384).

Please send all correspondence and renewals to above address..

(membership form on page 6)

Oh What a Lovely Fair!

Our Castlecrag Community Fair on 27 May was an outstanding success. Large crowds came and had fun, which was the intention. We also sought to provide a venue where all the community groups in Castlecrag and our local business community could participate in a special event that brings us together as a community, and provides each group with the opportunity to promote their wares and interests.

In organising the Fair, the Progress Association sought an event to bring our community and business. We had:

- the full and enthusiastic participation of all 14 community groups
- contributions from all but three of the suburb's retail and service businesses
- the support of Willoughby City Council through the presence of the Mayor, the displays by both its bush care and environmental departments and its assistance with road closures and services.

There were excellent attendances at the community church service, the evening concert at the amphitheatre and the Fair itself. Compared with last year, the peak crowd was larger, but it tailed off more quickly after 2pm. Our estimate is that about 1200 to 1500 people attended. Next year we plan to extend the entertainment activities.

Individual community groups also report they had a very successful day. Feedback indicates that both enquiries and funds raised were up, compared with the inaugural fair last year.

While many of our retailers say that they support the fair for community involvement purposes, rather than strictly for commercial return, we feel that this is an area which needs more attention in future. We need to find ways to help the retailers to participate more fruitfully and to get more people to walk along towards The Quadrangle, so the fair can benefit the shopping centre as a whole.

Andrew Kirk

Below: Standing room only – part of the crowd at the 2001 Castlecrag Community Fair on 27 May.



The Community Forum

Come and have your say at the General Meeting of the Progress Association on **28 August**. A Residents' Forum will provide a framework for local residents to express their views on the development issues that might shape the future of our suburb, Willoughby City and Sydney generally.

I will provide an introduction to some of the issues that confront

communities here and overseas, but the purpose will be to create the opportunity for dialogue on the things that concern the people of Castlecrag.

Perennial issues of traffic and transport are likely to emerge, but there are also other themes of concern to many. A DA currently before Council for older people and people with a disability at 82 Edinburgh Road

under SEPP 5 provisions will be of interest to many. There are also debates concerning the future use of Warner's Park and the former Women's Bowling Club there, the development of the Civic Place site in Chatswood and public transport. Come and have your say 28 August. Refreshments will be provided.

Bob McKillop

Castlecrag's WILdlife

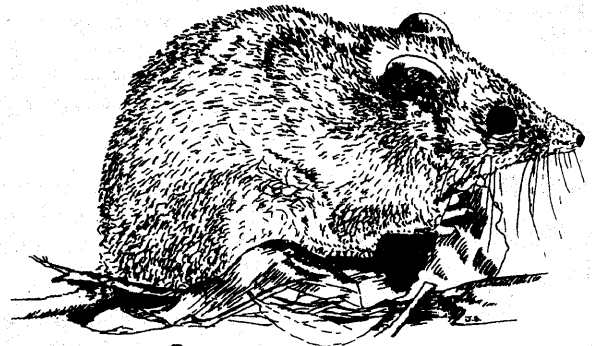
The findings of last years' fauna study of bushland reserves have revealed some interesting and unexpected results on native animals in Castlecrag and Middle Cove! This fauna study is the first ever to be conducted in the Willoughby Council area and was undertaken by Dr Arthur White from Biosphere Environmental Consultants.

Noteworthy mammals include a Short-beaked Echidna, Sugar Gliders, Gould's Wattle Bats and Brown Antechinuses. Apart from the echidna, antechinuses are the only native ground-dwelling mammals left in bushland areas in Castlecrag and Middle Cove. They are fascinating little creatures only 10cm long, with a tail of equal length, that have a pouch for their young and which feed on beetles, spiders and cockroaches. The antechinus is well known for the reason that the males die from stress at the age of 11 months after a few frenzied days of mating! Interesting reptiles and birds include the Southern Leaf-tailed Gecko, the White-bellied Sea-Eagle and the Whistling Kite, as well as some threatened species. These threatened species are the Powerful Owl, Sooty Owl and the Red-crowned Toadlet and are especially precious because there are so few left in New South Wales.

As a resident of Castlecrag there are a number of things that you can do to help these special animals to survive:

- **Dispose of garden waste properly** through Council's Green Waste collection, rather than dumping it into the bush. This dumping is noted in the Fauna Study report as one of the major impacts on native animals in Castlecrag for two reasons. The physical act of dumping itself can destroy animal habitat, plus the plants and weeds that are dumped spread into the bush and take over native plants.
- **Create a Bush Friendly Backyard** (as discussed in the last issue of The Crag) and remove any weeds to stop them spreading into the bush, where they destroy the natural habitat of native animals.
- **Keep your cat inside at night**, as the mammals and owls found in Castlecrag are most active at dawn & dusk and this is when they are most vulnerable to attack. Doing this will also reduce the risk of your cat being injured from a road accident, dog attack or from fights with other cats.
- **Keep your dog on a leash when walking in bushland areas.** Unleashed dogs can easily disturb and attack animals like Blue Tongue Lizards. During the fauna survey more dead Blue-tongue lizards were seen than alive, and almost all of the dead lizards had been killed by dog attack.

For more information on how you can help Castlecrag's wildlife survive, please call **Erika Klimpsch**, Catchment Education at Willoughby City Council on **9777-7942**.



Brown Antechinus

L.J. HOOKER CASTLECRAG

- We're on the web! www.ljhooker.com.au/castlecrag
- Excellent window display to buy, sell or lease your property
- Friendly, well-trained staff to look after your needs

When you list and sell your property with

L.J. Hooker Castlecrag, earn:

25,000 Bonus Reward Points

on your Telstra Visa Card

91 Edinburgh Road, Castlecrag NSW 2068

Tel: 9958 1800

Fax: (02) 9958 6063

Email: castlecrag@ljh.com.au

POST OFFICE CASTLECRAG

Open: 9.00am Monday-Saturday
Close: 5.30pm Mon-Friday, 12.30 Saturday

Shop 17 The Quadrangle Shopping Village
100 Edinburgh Road, Castlecrag

TEL. (02) 9958 8650 FAX (02) 9958 6909

General postal services including parcel post
& express courier to 20kg of weight

BANKING AT CASTLECRAG POST OFFICE

The following *Giropost* agency arrangements are available for 'personal account' deposit and withdrawals:

Adelaide Bank	Hong Kong Bank of Aust.
Bendigo Bank	2 MB Building Society
Citibank	Metway Bank
Commonwealth Bank	St George 'green' card

CREDIT UNIONS: Additional unions are joining Giropost

IN-HOUSE SERVICES: A range of services including photocopying, laminating, facsimile, binding, passport processing (by appointment), personalised cards/labelling, free strapping on private or business articles postage-paid at Castlecrag Post Office.

Kate Westoby, Madam President

Kate Westoby was elected as President of the Castlecrag Progress Association at the AGM on 3 June. Kate is a Teacher Librarian at Castle Cove Public School and is mother to Emma, Jessica and Jake. She has lived in Castlecrag for 21 years and has served on the Progress Association Committee since 1984, and has been involved in many spheres of our community's life.

With Andrew Kirk, Kate has co-ordinated the Castlecrag Community Fairs in 2000 and this year. These have helped to develop and strengthen ties between the various local groups and to alert residents to all that is available in our beautiful suburb. She is keen to build on this base over the coming year.

Kate notes that among other issues the CPA continues to have input into planning issues, the retention of the RTA/DUAP land on the abandoned Warringah Freeway, future use of the former Northbridge Women's Bowling Club and the use of Drainage Reserves. Also, that the Committee meets monthly and 'keeps the home fires burning'.



Kate sends a warm invitation to all residents to come to our next General Meeting on 28 August to express your views, and to enjoy some social interaction over refreshments after the meeting.

Editors

Treasure at the Fair

The Progress Association wishes to express its thanks and indebtedness to **Kathy Rosenmeyer** and her helpers for their wonderful efforts on the *Trash and Treasure* stall at the Fair. Kathy spent the whole day sorting donations to the stall into treasure for the right buyer who came along! A big **thank you** also to the many residents who so kindly donated items for sale on the stall.

The profits from the stall have given the Progress Association a secure financial base for the coming year. Overall the Fair's surplus was more than three times last year's. It will be itemised in the Association's audited and published accounts and is quarantined from our other funds.

The Walsh's Day at the Fair

After counting down the 'sleeps' for more than a week, I began to feel nervous that I may have oversold the big day of the Castlecrag Fair to Peter, Kate and Christian. I needn't have worried. As we steamrolled into the carpark in the oversized stroller their eyes lit up! The sunshine was glorious.

"I want a balloon!". ... "I'm hungry"... "Drink of water?"...

At the first sign of chaos, husband Craig took the opportunity to bee-line it to the *Trash and Treasure*. I decided to take the easy option.

"Balloons?.. with jelly beans attached?.. no problem! one each!" "Something to eat? Well, take your pick!" Spanokopita and ice-cream has never been my idea of a great combination, especially, as my older son informed me, it was imperative to eat the ice-cream first to stop any meltdowns, thus allowing the spinach parcels time to cool. Who was I to argue?

Untangling those darned balloon strings kept me busy, but the kids managed to zip off and sample all of the freebies on offer.

"Mmmm, that juice was good Mum!"

"Hey mum, that lady gave us bar-b-que'd sausages and they were delicious!"

Out of the corner of my eye I spied my husband...No trash thank goodness (the garage couldn't have coped) but he was mightily weighed down with two bags of books. "There's some great stuff in there!"

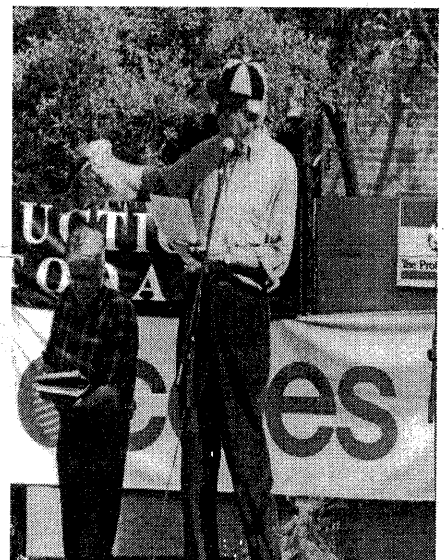
Flipping through, I noted 'The Gregory's guide to sailing and boating' (circa 1960), 'The Shadow of Vesuvius', all about Pompeii, and something about World War Two, which looked as though it had been carried around the warfields! He was wrapt.

We then decided to take part in the auction, and thankfully, just missed out three times!

By now, two hours had passed. The kids were sugar-high and baby Christian was overtired. We pulled away from the throng with one shouting, another one crying, the other one yelling out repetitive goodbyes to her schoolfriend. Each had something stashed in their bag. Learner chopsticks for the younger two and a maze puzzle for Pete.

A grand day out!

Sandra Odorisio



David Harrop and John Steel in action as auctioneers at the Community Fair. The Walshes kept missing out!

Be the Eyes and Ears of the Bush!

We know there is nothing new under the sun but it's still amazing how residents continue to chop and lop protected trees and dump garden refuse in the bushland reserves!!!

Don't they know? Don't they care about protecting and caring for the wonderful area that they live in? Do they realise there are so many local residents who have put so much time and effort into helping to regenerate the lovely foreshore and pocket reserves that characterise Castlecrag.

When Walter Burley Griffin first came to Castlecrag the ridge top area had been cleared extensively. It was always Griffin's vision to incorporate the bushland into his designs and he fiercely protected and nurtured what was left behind. Because of Griffin's vision we can enjoy the lookouts, vistas, rock outcrops and unique native flora and fauna.

Sorry Walter, but unfortunately bush vandalism is occurring throughout Castlecrag.

Council is now considering other measures to ensure residents understand they cannot destroy bushland and get away with it. It's only a matter of time before giant sails are put up where a beautiful tree once stood! It really would be effective but not fair to make others pay for the selfish acts of just a few.

It now comes back to the local community. As members of the community, being vigilant, aware and protective of your bushland will help us to stop these destructive acts. Prevention is always better than cure. Be aware of what is happening in your local bushland reserves.

If you see any acts of bush vandalism take a photo or get the number plates of the culprit and call Willoughby City Council Officers on 9777 1000.

Sydney Opera Society

Did you know that the Sydney Opera Society lies hidden in the cultural life of Castlecrag? It consists of a small group of dedicated opera lovers who have been meeting for approximately 25 years. The members enjoy studying, listening to and attending performances of opera (in Sydney, Glyndebourne, Bayreuth or elsewhere!). The Society was fortunate to have the late Professor Donald Peart of the University of Sydney's Music Department as a lecturer during its first seven years, and since then other eminent music professionals have attended as lecturers at the Society's monthly meetings. **Nancy Fleming**, the president, extends the warmest of welcomes to visitors and she can be contacted on **9958 3110**.

Opening of Griffin Federation Track Sunday 16 September

In 1999, the **Walter Burley Griffin Society** won a Centenary of Federation grant from the Commonwealth Government for the construction of the **Griffin Federation Track** linking the Griffin Conservation Area in Castlecrag through Northbridge to the Willoughby Incinerator. This project which has involved the successful collaboration between the Society and Willoughby City Council, is now close to completion, and will be officially opened by the Hon. Joe Hockey and the Mayor of Willoughby, Cr Pat Reilly at **10.30am on Sunday 16th September**. To celebrate the opening, a program of film and walks is being organised as follows:

- * The film, *City of Dreams: the collaboration of Marion Mahony and Walter Burley Griffin* will be screened at the Castlecrag Community Centre, The Rampart at **11.15am, 12.15pm, 1.15 and 2.15pm**.
- * **Guided walk** of the Griffin Federation Track at **11.00am**. Numbers limited - bookings essential, telephone **Di Eva 9777 7755**.
- * Guided walks of *Images in Time : 80 Years of the Griffins' Castlecrag*. Photographs by Max Dupain of some of the Griffin houses taken in the 1960s, and historical photographs from the

1920s displayed close to their subjects, will be part of these one hour walks. Walks will commence at **11.30am, 12.00, 12.30pm, and 1.30 pm**.

Cost \$10 adult, \$7 concession, \$24 family; includes **Guide Program** and **Children's Quiz Sheet**. Tickets will be available on the day at the top carpark, corner of The Postern and Edinburgh Road, Castlecrag.

Adrienne Kabos

Good news for Haven Amphitheatre audiences

STIFF GINS AT THE HAVEN 3pm Sunday 21st October 2001

The Haven has recently received a grant from Willoughby Council to produce an exciting cultural event, comprising both traditional and contemporary indigenous artists as part of this year's Willoughby City Spring Festival.

It will be a fabulous family event with the Tribal Warriors, an Aboriginal Dance Troupe performing dances that tell stories

and have been handed down for many generations. Headlining will be The Stiff Gins, a trio of young talented Aboriginal singers and musicians who are presently wowing international audiences and who will release a new CD in September. They will fill the Haven's tree-ferned gully with their beautiful harmonies and lyrics.

There will be Bush Tucker, and more.

From 2pm a special shuttle bus to transport patrons will operate continuously from outside Graham's Butchers in Edinburgh Road. There is no parking at the theatre.

WET WEATHER ALTERNATE DATE
Sunday 28th October

Lindy Batterham

Local News

At the **Annual General Meeting** of the Progress Association on 3 June, **Kate Westoby** was elected as President for 2001. A profile of Kate is provided on page 3.

Retiring President, Bob McKillop, reflecting on the past year, saw a positive progression toward a more inclusive and constructive approach to the issues that bind us together as a community: our responsibilities to the wider community, the environment and future generations. He believes there is a growing recognition of our responsibilities to maintain the quality of life which has attracted us to live in Castlecrag.

Bob then offered special thanks to Andrew Kirk and Kate Westoby, for their effort in organising outstandingly successful *Community Fairs* in 2000 and again on 27 May this year. Special thanks were given also to all Committee members who worked so hard to make the Fair a success, and to Andrew Frazer, our honorary auditor. >>>

Vale Madge Milston

Madge Milston, a long time resident of Castlecrag, passed away in May. Madge and her husband Neville came to live in Castlecrag in 1950 when it was still very much a bush suburb and the population was much smaller than it is now.

Madge was an active community member of the Castlecrag Kindergarten, the Castlecrag Infants School and the Willoughby Primary School and was a prominent member of the North Sydney Boys' and North Sydney Girls' High Schools committees over a period of 20 years. In the 1950s, Madge volunteered to be Scripture teacher for the Jewish children

Coles Express and **Castlecrag Cellars** were our main sponsors at the Fair this year, with the great majority of local businesses also getting behind the event. The **financial results** from the 2001 Community Fair are as follows:

RECEIPTS	
Sponsorship	\$2450
Auction income	\$1682
EXPENSES	\$2184.80
BALANCE	\$1957.20

With the 2000 surplus of \$617.28, the funds now in the Community Fair account total \$2574.48. The Committee recommends that this amount be retained as a security against the risk of losses at future Fairs, but we welcome your input on this matter.

at our local school while the regular teacher went on a holiday and then served in this capacity for almost 20 years, teaching not only Jewish children, but on request a number of children from other faiths!

During World War II, Madge served in the Australian Army Medical Women's Service, largely with the 2/1 Australian General Hospital AIF in New Guinea. She was a foundation member of the Women's Service sub-branch of the RSL, a trustee of that branch and for many years took part in the Anzac Day march through Sydney.

Local Area Traffic Management

Willoughby Council has provided the following update on the Edinburgh Road and Sunnyside Crescent Local Area Traffic Management (LATM) study. The study was carried out in 1998 and a public meeting was held on 4 March 1999 to discuss the recommendations. There are 19 specific works recommended to improve traffic flow and safety in Castlecrag. The draft LATM study was placed on public exhibition in April-May 1999 and 14 submissions were received.

After two years of inaction, Council has now advised that funds are available for construction in the 2001-2002 financial year. However, this is subject to approvals and consultation re design and location. Consultation with immediately affected residents is scheduled to occur in October-December 2001. The LATM plan would then be submitted to the Traffic Committee for consideration in February 2002.

Originally trained as a ticket writer, Madge used these skills at school fetes for many years. She took up weaving, spinning, knitting and similar crafts with enthusiasm and taught at the Chatswood Evening College and the Douglas Street Centre. She also travelled to various NSW country towns as a guest speaker to local weaving and spinning groups.

Madge was a proud and loving mother to Michael, Richard and Leah and grandmother to their children. Her much-loved foster children, Eva and Adam, were also part of her closely-knit family.

momo INTERIORS

79 EDINBURGH ROAD, CASTLECRAG
COLOUR AND DESIGN CONSULTANTS
INTERIOR & EXTERIOR

Member of the Design Institute of Australia

Tel. 9958 6672

FAX 9958 2465

Richardson & Wrench

Castlecrag 9958 1200

81 Edinburgh Road, Castlecrag, 2068

YOUR PREMIER AGENT

Castlecrag — Middle Cove — Castle Cove

Are you interested to know

- How much your property is worth?
- How long it would take to sell?
- How much would it cost?
- Is there market demand for your property?

If so, contact our office today for Real Estate advice from agents who really know your area and get results.

IT COSTS NO MORE FOR THE BEST

Providing excellence in Real Estate Service

Combined over 20 years Real Estate experience

Mark O'Brien — Manager

John Gallagher — Licensed Agent & Auctioneer

The Griffin Conservation Area - the issue of fences

Fencing has been a talking point in Castlecrag from time to time. Some claim that changing community values are generating a need for secure fencing around their properties. But for those living within the Griffin Estate, there is a wider public interest in the conservation of our suburb's remarkable heritage. Walter Burley Griffin stated that 'People spend a lifetime trying to get a large piece of land, put a house on it, and plant it like a park. Few can afford to reach their goal. What I want is to give everyone a chance to attain such a dream. I want Castlecrag to be built so that each individual can feel that the whole landscape is his. No fences, no boundaries, no red roofs to spoil the Australian landscape; these are some of the features that will distinguish Castlecrag.' (Birrell, 1964; Leslie, 1988).

The Griffins' ideal was to develop a suburb in which structures were kept subservient

to the landscape, where landscape qualities were preserved, and retention of a cover of indigenous trees kept the natural environment dominant. This was to give a continuous landscape even for small and quite humble blocks bordering the reserves, walkways, and foreshore reserves. The Griffins intended that fencing also should be subservient to the landscape, with the community sharing the landscape, with discreet overlooking, ensuring a democratic and open relationship between public and private property. These formed part of the Griffin covenants for Castlecrag.

The preservation and maintenance of the Griffin legacy in the Griffin Estate has been of central concern to local residents, and this has been supported by the Castlecrag Progress Association since its formation in 1925. There has generally been strong support for protecting the heritage signifi-

icance of the Griffin Estate, including its network of pathways, reserves and foreshore reserves. This includes the concept of fences not impacting on the landscape of the Griffin Estate and its natural character, right down to the foreshores.

Fencing guidelines for the Castlecrag Conservation Area are spelt out in Council's current Heritage & Conservation DCP19. The Progress Association is keen to hear your views on the effectiveness of these guidelines in ensuring that any fencing in Castlecrag, particularly in the Griffin Conservation Area, is sympathetic to and protects the Griffin heritage. Please come along to the Progress Association meeting on 28 August and offer your suggestions on Council's fencing policy.

Editors

CASTLECRAG MEATS

- Award Winning Butchers -

Specialists in trim lamb cuts, hams, turkeys
and all your special requirements
Free home delivery

Tuesdays & Fridays

Corner Raeburn Avenue and Edinburgh Road

ZEROPEST

Pest Management Systems.

DAVID HOWELL
9967 5000

ZEROPEST PTY LTD. 99 THE BULWARK, CASTLECRAG NSW 2068
Fax: (02) 9958 5736 P.C.REG 1456

Join the Progress Association

There are many issues affecting our suburb that need the support and involvement of residents

Membership is only \$10 per annum
(\$5 students and fixed incomes)

Name: _____

Signature: _____

Address: _____

Donation: \$ _____

Send to the Treasurer, Castlecrag Progress Assoc. Inc.,
6/77 Edinburgh Road, Castlecrag 2068
or hand in at the Newsagency.

Moran Realty



The Professionals

SALES RENTALS MANAGEMENT

- Professional advice
- Excellent Results
- Local residents for over 35 years
- call David, Jim, Joanne, Vince, John

9958-0124

Your local Neighbourhood Watch sponsors

100 EDINBURGH RD CASTLECRAG