

TRAMP

NEWSLETTER OF THE CASTLECrag PROGRESS ASSOCIATION

NO. 49

LSSN 0814-2054

NOVEMBER/DECEMBER, 1986

Dear Residents,

On behalf of the Committee of the Castlecrag Progress Association I wish the Families of Castlecrag "A VERY HAPPY AND SAFE CHRISTMAS AND NEW YEAR".

Over the last few months some special people have left Castlecrag and moved to new suburbs. I would like to comment on them.

Di Street has been deeply involved in community activities since she came to live in Castlecrag, firstly with the Castlecrag Infants School and later with the Progress Association and the Conservation Society. In 1977 our Association unanimously supported her nomination as an Alderman on Willoughby Council, a post in which she worked very hard for the Municipality. She was also President of the Association for two years and, amongst other things was responsible for the setting up of Neighbourhood Watch in our area.

Addie and John Lee have also been very supportive of the Progress Association for many years and John has held the position of both President and Secretary of the Conservation Society. Their great love has been the setting of native plants in our suburb, and their knowledge in this field has been of great help to us all.

Di, Addie and John, we miss seeing your cheery faces around Castlecrag and we wish you many happy times in your new homes.

Another leading member of our community who is leaving Castlecrag after 7 years of teaching our children is Miss Alison Whittle, Headmistress of Castlecrag Infants' School. Alison has accepted a promotion to Eastwood Primary School as Deputy Headmistress and as Headmistress of the Infants' Department. We wish Alison every success in her new teaching career and thank her for all she has done here for our children.

All Families are invited to attend Alison's farewell picnic luncheon on Saturday, 13th December at 12.00 in the school grounds. Please bring your own picnic lunch and drinks. For further information, contact Vanessa Francis 958-5531 or Peggie Wall, 958-4058.



HAPPY CHRISTMAS
TO YOU ALL
FROM ANN AND
RITA (EDITORS)

THE NEXT MEETING OF THE PROGRESS ASSOCIATION WILL BE HELD AT THE COMMUNITY CENTRE, THE POSTERN, ON TUESDAY, 23RD FEBRUARY, 1987.

THE CONSERVATION SOCIETY WILL HOLD ITS NEXT MEETING ON 6TH MARCH, 1987.

ALL RESIDENTS ARE WELCOME TO BOTH MEETINGS.

The Gore Hill Freeway. I advised the Progress Association that a Public Meeting was to be held by Council on 20th November to view the Department of Main Roads Exhibition of their proposed plans for the Gore Hill extension of the Warringah Freeway and of the Environmental Impact Statement (E.I.S.) relating to this. Such an exhibition and consideration of the public responses is now mandatory before any development can proceed.

The meeting went ahead as planned, unfortunately the D.M.R. had not completed the E.I.S. and showed only an earlier road proposal and a large marked-up photograph. They did, however, send three of their engineers to the meeting, including Mr. Ray Brown, Assistant Divisional Engineer. The lack of visual information provided was disappointing, however, the D.M.R. anticipated that the E.I.S. will be on Exhibition at Willoughby Library through December and January. Hopefully the exhibited plans will incorporate some of the suggestions made by residents at the meeting.

It is an obvious fact that Freeways cannot be constructed through inner ring suburbs without loss of housing stock and amenity. One must consider the balance between the benefits on one hand and the cost and losses on the other. Those residents of Castlecrag who were threatened with eviction from their homes in 1974 will have sympathy with the struggle by those in Naremburn and Artarmon now. The proposal is intended to reduce the impact of commuter traffic generated by suburbs to the north and west of Willoughby, particularly in peak hours. The present unsatisfactory termination of the Freeway at Willoughby Road results in extreme peak period congestion, in the limited capacity feeder streets and diversion of traffic into local residential areas.

To the extent that the new road will alleviate the above congestion, it will be an advantage to our Municipality, even though the cause is not of our own making, however, if the road is constructed as shown in the preliminary plans I consider it will be deficient in several respects. It will demolish the local shopping centre at Willoughby Road, where the Freeway presently terminates. This is not so with an earlier proposal now rejected by the D.M.R. These shops are a valuable amenity to many residents in Naremburn. The nearest alternative areas are Frenchs Road or Crows Nest, both of which are difficult to approach by car or public transport.

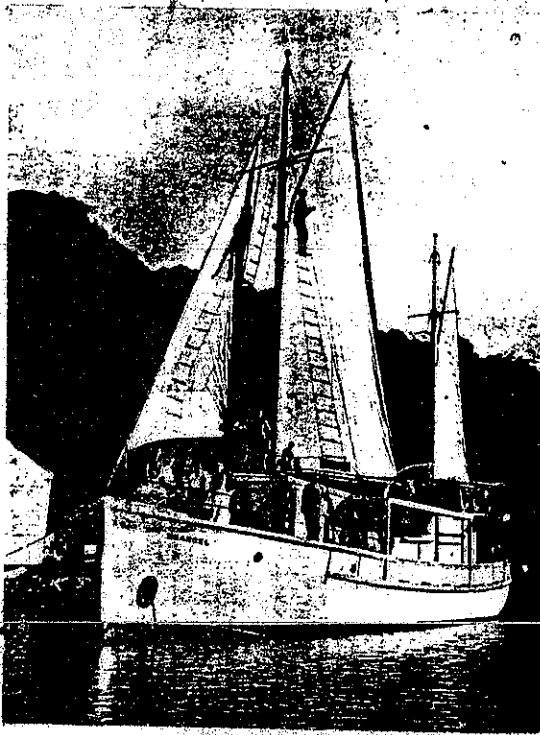
No on and off ramps are proposed between Willoughby Road and Pacific Highway. This appears to defeat one of the main purposes, namely to keep heavy vehicles from residential streets by providing direct access from the Freeway to the Artarmon Industrial areas.

No provision is proposed at Willoughby Road to permit vehicles joining the freeway and travelling westward. This means in effect that Willoughby residents who wish to travel westwards on a major freeway passing through their own Municipality, which takes much of their land and rateable property must first travel to Falcom Street, North Sydney. This is not good enough.

One final observation. This freeway, like all freeways, will effectively divide the communities through which it passes. It was not clear at the meeting just how many crossings are to be provided. A note on the plan showed the freeway as "in structure" (i.e. supported above ground) from Willoughby Road to where it crosses the N.S. railway line. This should provide the opportunity for a number of pedestrian and vehicle crossings. Bearing in mind that Willoughby has an ageing population it is important that as many north south links as possible be established to protect the existing amenity of the area. No mention was made at the meeting of any intention in the future to extend the freeway towards Warringah, this will please our Castlecrag residents. Nor was any discussion given to a link road connecting Willoughby Road to Eastern Valley Way.

I urge our residents to inspect and study the plans and make comments on them. My sincere wishes to you all for a Merry Christmas and Happy 1987.

SOUTH SEA EVANGELICAL MISSION



One of the oldest buildings in our Municipality is a small stone cottage on the foreshores of Castlecrag's northern escarpment. This was connected with Horseley Commercial Boat Shed which is reputed to have been well established in 1900. The Metropolitan Water & Sewerage Board refers to it as existing long before 1902 when they inspected Sugarloaf Bay. The word "Horseley" is inscribed on the stone wall nearby. We have a photo of the boatshed where ship building appears to have been carried out, but apart from that, we have very little information. Council does not seem to have records of these early buildings.

Though we can't say just what work was carried out here in the early days, we do have information on a sailing ship that was built here in 1946. The South Sea Evangelical Mission had had two previous ships built in Australia, one in 1907, the other in 1915, both to work around the Solomon Islands.

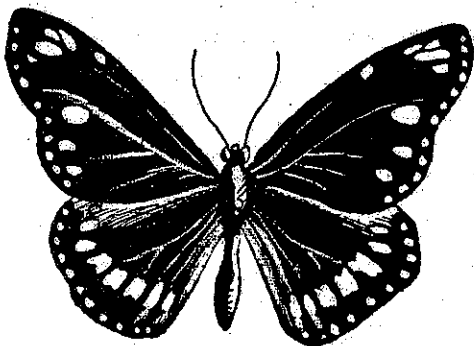
In 1946, when a new vessel was needed, a crew of 10 Solomon Islanders from various mission stations, came to Australia to stand by whilst the ship was

fitted out and to sail it home. A new hull was bought in Balmain and taken to North Sydney to do the work, but when this venue proved unsatisfactory Mr. Sinclair who now owned and lived in the cottage and had previous contact with mission work, offered the boatshed as a workshop and accommodation for the crew. From October 1946 to June 1947, the Solomon Islanders lived and worked on our bay and became a common sight as they walked up and down Edinburgh Rd. to the shops, sometimes with flowers in their ears. Often at night their voices could be heard over the water, as they sang their traditional songs or hymns. They seem to have enjoyed living in Castlecrag and building their ship.

We recently had contact with Mrs. Sinclair and her daughters and were given photos of the ship and an article printed by the Mission in 1947. This included information on the crew; they had become Christians, had had some formal education and a number of them had taught in mission schools.

To save money a lot of the work was done by the crew with help from friends and skilled tradesmen at the weekends. The ship was finally dedicated on Saturday, 3rd May, 1947 at Palmers Pleasure Grounds, just along from Willis' Castle, with a crowd of about 600 packed in the around the large shelter shed that was burnt out some years ago.

Oleander Butterfly
(common Aust. crow)



Jim Young Real Estate

THE QUADRANGLE

100 EDINBURGH ROAD • CASTLECRAG • 2068

If you wish to buy or sell a home, contact Jim Young for courteous and genuine service, backed by over 30 years' personal experience in these lovely areas.

GENUINE BUYERS NOW WAITING

TELEPHONE: 95-0124

After Hours contact:

Jim Young, 9 Minnamurra Rd., Northbridge. Phone: 95-1894

CASTLECRAG LIBRARY - NEW BOOK LIST

SHELDON, S.
STUART LONG, W.
BRADFORD TAYLOR, B.
HOLT, V.
KYLE, Duncan
WALKER, Alice
DE MILLE, N.
MORTIMER, J.
FRANCIS, Dick
HIGGINS, Jack
STELLE, D.
COWIE, Vera
BARBER, Noel
AMIS, K.
LUSTBADER, E. van, and others, plus mysteries and paperbacks.

STRANGER IN A MIRROR
THE PATRIOTS
ACT OF WILL
SECRET FOR NIGHTINGALE
KINGS COMMISSAIR
COLOUR PURPLE, The
TALBOT ODYSSEY
PARADISE POSTPONED
BOLT
NIGHT OF THE FOX
WANDERLUST
FORTUNES
OTHER SIDE OF PARADISE

PLEASE NOTE THAT THE LIBRARY WILL BE CLOSED FROM WEDNESDAY, 24TH DECEMBER UNTIL SATURDAY 3RD JANUARY, 1987 WHEN IT REOPENS.

THE CRAG is edited on behalf of
THE CASTLECRAG PROGRESS ASSOCIATION
by Rita Kaye & Ann Korner.
(phone 95 6146 or 95 6059)
Queries or idea's welcome.

CASTLECRAG MEATS

CNR RAEBURN AVENUE & EDINBURGH ROAD

TEL. 95-4274

- * EXCELLENT SERVICE *
- * TOP QUALITY MEATS *
- * Bulk meat packed to your requirements! *

+ Phone Orders 95-4274 +

FREE HOME DELIVERIES
TUESDAYS & SATURDAYS



The Police report that vehicles in the shopping centre carpark are still under attack; 5 vehicles were broken into and property stolen during November.

In October a shop and a house in Edinburgh Road were entered and items stolen, as well as one in The Bulwark.

We now have 31 co-ordinators to assist in NEIGHBOURHOOD WATCH activities, but we still need more MEMBERS! And those of you who haven't yet done so - GET THOSE PLAQUES UP.... PLEASE.

A PHONE CALL TO 95 6963..... WILL MAKE YOU AN INSTANT MEMBER.

Northbridge Women's Bowling Club

WARNER PARK, THE OUTPOST, NORTHBRIDGE • TELEPHONE: 95-6322



NEW OR EXPERIENCED BOWLERS come and join in the Bowling and social activities of our happy and relaxed club - set amid beautiful surroundings away from traffic noise.

FREE TUITION from a qualified Coach - shoes and bowls supplied. Also, we have size 3 - 4 Bowls for sale.

ART CLASSES - SOLO - BRIDGE & MAH JONGG

FURTHER ENQUIRIES: CLUB 95 6322 AFTER HOURS 958 3480

CAROLS BY CANDELIGHT

AN INVITATION TO ALL RESIDENTS

Mark Howarth, Minister of the Willoughby Presbyterian Church, has again agreed to organise Carols by Candlelight, in conjunction with other churches in the area. This will be held at the Haven Theatre.

No parking is available at the Theatre, but free buses will leave the Castlecrag Shopping Centre every few minutes after 6.30 p.m. and return after the function. All residents who live nearby are asked to walk. Should it be wet, the venue will be The Community Centre, the Postern.

DATE & TIME: Saturday, 20th December, 7.00 p.m.

PLACE: Haven Theatre, corner of The Scarp and The Barricade.

Bring a candle, a cushion and a rug, and a torch. Singing will be accompanied by an organ.

This should be a very pleasant evening and we hope you will all join us.

CASTLECRAG BUSH DANCE!

COMMITTEE



A group of young people, keen for another of our famous Castlecrag Bush Dances, has come forward and offered to help in the organisation. The date, 7th February, 1987 has been decided upon and the Bush Band has been booked. The dancing will take place in the Community Hall and Willoughby Council have agreed to loan us a tent where the meal can be served in case of rain. We have planned barbeque sausages and salad, so it look as though everything is just about organised, and all we need now is for you all to come along and join in the fun.

We intend to make it a "REAL FAMILY AFFAIR" so we urge that you don't leave the children with babysitters, but bring them along with you.

KEEP THE DATE FREE, IN FACT, BOOK IT NOW!

FEBRUARY 7TH 1987 - 7.00 P.M. - 11.00 P.M.

A THANK YOU TO OUR ADVERTISERS!

On behalf of our Association, and of our residents, we would like to thank those shopkeepers who have supported us by advertising in The Crag, and thus helping make the printing of our newsletter possible. This has proved a very popular newsheet, and from feedback, we feel it is well read in our suburb.

We also urge our residents to shop locally, and support our own shopping centre.



PATON & ASSOCIATES PTY. LTD.
REAL ESTATE AGENTS & MARKETING CONSULTANTS
MEMBER OF THE HOMESEEKERS GROUP

TERRY LAMBERT

Proprietor
A.H. 411 2284

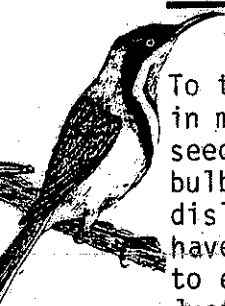
81 EDINBURGH ROAD, CASTLECRAG

958 1200

NIGEL'S QUALITY MEATS

Griffin Centre
120 Edinburgh Rd. Castlecrag
Phone 95 0065

For
top quality & friendly service



To the dedicated gardener onion weed is anathema. It can be seen flourishing in many gardens in Castlecrag and Willoughby. It proliferates by very fine seed when the seed pods from the white flowers ripen and break open. Small bulbs also form each year around the base of the mother plant and are easily dislodged whenever any attempt is made to pull or dig the plant out. If you have a bad infestation of onion weed the best way to be rid of this scourge is to excavate the whole area and cart to the tip, replacing with garden soil. Just recently a type of mat has become available which is placed over the infestation, which when denied sunlight and overhead moisture dies in time (per Valerie Swain in a recent 2BL talk back radio programme). Poisons are available if you prefer, Zero and Roundup being advocated by the Department of Agriculture Home Garden Section.

For onion weed growing in garden edges, between cracks in concrete, foot paving etc., rockeries and difficult places to get at, the use of kerosene can be recommended. Pick a warm to hot dry day and using an old tea pot with a good spout trickle the kerosene into the cracks till they fill, wait for it to seep down and apply again. The theory is that not only is the kerosene toxic but also being greasy, it isolates the weed from moisture. Where onion weed is growing in the garden where you do not feel inclined to pour kerosene round the plant, try painting the leaves with a small brush, say, 1/2 inch (12mm) on a hot day. The kerosene is absorbed by the leaves thus destroying the chlorophyll.

The treatment of a mother plant with kerosene may not kill the many bulbets attached at the base and they shoot with great profusion. Use the kerosene treatment again and a high percentage kill should result.

For isolated onion weed plants in a lawn, carefully dig around the plant to about an inch (2 1/2 cm) and pour the kerosene down the side of the stem slowly allowing it to sink into the dry earth. A small patch of grass may die but will grow again quickly.

Protect our environment by destroying as much onion weed as possible, at least pick off the flower heads before the seed is formed and prevent further infestation. Please do not throw any soil containing onion weed or loose plants and bulbs onto parks, reserves or vacant land - use the tip or for small quantities put in a supermarket plastic bag, tie at the top and put in your garbage tin.

(The Progress Association cannot accept responsibility for the information in this article which has been contributed by a Member in good faith. If you decide to use the kerosene method, try it experimentally on just a few plants in a crack or crevice and await results. Please let us know how effective you find it. Ed.)

CASTLECRAG COMMUNITY LIBRARY

CASTLECRAG CELLARS

122 EDINBURGH ROAD, CASTLECRAG PHONE 95 2682 or 958 1507

DISCOUNT WINES BEERS & SPIRITS

WE WISH YOU ALL A HAPPY XMAS & NEW YEAR.

S T O P P R E S S

CAROLS BY CANDLELIGHT (IN THE PARK) CHANGE OF VENUE

- * Unfortunately the recent heavy rains have made the stage at Haven Theatre unsafe because of erosion of the footings.
- * This has required us to alter the venue for the carol singing.
- * The function will go on as planned, but will be held at the park at 229 EDINBURGH ROAD (the park with the children's play equipment).
- * Parking at this time could still be difficult so the free bus will leave from the Castlecrag Shops (where there is parking) every few minutes after 6.30 and return after the function.
- * Should it be wet, it will be held at the Community Centre, the Postern.
- * Please bring a candle, a folding chair or cushion and a rug.

DATE AND TIME: SATURDAY, 20th DECEMBER, 1986 7.00 PM

MARION BURLEY GRIFFIN'S UNPUBLISHED BOOK

- * Mr John Flint of Willoughby Municipal Library has advised us that he has just received on loan a copy of the microfilm of this book. It can be viewed on the library microfilm reader until the end of January 1987. Mr Flint has perused this and confirms Miss Riley's enthusiasm.