

# NEWSLETTER

## NEWSLETTER OF THE CASTLECrag PROGRESS ASSOCIATION

NO. 46.

ISSN 0814-2054.

MAY JUNE 1986.

### PRESIDENT'S REPORT

Dear Residents,

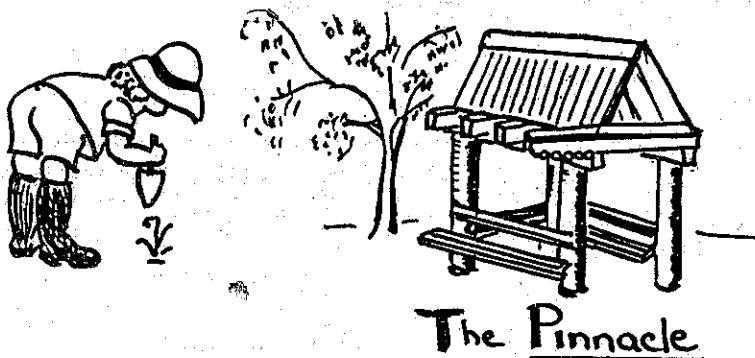
On Sunday, 26th May, the official opening of The Pinnacle Bus Shelter took place with a planting of The Pinnacle garden by families of Castlecrag. It was a well attended function and much "catching up" of old friends like Phil and Michael Stoker and the Lees took place.

I would like to thank the children (and their families) who planted the native garden around the shelter, the members of the Committee and Jenny Kerr, Bev. Blacklock, Joanne Penglase and Tony Taussig who helped to make this morning such a success.

On a more serious note I would like to mention that the Committee has received a number of letters from mothers of young children regarding cars speeding in The Bulwark, The Scarp, and The Bastion. These winding narrow roads can be quite dangerous when drivers travel at unreasonable speeds. It is the responsibility of every driver to see that our children come to no harm through carelessness or recklessness. Drive carefully at all times PLEASE. THE LIVES OF OUR CHILDREN ARE IN YOUR HANDS!

Our Traffic Committee is to meet on Wednesday, 11th June, at 16 The Bulwark to discuss this and other road safety matters. The committee is as follows:- Ted Bowen, Dorothy Fraser, Bob Hawke, E. Kaye, Joanne Penglase, Sue Randle J. Steel and Ken Thomas.

Sue Randle (95 6344)



THE NEXT MEETING OF THE PROGRESS ASSOCIATION WILL BE HELD AT THE COMMUNITY CENTRE

THE POSTERN, ON TUESDAY, 24TH JUNE,  
8.00 P.M.

THE CONSERVATION SOCIETY WILL HOLD  
ITS NEXT MEETING ON 4TH JULY, 8.00 P.M.  
AT 70 THE BULWARK.

At this time each year Council considers its Bushfire Hazard Reduction policy. Many of our residents living close to Open Space Bushland will I am sure, remember the bitter debate which raged in past years on the pros and cons of slow burning combustible material in the bush during the winter, to reduce the risk of fire in the summer. The approved work this year, for the Northern Escarpment of Castlecrag is as follows:  
 "to continue with the staged regeneration of the areas commenced in 1985".  
 This comprises (a) control of the bamboo from spreading down the escarpment on Council controlled property

(b) burning by the Board of Fire Commissioners of the heaped bamboo from last year and

(c) issuing Section 13 domestic clean up notices on residents on adjoining properties where there is a risk of fire.

It would seem opportune to briefly review the background to Council's present policy on Fire Hazard Reduction. Following the severe fires in late 1970's considerable pressure was brought to bear on Council by some residents living in, or near, large bushland areas, to request the Board of Fire Commissioners to carry out an extensive slow burning programme during the winter. This was supported by the Board, however experience showed that this was difficult to achieve. On the other hand Conservationists and our Progress Association considered slow burning to be ruinous to the environment, counter productive and after a few years would encourage the growth of alternative species more flammable than indigenous growth, thus increasing the bushfire risk. Faced with these conflicting views, Council set up a committee to investigate the matter. All three Middle Harbour Aldermen were members of this committee, which recommended that professional consultants be engaged to document a Plan of Management for our Bushland Reserves and carry out a fire hazard risk assessment. The successful consultants were Allan Fox & Assoc., a company with wide experience in the management of National Parks. The report was published in 1984 and has since been adopted by Council as its current policy.

This year the same firm has been engaged to provide specialist input of tasks being undertaken by our Parks Controller. At both the 1985 Annual Hazard Reduction Meetings between the Board of Fire Commissioners and Council officers, Mr. Fox and a member of his staff attended to provide professional advice on these matters. By this iterative approach to a matter Council has achieved, what I consider to be a reasonable compromise between competing interests.

### "A FAMILY PROM CONCERT"

WILLOUGHBY SYMPHONY ORCHESTRA combined with A.B.C. SINFONIA.

Let your family discover the joyous world of fine music at the Concert Hall, Civic Centre, Chatswood on Sunday Afternoon 13th July, 2.30 p.m.  
 A concert for all ages, including a "Walk through the Orchestra".  
 Family ticket from \$8. Single from \$3. Extra child \$1.  
 Art competition for school children - Draw an Orchestral Musical Instrument.  
 Bookings. Ph. 412 4838.

## NIGEL'S QUALITY MEATS

Griffin Centre  
 120 Edinburgh Rd. Castlecrag  
 Phone 95 0065

For  
 top quality & friendly service



**PATON & ASSOCIATES PTY. LTD.**  
 REAL ESTATE AGENTS & MARKETING CONSULTANTS  
 MEMBER OF THE HOMESEKERS GROUP

TERRY LAMBERT  
 A.H. 411 2284

## THE PINNACLE.

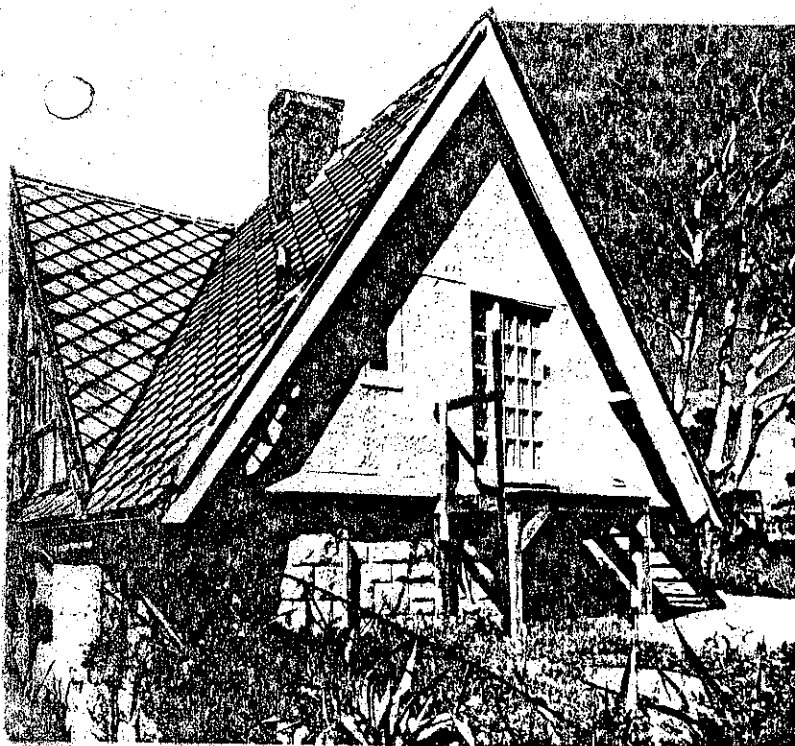
The Committee.

We thought you might like to know something about "The Pinnacle", the name given to our new bus shelter opened on Sunday, 25th May. What information we have been able to glean on this has been obtained from Addie Saltis, Bim Hilder and Michael Stoker. If anyone has any more to offer, we would be pleased to hear from you.

The name "The Pinnacle" was given to a sandstone house, which, until the 1950's stood at the eastern end of Edinburgh Road, at a point where the road takes a sharp steep bend down to Middle Harbour. The walls of this house were built early this century, either as a stable and hay loft or as a garage and "man's room" for a much larger home planned but never constructed. In the 1920's Walter Burley Griffin extensively modified the original building, adding a high pitched roof covered with cliplock tiles (a Griffin invention) and including a second floor in the roof. It is most likely that the name "The Pinnacle" was given to the house by Burley Griffin and the area at the top of the cobble stone hill where it stood, took this name. The site offered extensive views to Seaforth, The Spit and the Ocean and the walk along Edinburgh Road, then a winding dirt track was a very popular one. It is worth noting that one of the schemes which the residents adopted during the 1940's to raise money for the construction of our present Community Centre was to serve afternoon teas at this spot during the weekends. The house has now been demolished, but a photo of it is included in the book "Castlecrag" published by our community.

When looking for a name for our bus shelter, we felt it appropriate to call it "The Pinnacle" and so preserve this historical association.

*Right: The Pinnacle House, old stables remodelled by Griffin and since demolished. (Knitlock roof tiles)*



## **CASTLECRAG MEATS**

CNR RAEBURN AVENUE & EDINBURGH ROAD

TEL. 95-4274

- \* EXCELLENT SERVICE \*
- \* TOP QUALITY MEATS \*
- \* Bulk meat packed to your requirements! \*

+ Phone Orders 95-4274 +

**FREE HOME DELIVERIES**  
TUESDAYS & SATURDAYS

Castlecrag has a large number of past and present residents who have been seriously involved in some particular art form. In our issue of The Crag dated July 1985 I asked for help in compiling a list of these people. I received 56 names, mostly from Bim Hilder, a lifetime resident of Castlecrag and well known for his paintings and sculptures.

Booklets on the history of each suburb of Willoughby are now being prepared for the Bicentenary, on behalf of Willoughby Council. I am endeavouring to get particulars on all our artists for Castlecrag's own historical records, and for the Bicentenary booklets. I would be glad of anything, from a few details to a curriculum vitae, from anyone whose name is on the following list. I also realise that there will be a number of people whom I have inadvertently missed, and would like to hear from anyone who feel their name, or that of some other artist, should be included. (Phone No. 95 6146).

MUSIC

Johnnie O'Keefe Singer & Arranger  
 Greg Foster Musician (Galapagos Duck)  
 Joe Parkes Early Instruments & Musician  
 Carmel Irish Singer

FILMS

Danny McLean T.V. Arranger  
 Sandra Levy T.V. Arranger  
 Howard Rubie Director  
 Eric Porter Animated Cartoons  
 Kim Hilder Art Director & Spec. Effects  
 Danny Batterham Camera Man  
 Peter Hopwood " "  
 Michael Twemlow " "  
 Peter Levy " "

ACTING

Betty Ainsworth Playwright  
 Lute Drummond Director  
 Rebecca Gilling T.V. Actor  
 Katrina Foster Theatre & Film  
 David Foster Actor & Radio Announcer.

PAINTERS

Victoria Baracci Painter  
 Bernard Hesling Painter, enamels, cartoons  
 Edmond Harvey Painter & Teacher of Art  
 Lorna Harvey Painter  
 W. Constable Ballet - Design & Painter  
 Roma Hopkinson Commercial Artist & Painter  
 Jess Hopwood " Art Director & Painter  
 Rob Guy Commercial Artist  
 Howard Adams Camouflage - Artist  
 Kathy McCarthur Painter  
 Stan Moriarty Painter, Silk Screen Artist  
 Edgar Shepherd Painter  
 Anna-Lisa Klettenburgh Landscape Artist

WRITERS

Betty Roland Playwright  
 John Gunn Childrens Books  
 Brett Hilder Author, Historian  
 Gwen Meridith Radio Writer  
 Blossom Ballantine Childrens Stories  
 Megan Machen Journalist  
 Tana Lambert "

PHOTOGRAPHY

Max Dupain - If any of the information here is incorrect, would you please phone me.

ARCHITECTS

Walter Burley Griffin  
 Marion Griffin  
 Hugh Buhrich  
 Eva Buhrich - Critic & Writer  
 Clive Buchrich  
 Val Valentine  
 Barry Kerr  
 Tony Taussig  
 Jenkins & McLurcan  
 Henry Pinor  
 Eric Nicholls  
 Glenn Nicholls  
 Chris Sorensen  
 Harold Smith  
 Robert Sheldon  
 John Brindley  
 Francis Maratea Architect & Painter.

SCULPTURE

Joan Brassil Sculptures-Video  
 Gay Evans " Stone & Ceramics  
 Anita Aarons Sculptor-Gallery Director  
 Bim Hilder Sculptor & Designer

TAPESTRY

Mrs Felstead  
 Pat Buckeridge

CERAMICS - POTTERY

Didy Harvey  
 Joan McPherson

DANCE

Louise Lightfoot Architect, Dancer, Teacher  
 Misha Burlicoff Dancer, Teacher

PATCHWORK - QUILTING

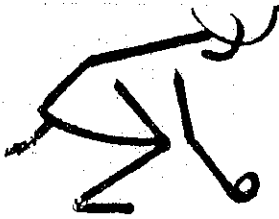
Elizabeth Burton.

# Northbridge Women's Bowling Club

WARNER PARK, THE OUTPOST, NORTHBRIDGE • TELEPHONE: 95-6322

SPECIAL ANNOUNCEMENT!

OPEN DAY SATURDAY, JUNE 28TH AT 1.00 P.M.



COME AND JOIN US! COME ALONE OR COME WITH A FRIEND AND SEE HOW THE GAME IS PLAYED \* SHOES AND BOWLS WILL BE SUPPLIED. LATER ON, STAY AND ENJOY AFTERNOON TEA WITH OUR SOCIAL AND BOWLING MEMBERS OF THIS VERY FRIENDLY, HAPPY CLUB. BESIDES BOWLING CLASSES, WE HOLD YOGA AND ART CLASSES. BRIDGE AND MAH-JONGG LESSONS ALSO AVAILABLE. FOR FURTHER INQUIRIES, PHONE 95 6322 OR 958 3480 AFTER HRS.

NEIGHBOURHOOD WATCH is .....

the most successful public relations exercise ever undertaken by the Police Force in association with the public. At a Symposium held early this year at the Sydney Opera House, it was revealed that robberies are down in all areas where this neighbourhood co-operative system exists. If you have a Neighbourhood Watch sign on your letterbox, chances are that any would-be intruder will go to a house without one... because your valuable possessions are marked for identification, which virtually precludes resale. JOIN NOW.....BEFORE YOU WISH YOU HAD! Phone 95 5753

SALVATION ARMY\* RED SHIELD APPEAL 1986 \*

Rita Kaye.



- \* WE NEED YOUR HELP ON SUNDAY, 6TH JULY TO TAKE PART IN THE CASTLECRAG COLLECTION FOR THE RED SHIELD APPEAL.
- \* MONEY TO ASSIST THE NEEDY OVER THE COMING WINTER MONTHS IS URGENTLY REQUIRED.
- \* WITHOUT YOUR HELP WE WILL NOT BE ABLE TO CALL ON ALL HOMES IN CASTLECRAG.
- \* THE WORK INVOLVED IS JUST TWO HOURS ON SUNDAY MORNING.
- \* IT IS NOT ONEROUS AS PEOPLE RECOGNISE AND ARE PREPARED TO SUPPORT THE FINE WORK DONE BY THE SALVATION ARMY.
- \* HELP US BEAT OUR LAST YEAR'S RECORD AND RAISE AN AMOUNT WE CAN FEEL JUSTLY PROUD OF.
- \* PHONE ME ON 95 6146 AND BE PART OF THE CASTLECRAG TEAM.



## Jim Young Real Estate

THE QUADRANGLE

100 EDINBURGH ROAD • CASTLECRAG • 2068

*If you wish to buy or sell a home, contact Jim Young for courteous and genuine service, backed by over 30 years' personal experience in these lovely areas.*

**GENUINE BUYERS NOW WAITING**

**TELEPHONE: 95-0124**

After Hours contact:

Jim Young, 9 Minnamurra Rd., Northbridge. Phone: 95-1894



I. FRASE

## THE EUROPEAN WASP.

Information from Dept. Agriculture pamphlet.



This is a drawing of a European wasp, actual size, an insect that, over the last few years, has been rapidly spreading over Victoria. It is now being found in New South Wales, and several weeks ago a nest was discovered and destroyed in a Castlecrag garden. It is about the same size as a bee, but is brilliant yellow with distinctive black V-shaped markings on the abdomen. The following is a list of particulars about the European wasp that will help you identify and cope with it, should it invade your garden.

European wasps live in large nests which are usually hidden in the ground, behind retaining walls, in trees or in buildings. The nest cells are covered in grey, papery, outer wrapping. Normally, you will only see the entrance hole.

They fly up to one kilometre from their nests in search of food. They are attracted to meat, sweet food and drink, so you will only see them around barbecues and picnics. At certain times of the year you may see them stripping wood from telegraph posts and fence posts for material to their nests. They are more aggressive than bees and will attack if nest is disturbed. Their sting is more painful than bees'.

Overseas people have died from European wasp stings. Those most at risk are people allergic to bee and wasp venom. Unlike a bee, they can sting more than once. There is no barb to remove and the wasp does not die after stinging. They may enter open drink cans. If you swallow a wasp it may sting you in the mouth or throat.

### WHAT TO DO.

Stings to the mouth and throat are especially painful and can be dangerous. **SEEK MEDICAL ADVICE IMMEDIATELY**

At other parts of the body, a sting will usually cause a fiery pain associated with a red mark and swelling. In most cases this will subside after several hours. Applying ice and water may help.

If you have a history of allergic reactions to bee or wasp stings, **SEEK MEDICAL ADVICE AS SOON AS POSSIBLE.** Take extra precautions at outdoor activities likely to attract wasps.

### WHAT IF YOU FIND A NEST

Only people experience in handling stinging insects should attempt to destroy a European wasp nest. If you believe you have found a nest, contact Willoughby Council, 412 3333 Mr. L. Cosgrove, Health and Building Department. **MORE INFORMATION OBTAINED FROM:- Dept. Agriculture, ph. 217 6666.**

# **CASTLECRAG CELLARS**

**122 EDINBURGH ROAD, CASTLECRAG PHONE 95 2682 or 958 1507**

## **DISCOUNT WINES BEERS & SPIRITS**